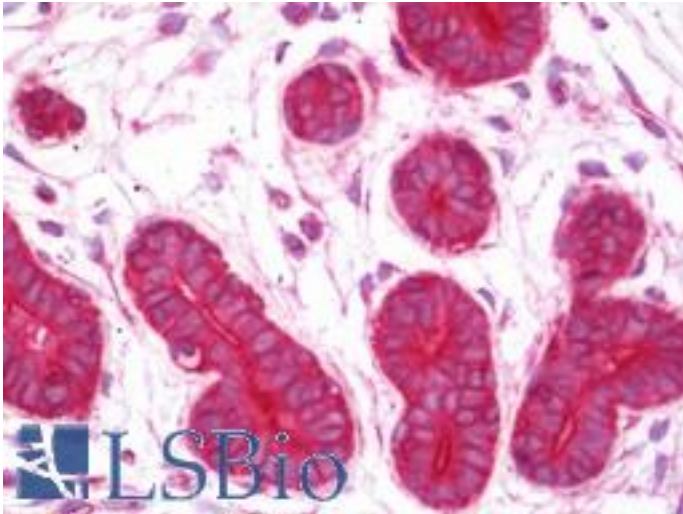


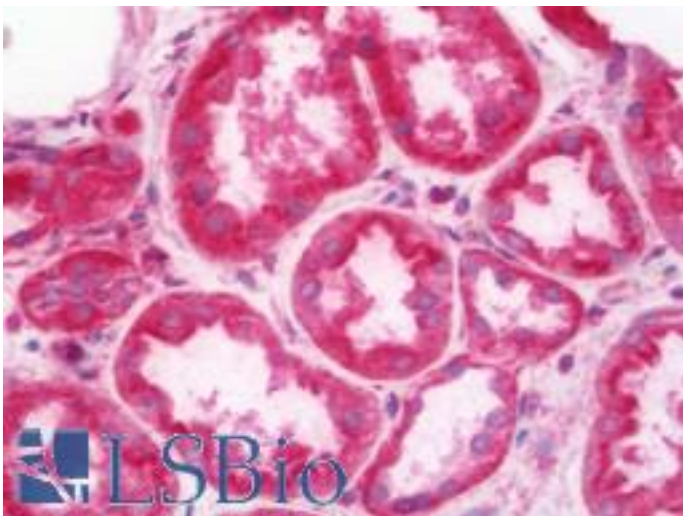
RALA / RAL Rabbit anti-Human Monoclonal (Internal) (EPR6468) Antibody - LS-B11112 - LSBio	
CatalogID:	LS-B11112
Validation:	This antibody replaces catalog number LS-C152267. It has been validated for use in the following assays: IHC-P.
Target:	v-ral simian leukemia viral oncogene homolog A (ras related) (RALA)
Synonyms:	RALA Antibody, RAL Antibody, RAS-like protein A Antibody, Ras-related protein Ral-A Antibody
Family / Subfamily:	Ras GTPase superfamily IPR001806 / not assigned-Ras GTPase superfamily IPR001806
Host	RALA antibody was produced in Rabbit
Clonality:	Monoclonal
Isotype:	IgG
Clone Name:	EPR6468
Immunogen Species:	RALA / RAL antibody was raised against Human
Antigen Type:	Synthetic peptide
Immunogen:	RALA / RAL antibody was raised against a synthetic peptide corresponding to residues in human RALA was used as an immunogen.
Specificity:	Human RALA.
Epitope:	Internal
Reactivity:	Human
Non-Reactivity:	Mouse, Rat
Purification:	Tissue culture supernatant
Presentation:	49% PBS, pH 7.2, 50% Glycerol, 0.05% BSA, 0.01% Sodium azide
Recommended Storage:	Store at -20°C.
Uses:	IHC - Paraffin (1:100 - 1:250), Western blot (1:1000 - 1:10000), Flow Cytometry (1:100 - 1:10000) (Optimal dilution to be determined by the researcher)
Size:	50 µl

Immunohistochemistry Image:



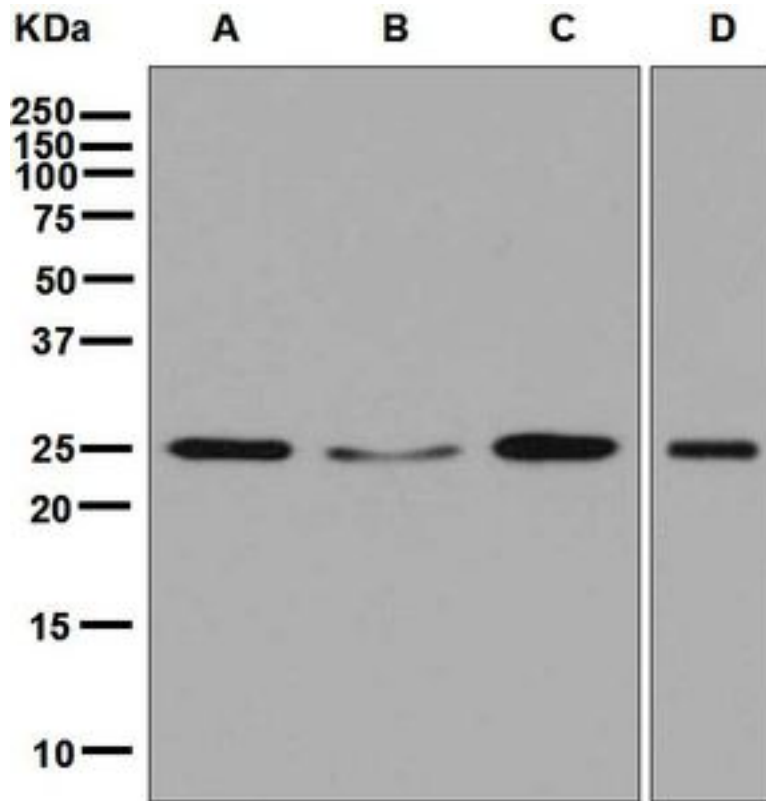
Human Breast: Formalin-Fixed, Paraffin-Embedded (FFPE)

Immunohistochemistry Image:



Human Kidney: Formalin-Fixed, Paraffin-Embedded (FFPE)

Western Blot Image:



Western blot analysis on (A) MCF-7, (B) Molt-4, (C) BxPC-3, and (D) HepG2 cell lysates using anti-RALA antibody at a 1:1000 dilution.

Requested From:

Japan

Laboratory Reagent For In Vitro Research Use Only

Not for resale without prior written consent from LifeSpan BioSciences, Inc.

Created on 9/23/2014

© 2014 LifeSpan BioSciences