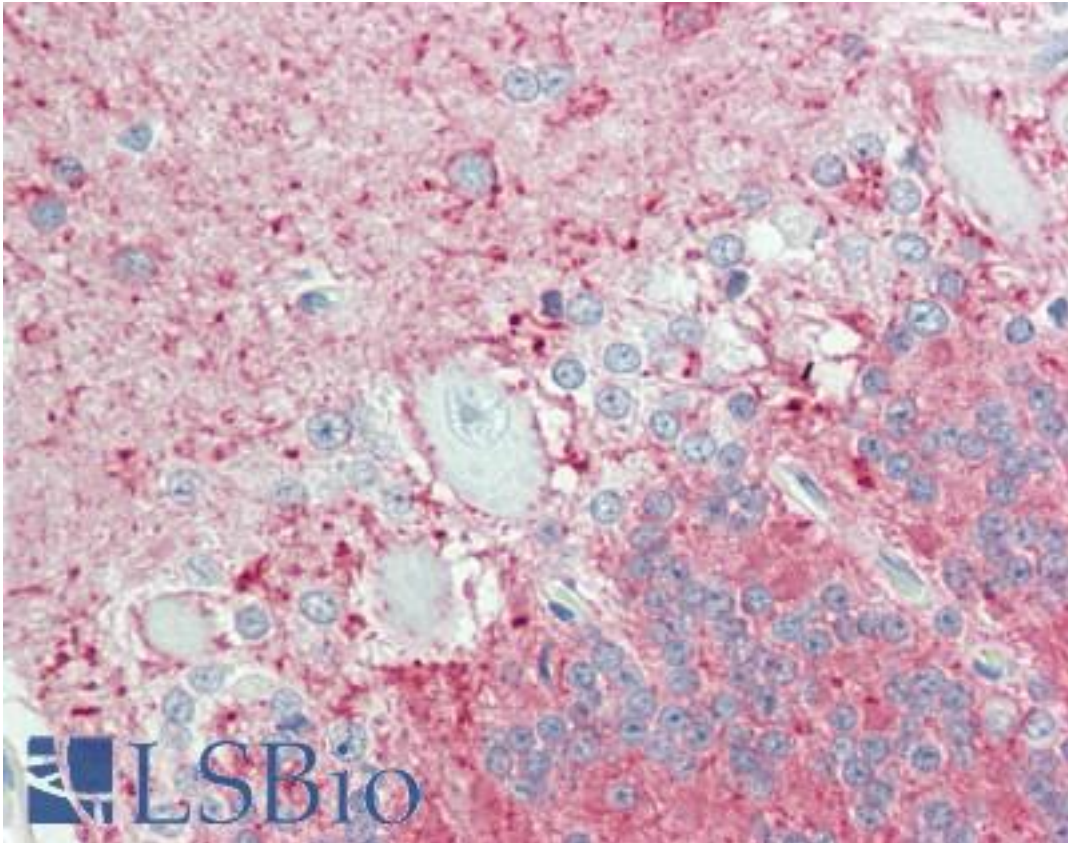


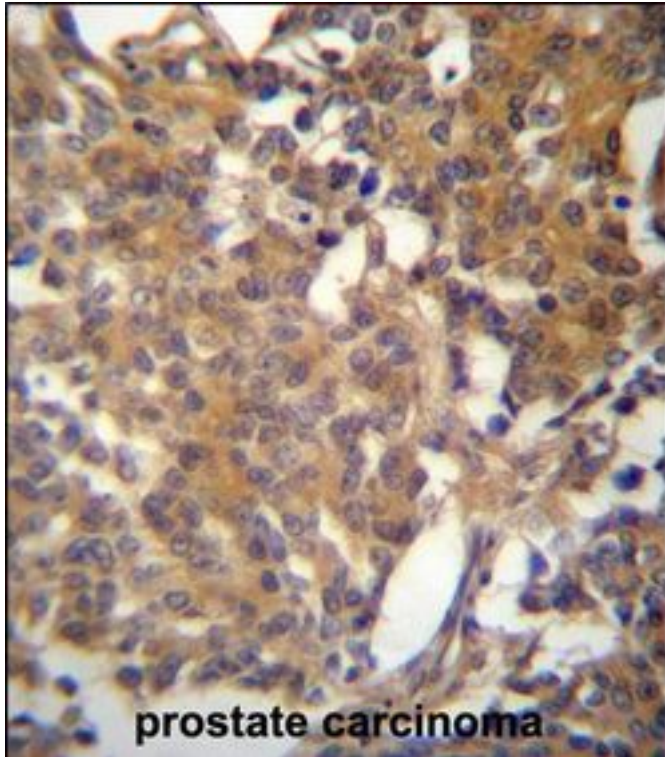
EDNRB / Endothelin B Receptor Rabbit anti-Human Polyclonal (aa409-439) Antibody - LS-B11100 - LSBio	
CatalogID:	LS-B11100
Validation:	This antibody replaces catalog number LS-C167628. It has been validated for use in the following assays: IHC-P.
Target:	endothelin receptor type B (EDNRB)
Synonyms:	EDNRB Antibody, ABCDS Antibody, Endothelin B receptor Antibody, Etb receptor Antibody, ET-B Antibody, Et-b receptor Antibody, Et-b-r Antibody, ET-RB Antibody, ETBR Antibody, ETRB Antibody, Etb-svr Antibody, WS4A Antibody, Endothelin receptor type B Antibody, ET-BR Antibody, ETB Antibody, HSCR Antibody, HSCR2 Antibody
Family / Subfamily:	GPCR / Endothelin
Host	EDNRB antibody was produced in Rabbit
Clonality:	Polyclonal
Immunogen Species:	EDNRB / Endothelin B Receptor antibody was raised against Human
Antigen Type:	Synthetic peptide
Immunogen:	EDNRB / Endothelin B Receptor antibody was raised against kLH-conjugated synthetic peptide from C-terminal region of human EDNRB.
Specificity:	Human Endothelin B Receptor / EDNRB
Epitope:	aa409-439
Reactivity:	Human, Mouse
Purification:	Ammonium sulfate precipitation
Presentation:	PBS, 0.09% sodium azide
Recommended Storage:	Maintain refrigerated at 2-8°C for up to 6 months. For long term storage store at -20°C.
Uses:	IHC - Paraffin (1:100), Immunofluorescence (1:10 - 1:50), Western blot (1:1000), Flow Cytometry (1:10 - 1:50) (Optimal dilution to be determined by the researcher)
Size:	200 µl

Immunohistochemistry Image:



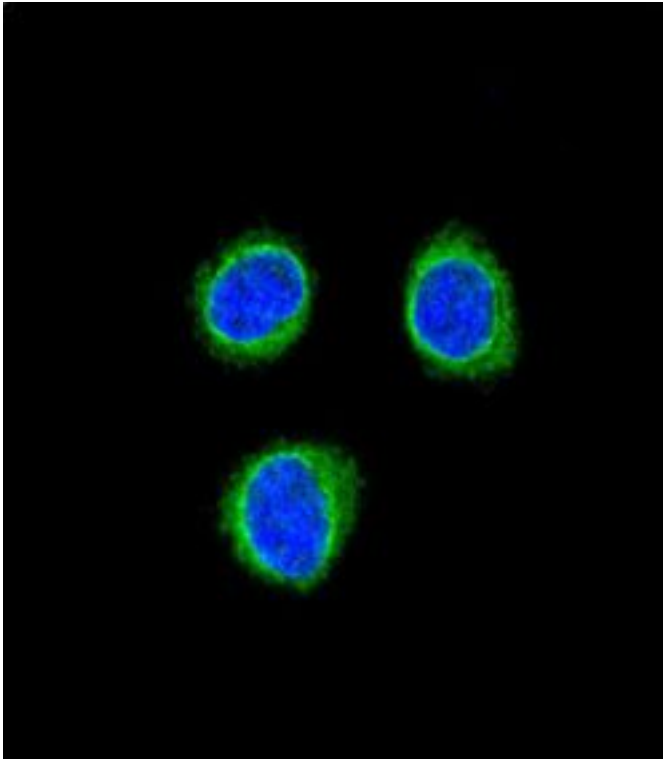
Human Brain, Cerebellum: Formalin-Fixed, Paraffin-Embedded (FFPE)

Immunohistochemistry Image:



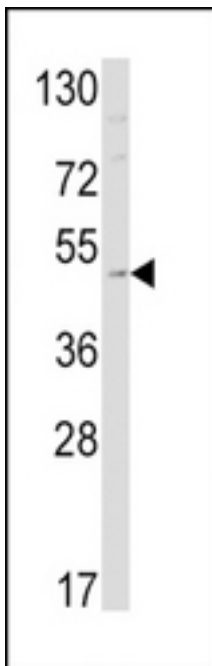
EDNRB Antibody (C-term) IHC of formalin fixed and paraffin embedded human prostate carcinoma followed by peroxidase conjugation of the secondary antibody and DAB staining. This demonstrates the use of EDNRB Antibody (C-term) for immunohistochemistry.

Immunofluorescence Image:



Confocal immunofluorescence of EDNRB Antibody (C-term) with 293 cell followed by Alexa Fluor 488-conjugated goat anti-rabbit IgG (green). DAPI was used to stain the cell nuclear (blue).

Western Blot Image:



Western blot of EDNRB Antibody (C-term) in mouse cerebellum tissue lysates (35 ug/lane). EDNRB (arrow) was detected using the purified Pab.

Requested From:

Japan

Laboratory Reagent For In Vitro Research Use Only

Not for resale without prior written consent from LifeSpan BioSciences, Inc.

Created on 9/23/2014

© 2014 LifeSpan BioSciences