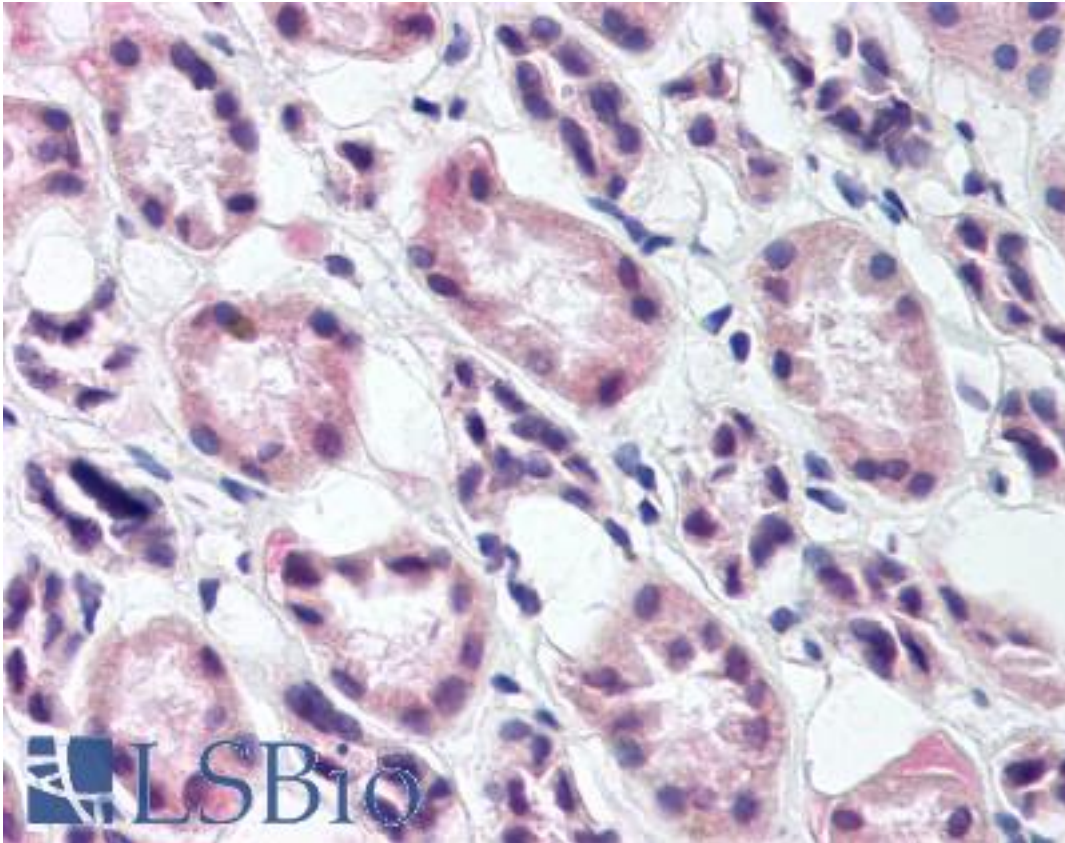


RREB1 Rabbit anti-Mouse Polyclonal Antibody - LS-B111 - LSBio

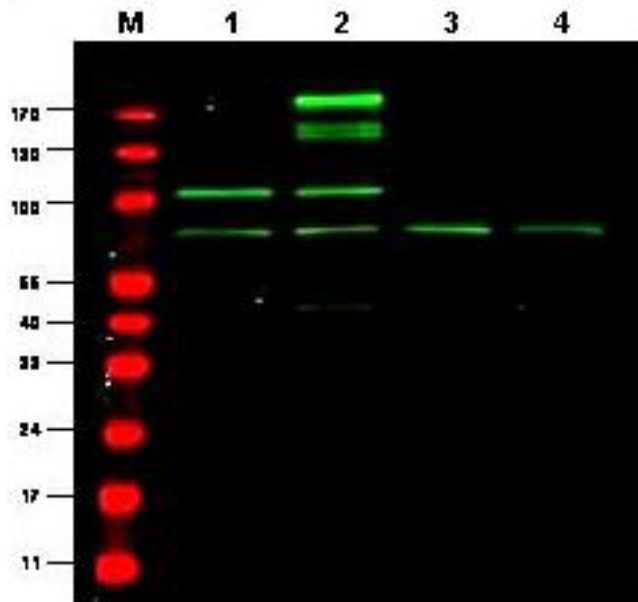
CatalogID:	LS-B111
Validation:	This antibody replaces catalog number LS-C18884. It has been validated for use in the following assays: IHC.
Target:	ras responsive element binding protein 1 (RREB1)
Synonyms:	RREB1 Antibody, DNA-binding protein Antibody, FINB Antibody, Hindsight homolog Antibody, Zep-1 Antibody, HNT Antibody, LZ321 Antibody, RREB-1 Antibody
Host	RREB1 antibody was produced in Rabbit
Clonality:	Polyclonal
Immunogen Species:	RREB1 antibody was raised against Mouse
Immunogen:	RREB1 antibody was raised against recombinant mouse RREB1.
Specificity:	Mouse RREB1 protein.
Reactivity:	Mouse, Human
Purification:	Protein A purified
Presentation:	0.02 M potassium phosphate, 0.15 M sodium chloride, pH 7.2, 0.01% sodium azide.
Recommended Storage:	Long term: -20°C; Short term: +4°C. Avoid repeat freeze-thaw cycles.
Usage Summary:	Immunohistochemistry: LS-B111 was validated for use in immunohistochemistry on a panel of 21 formalin-fixed, paraffin-embedded (FFPE) human tissues after heat induced antigen retrieval in pH 6.0 citrate buffer. After incubation with the primary antibody, slides were incubated with biotinylated secondary antibody, followed by alkaline phosphatase-streptavidin and chromogen. The stained slides were evaluated by a pathologist to confirm staining specificity. The optimal working concentration for LS-B111 was determined to be 10 ug/ml.
Uses:	IHC - Paraffin (10 µg/ml), Western blot (1:500 - 1:2000), ELISA (1:2000 - 1:10000) (Optimal dilution to be determined by the researcher)
Size:	50 µg
Concentration:	1 mg/ml

Immunohistochemistry Image:



Anti-RREB1 antibody IHC of human kidney. Immunohistochemistry of formalin-fixed, paraffin-embedded tissue after heat-induced antigen retrieval. Antibody LS-B111 concentration 10 ug/ml.

Western Blot Image:



Anti-RREB1 Antibody - Western Blot. Western blot of Protein A Purified anti-RREB1 antibody shows detection of a predominant band believed to be RREB1 in various cell lysates (1 - HEK293, 2 - RFP-RREB transfected HEK293, 3 - M460 and 4 - T1165). All lysates were loaded at 20 ug per lane and separated by SDS-PAGE. After transfer to nitrocellulose, the membrane was probed with the primary antibody diluted to 1:1000. The membrane was washed and reacted with IRDye800 conjugated Gt-a-Rabbit IgG [H&L] MX (. IRDye800 fluorescence image was captured using the Odyssey Infrared Imaging System developed by LI-COR. IRDye is a trademark of LI-COR, Inc. Size estimation was made by comparison to prestained MW markers as indicated. Personal Communication, Shuling Zhang, CCR, NCI, Bethesda, MD.

Requested From:

Japan

Laboratory Reagent For In Vitro Research Use Only

Not for resale without prior written consent from LifeSpan BioSciences, Inc.

Created on 9/23/2014

© 2014 LifeSpan BioSciences