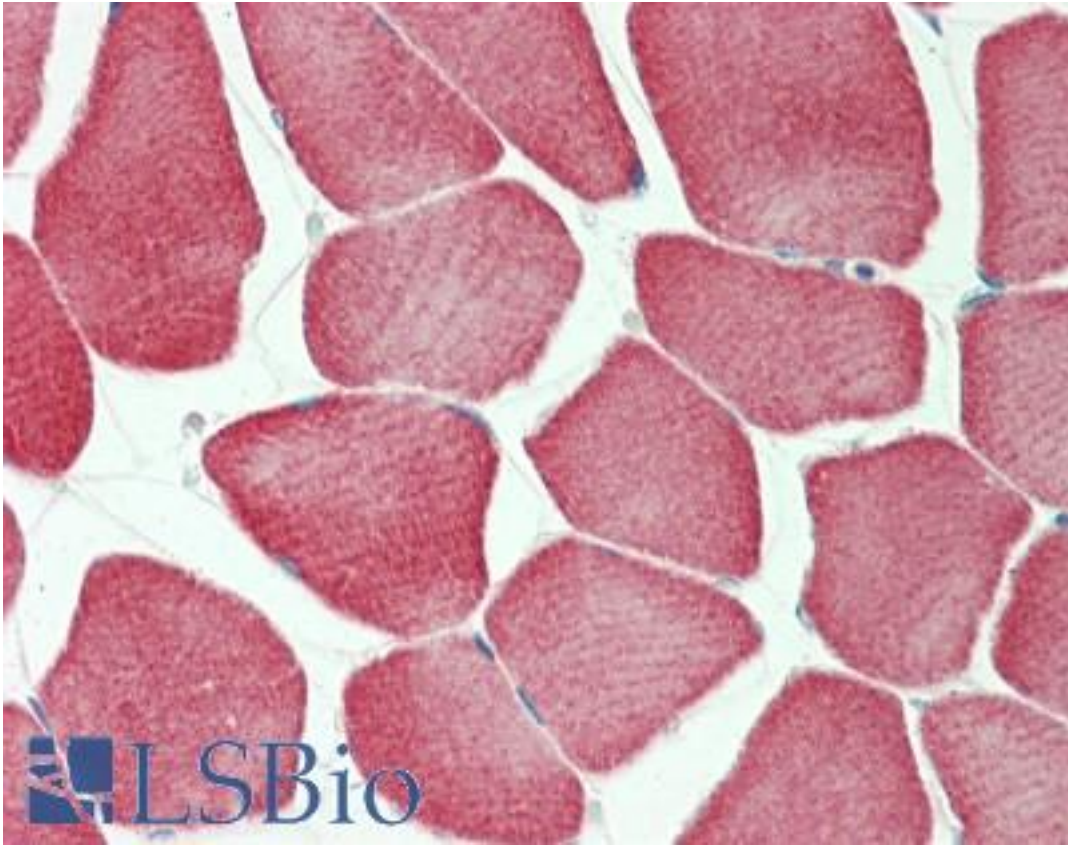


KBTBD13 Rabbit anti-Human Polyclonal (aa416-446) Antibody - LS-B11098 - LSBio

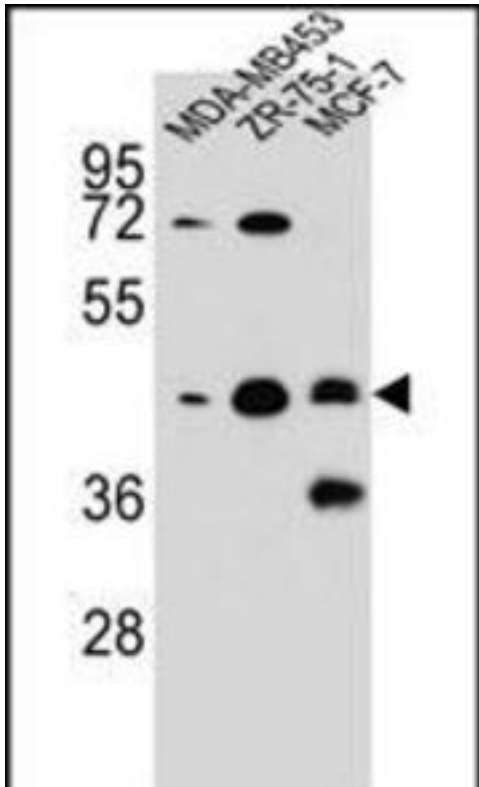
CatalogID:	LS-B11098
Validation:	This antibody replaces catalog number LS-C166810. It has been validated for use in the following assays: IHC-P.
Target:	Kelch repeat and BTB (POZ) domain containing 13 (KBTBD13)
Synonyms:	KBTBD13 Antibody, HCG_1645727 Antibody, NEM6 Antibody, HCG1645727 Antibody
Host	KBTBD13 antibody was produced in Rabbit
Clonality:	Polyclonal
Immunogen Species:	KBTBD13 antibody was raised against Human
Antigen Type:	Synthetic peptide
Immunogen:	KBTBD13 antibody was raised against kLH-conjugated synthetic peptide from C-terminal region of human hCG_1645727.
Specificity:	Human KBTBD13
Epitope:	aa416-446
Reactivity:	Human
Purification:	Immunoaffinity purified
Presentation:	PBS, 0.09% sodium azide
Recommended Storage:	Maintain refrigerated at 2-8°C for up to 6 months. For long term storage store at -20°C.
Uses:	IHC - Paraffin (1:100), Western blot (1:1000) (Optimal dilution to be determined by the researcher)
Size:	200 µl

Immunohistochemistry Image:



Human Skeletal Muscle: Formalin-Fixed, Paraffin-Embedded (FFPE)

Western Blot Image:



KBTBD13 Antibody (C-term) Western blot of MDA-MB453,ZR-75-1,MCF-7 cell line lysates (35 ug/lane).

Requested From:

Japan

Laboratory Reagent For In Vitro Research Use Only

Not for resale without prior written consent from LifeSpan BioSciences, Inc.

Created on 9/23/2014

© 2014 LifeSpan BioSciences