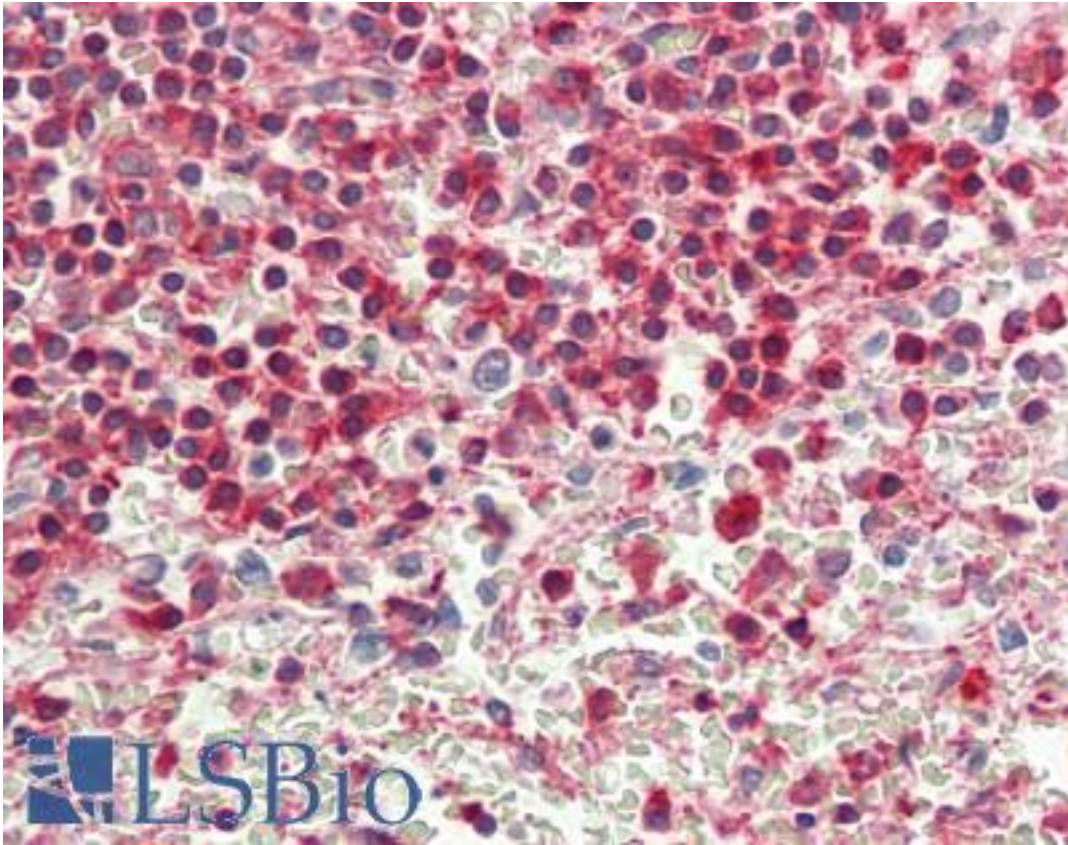


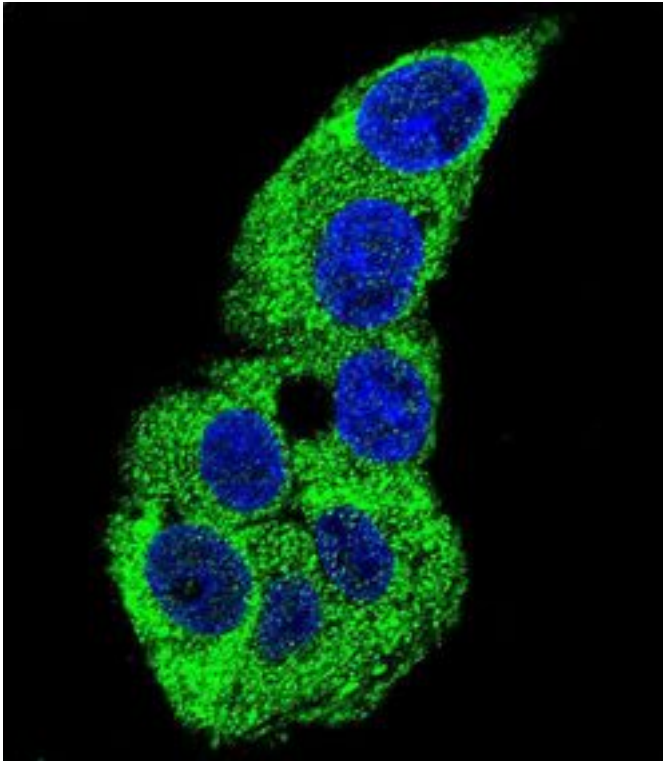
ACTG1 / Gamma Actin Rabbit anti-Human Polyclonal (aa188-215) Antibody - LS-B11095 - LSBio	
CatalogID:	LS-B11095
Validation:	This antibody replaces catalog number LS-C99258. It has been validated for use in the following assays: IHC-P.
Target:	actin, gamma 1 (ACTG1)
Synonyms:	ACTG1 Antibody, ACTG Antibody, Actin, gamma 1 Antibody, BRWS2 Antibody, Cytoskeletal gamma-actin Antibody, DFNA20 Antibody, Actin, cytoplasmic 2 Antibody, Gamma-actin Antibody, DFNA26 Antibody
Host	ACTG1 antibody was produced in Rabbit
Clonality:	Polyclonal
Immunogen Species:	ACTG1 / Gamma Actin antibody was raised against Human
Antigen Type:	Synthetic peptide
Immunogen:	ACTG1 / Gamma Actin antibody was raised against kLH conjugated synthetic peptide selected from the Center region of human ACTG1.
Epitope:	aa188-215
Reactivity:	Human
Purification:	Ammonium sulfate precipitation
Presentation:	PBS, 0.09% sodium azide
Recommended Storage:	Maintain refrigerated at 2-8°C for up to 6 months. For long term storage store at -20°C.
Uses:	IHC - Paraffin (1:100 - 1:200), Immunofluorescence (1:10 - 1:50), Western blot (1:1000), Flow Cytometry (1:10 - 1:50) (Optimal dilution to be determined by the researcher)
Size:	200 µl

Immunohistochemistry Image:



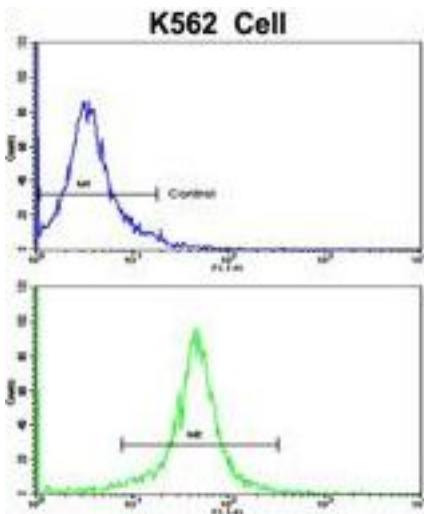
Human Spleen: Formalin-Fixed, Paraffin-Embedded (FFPE)

Immunofluorescence Image:



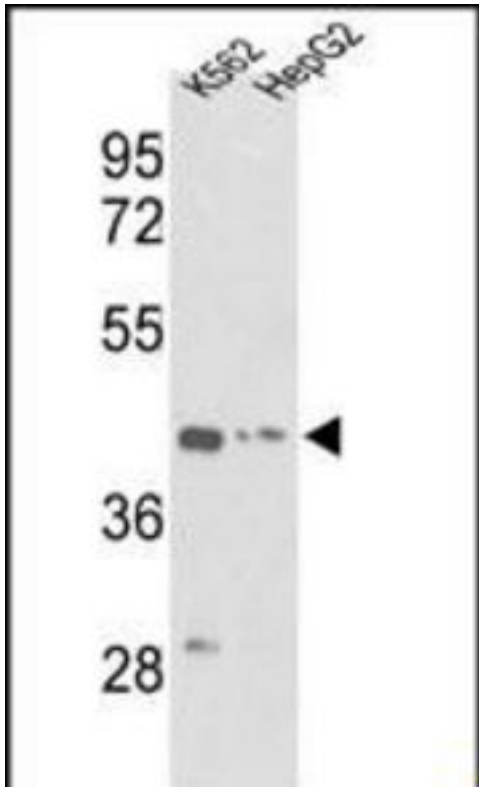
Confocal immunofluorescent analysis of ACTG1 Antibody (Center) with HepG2 cell followed by Alexa Fluor 488-conjugated goat anti-rabbit IgG (green). DAPI was used to stain the cell nuclear (blue).

Flow Cytometry Image:



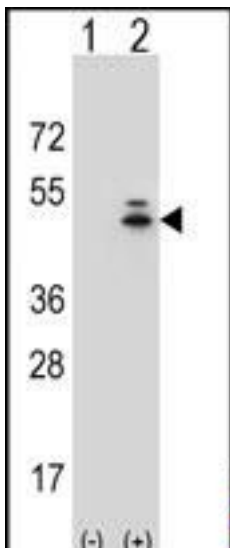
Flow cytometry of K562 cells using ACTG1 Antibody (Center) (bottom histogram) compared to a negative control cell (top histogram). FITC-conjugated goat-anti-rabbit secondary antibodies were used for the analysis.

Western Blot Image:



Western blot of ACTG1 Antibody in K562, HepG2 cell line lysates (35 ug/lane). ACTG1 (arrow) was detected using the purified Pab.

Western Blot Image:



Western blot of ACTG1 (arrow) using rabbit polyclonal ACTG1 Antibody. 293 cell lysates (2 ug/lane) either non-transfected (Lane 1) or transiently transfected (Lane 2) with the ACTG1 gene.

Requested From:

Japan

Laboratory Reagent For In Vitro Research Use Only

Not for resale without prior written consent from LifeSpan BioSciences, Inc.

Created on 9/23/2014

© 2014 LifeSpan BioSciences