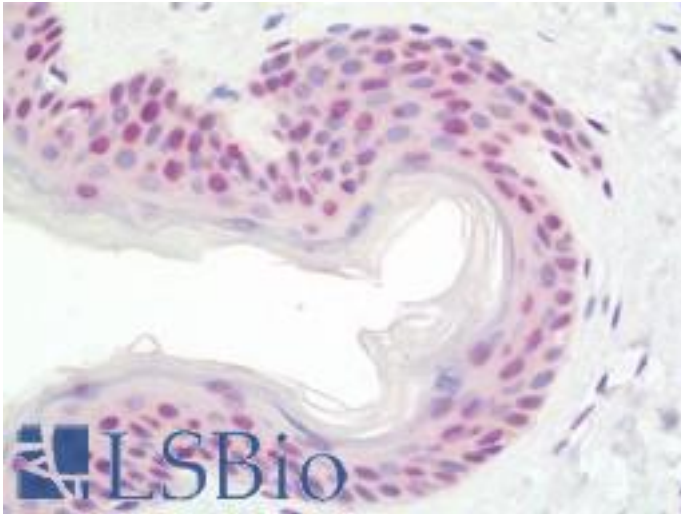


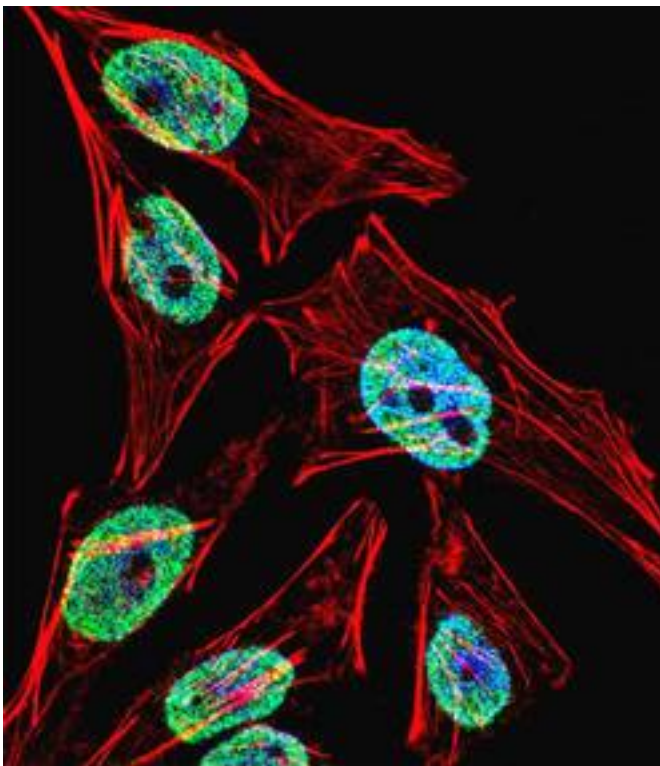
TERT / Telomerase Rabbit anti-Human Polyclonal (aa627-656) Antibody - LS-B11086 - LSBio	
CatalogID:	LS-B11086
Validation:	This antibody replaces catalog number LS-C98109. It has been validated for use in the following assays: IHC-P.
Target:	telomerase reverse transcriptase (TERT)
Synonyms:	TERT Antibody, DKCB4 Antibody, EST2 Antibody, HEST2 Antibody, PFBMFT1 Antibody, Telomerase Antibody, TP2 Antibody, DKCA2 Antibody, HTRT Antibody, TCS1 Antibody, Telomerase catalytic subunit Antibody, TRT Antibody
Host	TERT antibody was produced in Rabbit
Clonality:	Polyclonal
Immunogen Species:	TERT / Telomerase antibody was raised against Human
Antigen Type:	Synthetic peptide
Immunogen:	TERT / Telomerase antibody was raised against kLH conjugated synthetic peptide selected from the Center region of human TERT.
Epitope:	aa627-656
Reactivity:	Human
Purification:	Ammonium sulfate precipitation
Presentation:	PBS, 0.09% sodium azide
Recommended Storage:	Maintain refrigerated at 2-8°C for up to 6 months. For long term storage store at -20°C.
Uses:	IHC - Paraffin (1:100), Immunofluorescence (1:10 - 1:50), Western blot (1:1000), Flow Cytometry (1:10 - 1:50) (Optimal dilution to be determined by the researcher)
Size:	200 µl

Immunohistochemistry Image:



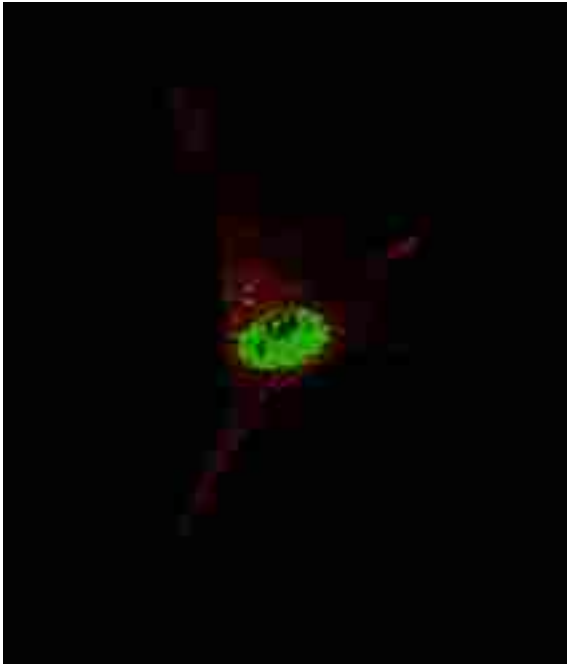
Human Skin: Formalin-Fixed, Paraffin-Embedded (FFPE)

Immunofluorescence Image:



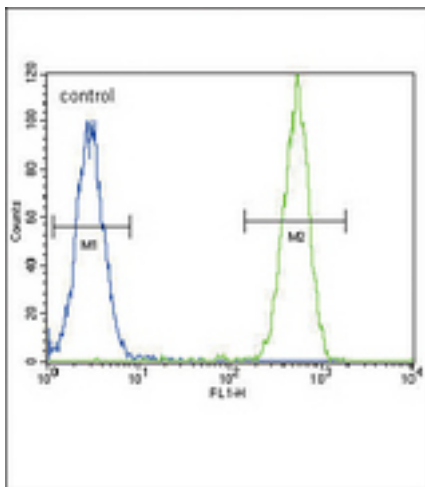
Fluorescent confocal image of HeLa cell stained with TERT Antibody (Center). HeLa cells were fixed with 4% PFA (20 min), permeabilized with Triton X-100 (0.1%, 10 min), then incubated with TERT primary antibody (1:25, 1 h at 37°C). For secondary antibody, Alexa Fluor 488 conjugated donkey anti-rabbit antibody (green) was used (1:400, 50 min at 37°C). Cytoplasmic actin was counterstained with Alexa Fluor 555 (red) conjugated Phalloidin (7 units/ml, 1 h at 37°C). Nuclei were counterstained with DAPI (blue) (10 µg/ml, 10 min). TERT immunoreactivity is localized to Nucleus significantly and Cytoplasm weakly.

Immunofluorescence Image:



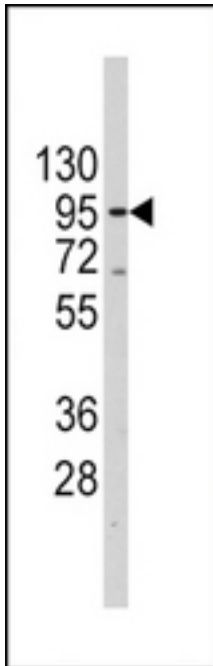
Fluorescent confocal image of SY5Y cells stained with TERT (Center) antibody. SY5Y cells were fixed with 4% PFA (20 min), permeabilized with Triton X-100 (0.2%, 30 min). Cells were then incubated with TERT (Center) primary antibody (1:200, 2 h at room temperature). For secondary antibody, Alexa Fluor 488 conjugated donkey anti-rabbit antibody (green) was used (1:1000, 1h). Nuclei were counterstained with Hoechst 33342 (blue) (10 ug/ml, 5 min). TERT immunoreactivity is localized to the nucleus of SY5Y cells.

Flow Cytometry Image:



TERT Antibody (Center) flow cytometric analysis of HeLa cells (right histogram) compared to a negative control cell (left histogram). FITC-conjugated goat-anti-rabbit secondary antibodies were used for the analysis.

Western Blot Image:



Western blot of anti-TERT Antibody (Center) (RB14069) in Jurkat cell line lysates (35 ug/lane). TERT (arrow) was detected using the purified Pab (1:60 dilution).

Requested From:

Japan

Laboratory Reagent For In Vitro Research Use Only

Not for resale without prior written consent from LifeSpan BioSciences, Inc.

Created on 9/23/2014

© 2014 LifeSpan BioSciences