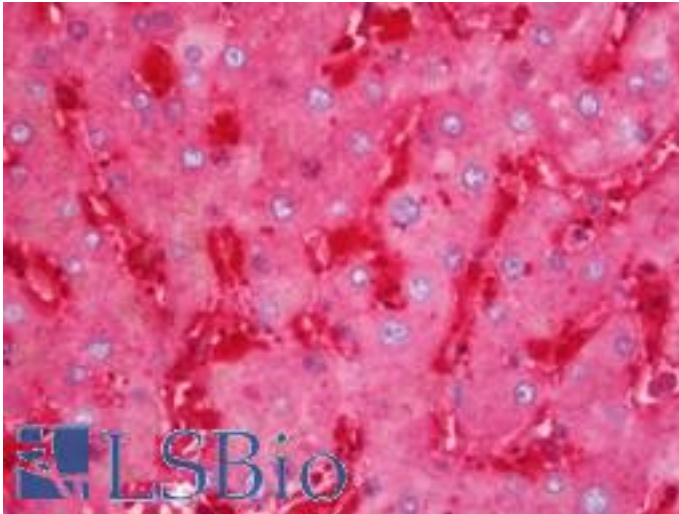


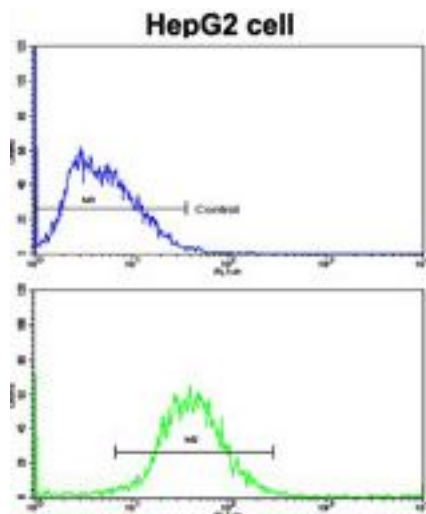
Ferritin Heavy Chain / FTH1 Rabbit anti-Human Polyclonal (aa154-183) Antibody - LS-B11085 - LSBio	
CatalogID:	LS-B11085
Validation:	This antibody replaces catalog number LS-C166268. It has been validated for use in the following assays: IHC-P.
Target:	ferritin, heavy polypeptide 1 (FTH1)
Synonyms:	FTH1 Antibody, Apoferritin Antibody, Ferritin H subunit Antibody, Ferritin heavy chain Antibody, Ferritin, heavy polypeptide 1 Antibody, FHC Antibody, FTHL6 Antibody, PIG15 Antibody, PLIF Antibody, FTH Antibody
Host	FTH1 antibody was produced in Rabbit
Clonality:	Polyclonal
Immunogen Species:	Ferritin Heavy Chain / FTH1 antibody was raised against Human
Antigen Type:	Synthetic peptide
Immunogen:	Ferritin Heavy Chain / FTH1 antibody was raised against kLH-conjugated synthetic peptide from C-terminal region of human FTH1.
Specificity:	Human Ferritin Heavy Chain / FTH1
Epitope:	aa154-183
Reactivity:	Human
Purification:	Immunoaffinity purified
Presentation:	PBS, 0.09% sodium azide
Recommended Storage:	Maintain refrigerated at 2-8°C for up to 6 months. For long term storage store at -20°C.
Uses:	IHC - Paraffin (1:100), Western blot (1:1000), Flow Cytometry (1:10 - 1:50) (Optimal dilution to be determined by the researcher)
Size:	200 µl

Immunohistochemistry Image:



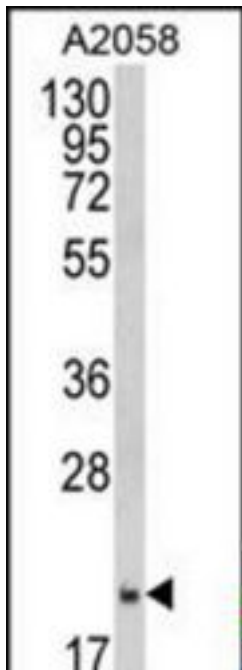
Human Liver: Formalin-Fixed, Paraffin-Embedded (FFPE)

Flow Cytometry Image:



Flow cytometry of HepG2 cells using FTH1 Antibody (C-term)(bottom histogram) compared to a negative control cell (top histogram). FITC-conjugated goat-anti-rabbit secondary antibodies were used for the analysis.

Western Blot Image:



Western blot of FTH1 Antibody (C-term) in A2058 cell line lysates (35 ug/lane). FTH1 (arrow) was detected using the purified Pab.

Requested From:

Japan

Laboratory Reagent For In Vitro Research Use Only

Not for resale without prior written consent from LifeSpan BioSciences, Inc.

Created on 9/23/2014

© 2014 LifeSpan BioSciences