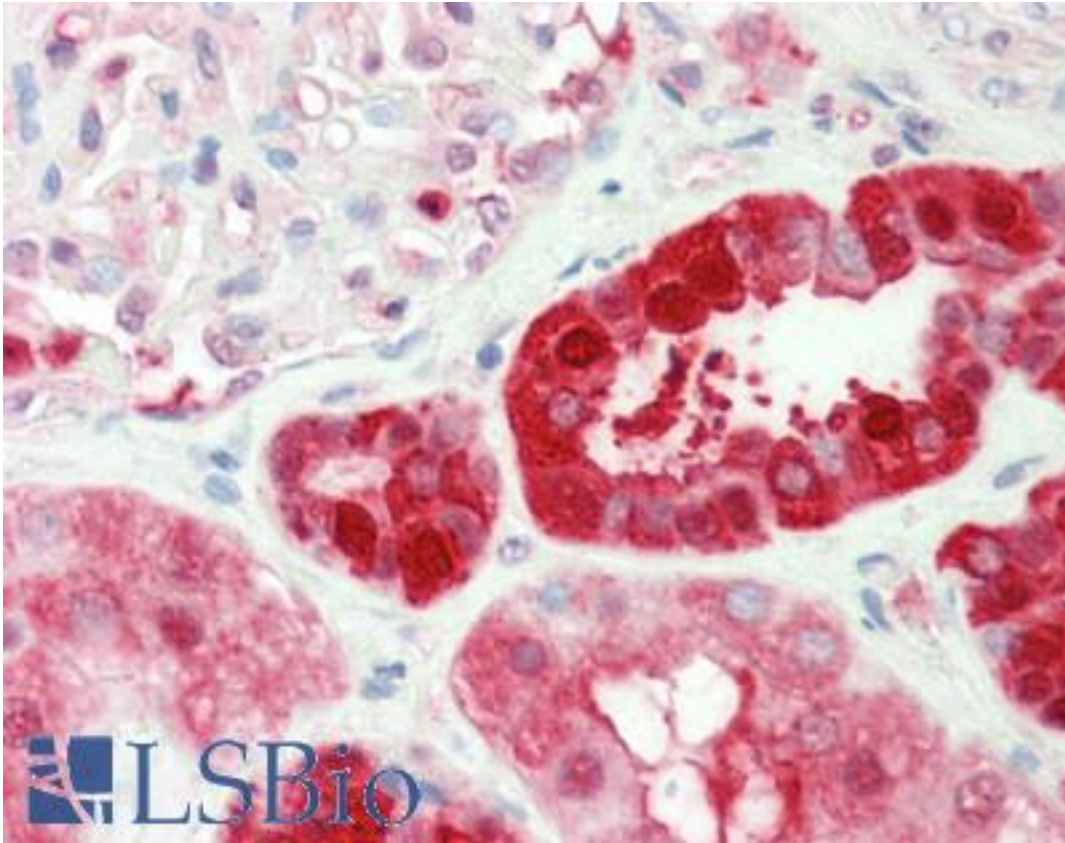


GPI Mouse anti-Human Monoclonal (4B11) Antibody - LS-B11078 - LSBio

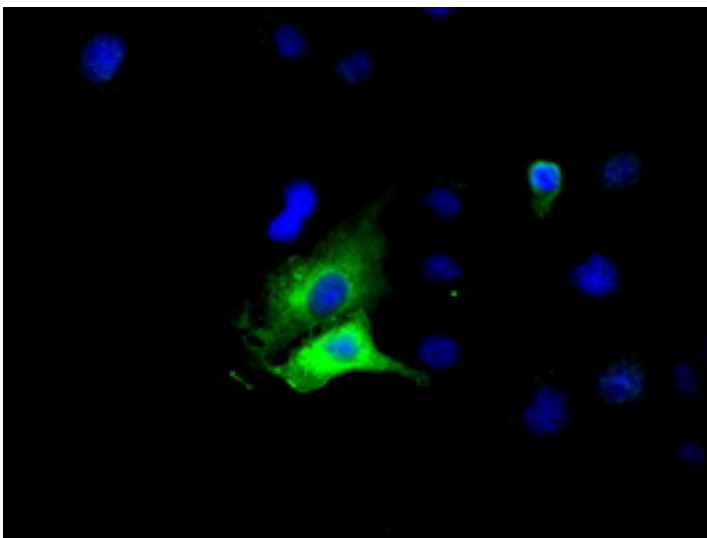
CatalogID:	LS-B11078
Validation:	This antibody replaces catalog number LS-C115165. It has been validated for use in the following assays: IHC-P.
Target:	glucose-6-phosphate isomerase (GPI)
Synonyms:	GPI Antibody, AMF Antibody, Autocrine motility factor Antibody, Glucose phosphate isomerase Antibody, Hexose monophosphate isomerase Antibody, Hexosephosphate isomerase Antibody, Neuroleukin Antibody, Oxoisomerase Antibody, Phosphoglucose isomerase Antibody, Phosphohexomutase Antibody, Phosphohexose isomerase Antibody, SA36 Antibody, PGI Antibody, SA-36 Antibody, Glucose-6-phosphate isomerase Antibody, GNPI Antibody, PHI Antibody, Phosphosaccharomutase Antibody, Sperm antigen 36 Antibody, Sperm antigen-36 Antibody
Host	GPI antibody was produced in Mouse
Clonality:	Monoclonal
Isotype:	IgG1
Clone Name:	4B11
Immunogen Species:	GPI antibody was raised against Human
Antigen Type:	Recombinant protein
Immunogen:	GPI antibody was raised against full length human recombinant protein of human GPI(NP_000166) produced in HEK293T cell.
Specificity:	Human GPI
Reactivity:	Human
Purification:	Protein A/G purified
Presentation:	PBS, pH 7.3, 1% BSA, 50% glycerol, 0.02% sodium azide
Recommended Storage:	Store at -20°C. Minimize freezing and thawing.
Usage Summary:	Concentration: 0.5-1.0 mg/ml (Lot dependent)
Uses:	IHC - Paraffin (10 µg/ml), Immunofluorescence (1:100), Western blot (1:2000) (Optimal dilution to be determined by the researcher)
Size:	50 µl
Concentration:	0.81 mg/ml

Immunohistochemistry Image:



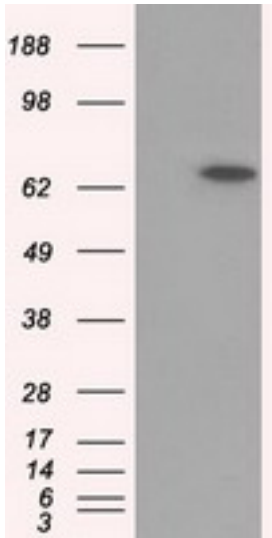
Human Kidney: Formalin-Fixed, Paraffin-Embedded (FFPE)

Immunofluorescence Image:



Anti-GPI mouse monoclonal antibody immunofluorescent staining of COS7 cells transiently transfected by pCMV6-ENTRY GPI.

Western Blot Image:



HEK293T cells were transfected with the pCMV6-ENTRY control (Left lane) or pCMV6-ENTRY GPI (Right lane) cDNA for 48 hrs and lysed. Equivalent amounts of cell lysates (5 ug per lane) were separated by SDS-PAGE and immunoblotted with anti-GPI.

Requested From:

Japan

Laboratory Reagent For In Vitro Research Use Only

Not for resale without prior written consent from LifeSpan BioSciences, Inc.

Created on 9/23/2014

© 2014 LifeSpan BioSciences