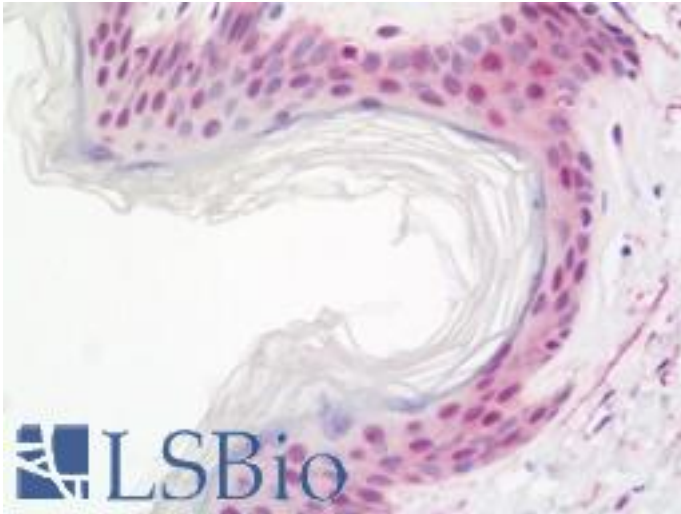


MBD3 Rabbit anti-Human Polyclonal (aa265-291) Antibody - LS-B11064 - LSBio	
<b>CatalogID:</b>	LS-B11064
<b>Validation:</b>	This antibody replaces catalog number LS-C286898. It has been validated for use in the following assays: IHC-P.
<b>Target:</b>	methyl-CpG binding domain protein 3 (MBD3)
<b>Synonyms:</b>	MBD3 Antibody
<b>Host</b>	MBD3 antibody was produced in Rabbit
<b>Clonality:</b>	Polyclonal
<b>Isotype:</b>	IgG
<b>Immunogen Species:</b>	MBD3 antibody was raised against Human
<b>Specificity:</b>	Region between residue 265 and 291 of human methylCpG binding domain protein 3 using the numbering given in entry NP_003917.1 (GeneID 53615).
<b>Epitope:</b>	aa265-291
<b>Reactivity:</b>	Human
<b>Purification:</b>	Immunoaffinity purified
<b>Presentation:</b>	Tris-buffered saline, 0.1% BSA, 0.09% sodium azide.
<b>Recommended Storage:</b>	Store at 2-8°C for up to 1 year.
<b>Usage Summary:</b>	Immunohistochemistry: Antigen retrieval is recommended. Antigen retrieval with citrate buffer will enhance staining. Likely to work with frozen sections. In some cases, the antibody may be diluted further than indicated. Human controls: Breast Carcinoma, Colon Carcinoma, Osteosarcoma, Ovarian Carcinoma.
<b>Uses:</b>	IHC - Paraffin (1:100), Immunofluorescence (1:50 - 1:500) (Optimal dilution to be determined by the researcher)
<b>Size:</b>	50 µl
<b>Manufacturer:</b>	Bethyl Laboratories, Inc.

**Immunohistochemistry Image:**



Human Skin: Formalin-Fixed, Paraffin-Embedded (FFPE)

**Requested From:**

Japan

Laboratory Reagent For In Vitro Research Use Only

Not for resale without prior written consent from LifeSpan BioSciences, Inc.

Created on 9/23/2014

© 2014 LifeSpan BioSciences