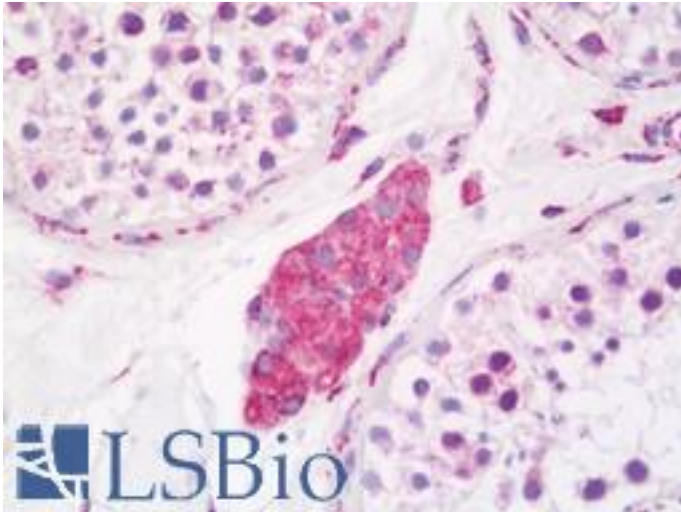


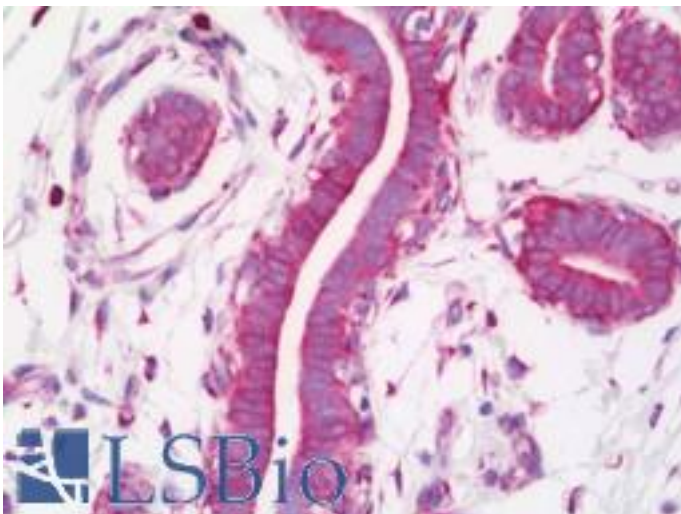
CKAP4 Rabbit anti-Human Polyclonal (aa500-550) Antibody - LS-B11060 - LSBio	
CatalogID:	LS-B11060
Validation:	This antibody replaces catalog number LS-C286863. It has been validated for use in the following assays: IHC-P.
Target:	cytoskeleton-associated protein 4 (CKAP4)
Synonyms:	CKAP4 Antibody, 63 kDa membrane protein Antibody, ERGIC-63 Antibody, CLIMP-63 Antibody, p63 Antibody
Host	CKAP4 antibody was produced in Rabbit
Clonality:	Polyclonal
Isotype:	IgG
Immunogen Species:	CKAP4 antibody was raised against Human
Specificity:	Region between residue 500 and 550 of human cytoskeleton-associated protein 4 using the numbering given in entry NP_006816.2 (GeneID 10970).
Epitope:	aa500-550
Reactivity:	Human, Mouse
Non-Reactivity:	Chimpanzee, Orangutan
Purification:	Immunoaffinity purified
Presentation:	Tris-buffered saline, 0.1% BSA, 0.09% sodium azide.
Recommended Storage:	Store at 2-8°C for up to 1 year.
Usage Summary:	Immunohistochemistry: Antigen retrieval is recommended. Antigen retrieval with citrate buffer will enhance staining. Likely to work with frozen sections. In some cases, the antibody may be diluted further than indicated. Human controls: Breast Carcinoma, Colon Carcinoma, Non-Small Cell Lung Cancer, Osteosarcoma, Placenta. Mouse controls: Hybridoma Tumor.
Uses:	IHC - Paraffin (1:100), Immunofluorescence (1:50 - 1:500) (Optimal dilution to be determined by the researcher)
Size:	50 µl
Manufacturer:	Bethyl Laboratories, Inc.

Immunohistochemistry Image:



Human Testis: Formalin-Fixed, Paraffin-Embedded (FFPE)

Immunohistochemistry Image:



Human Breast: Formalin-Fixed, Paraffin-Embedded (FFPE)

Requested From:

Japan

Laboratory Reagent For In Vitro Research Use Only

Not for resale without prior written consent from LifeSpan BioSciences, Inc.

Created on 9/23/2014

© 2014 LifeSpan BioSciences