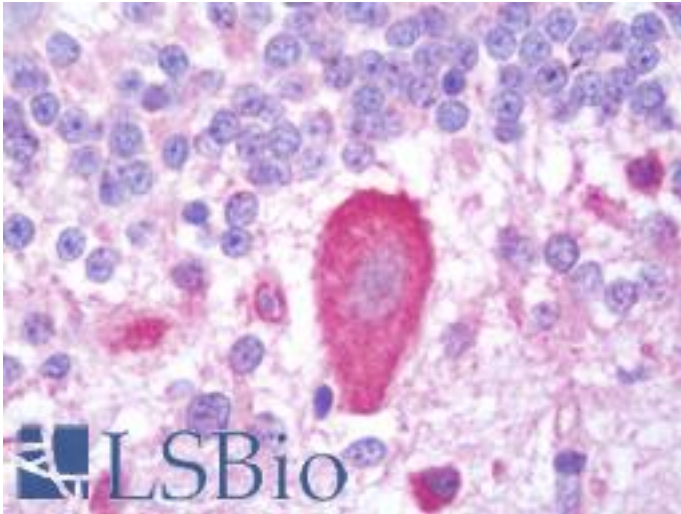


ITPR3 / IP3R Rabbit anti-Human Polyclonal (aa625-675) Antibody - LS-B11059 - LSBio	
CatalogID:	LS-B11059
Validation:	This antibody replaces catalog number LS-C286845. It has been validated for use in the following assays: IHC-P.
Target:	inositol 1,4,5-trisphosphate receptor, type 3 (ITPR3)
Synonyms:	ITPR3 Antibody, InsP3R3 Antibody, IP3R Antibody, InsP3R type 3 Antibody, InsP3R type III Antibody, IP3 receptor Antibody, IP3R 3 Antibody, IP3R3 Antibody, Type 3 InsP3 receptor Antibody, IP3 receptor isoform 3 Antibody
Family / Subfamily:	Ion Channel / Inositol 1,4,5-trisphosphate receptor
Host	ITPR3 antibody was produced in Rabbit
Clonality:	Polyclonal
Isotype:	IgG
Immunogen Species:	ITPR3 / IP3R antibody was raised against Human
Specificity:	Region between residue 625 and 675 of human inositol 1,4,5-trisphosphate receptor, type 3 using the numbering given in entry NP_002215.2 (GeneID 3710).
Epitope:	aa625-675
Reactivity:	Human
Purification:	Immunoaffinity purified
Presentation:	Tris-buffered saline, 0.1% BSA, 0.09% sodium azide.
Recommended Storage:	Store at 2-8°C for up to 1 year.
Usage Summary:	Immunohistochemistry: Antigen retrieval is recommended. Antigen retrieval with citrate buffer will enhance staining. Likely to work with frozen sections. In some cases, the antibody may be diluted further than indicated. Human controls: Breast Carcinoma, Colon Carcinoma, Osteosarcoma, Ovarian Carcinoma, Stomach Adenocarcinoma.
Uses:	IHC - Paraffin (1:100), Immunofluorescence (1:50 - 1:500) (Optimal dilution to be determined by the researcher)
Size:	50 µl
Manufacturer:	Bethyl Laboratories, Inc.

Immunohistochemistry Image:



Human Brain, Cerebellum: Formalin-Fixed, Paraffin-Embedded (FFPE)

Requested From:

Japan

Laboratory Reagent For In Vitro Research Use Only

Not for resale without prior written consent from LifeSpan BioSciences, Inc.

Created on 9/23/2014

© 2014 LifeSpan BioSciences