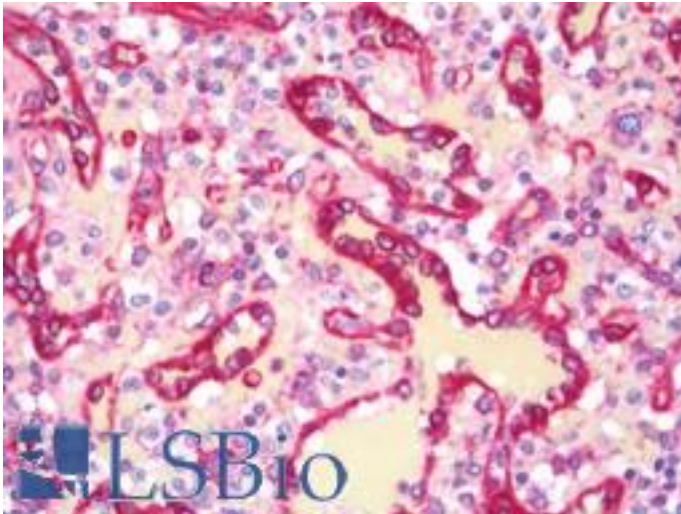


MAP4 Rabbit anti-Human Polyclonal (aa1102-1152) Antibody - LS-B11054 - LSBio

| | |
|-----------------------------|--|
| CatalogID: | LS-B11054 |
| Validation: | This antibody replaces catalog number LS-C286745. It has been validated for use in the following assays: IHC-P. |
| Target: | microtubule-associated protein 4 (MAP4) |
| Synonyms: | MAP4 Antibody, MAP-4 Antibody |
| Host | MAP4 antibody was produced in Rabbit |
| Clonality: | Polyclonal |
| Isotype: | IgG |
| Immunogen Species: | MAP4 antibody was raised against Human |
| Specificity: | Region between residue 1102 and 1152 of human microtubule-associated protein 4 using the numbering given in entry NP_002366.2 (GeneID 4134). |
| Epitope: | aa1102-1152 |
| Reactivity: | Human |
| Purification: | Immunoaffinity purified |
| Presentation: | Tris-buffered saline, 0.1% BSA, 0.09% sodium azide. |
| Recommended Storage: | Store at 2-8°C for up to 1 year. |
| Usage Summary: | Immunohistochemistry: Antigen retrieval is recommended. Antigen retrieval with citrate buffer will enhance staining. Likely to work with frozen sections. In some cases, the antibody may be diluted further than indicated. Human controls: Breast Carcinoma, Colon Carcinoma, Ovarian Carcinoma, Pancreatic Islet Cell Tumor, Prostate Carcinoma, Stomach Adenocarcinoma, Testicular Seminoma. |
| Uses: | IHC - Paraffin (1:100), Immunofluorescence (1:50 - 1:500) (Optimal dilution to be determined by the researcher) |
| Size: | 50 µl |
| Manufacturer: | Bethyl Laboratories, Inc. |

Immunohistochemistry Image:



Human Spleen: Formalin-Fixed, Paraffin-Embedded (FFPE)

Requested From:

Japan

Laboratory Reagent For In Vitro Research Use Only

Not for resale without prior written consent from LifeSpan BioSciences, Inc.

Created on 9/23/2014

© 2014 LifeSpan BioSciences