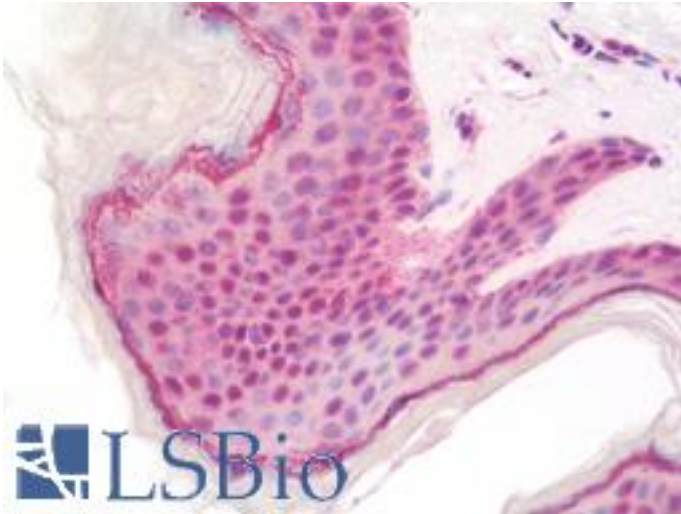


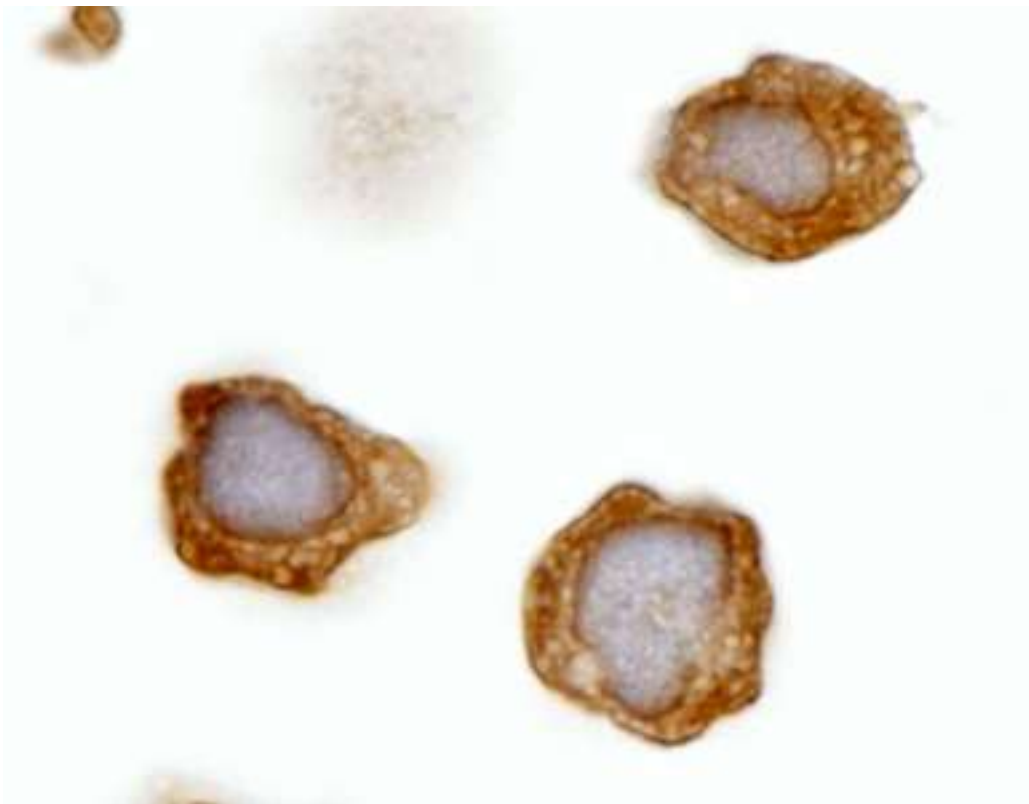
ABL1 / c-ABL Rabbit anti-Human Polyclonal (aa850-900) Antibody - LS-B11050 - LSBio	
CatalogID:	LS-B11050
Validation:	This antibody replaces catalog number LS-C292255. It has been validated for use in the following assays: IHC-P.
Target:	c-abl oncogene 1, non-receptor tyrosine kinase (ABL1)
Synonyms:	ABL1 Antibody, Bcr/c-abl oncogene protein Antibody, Bcr-Abl Antibody, Bcr/abl Antibody, C-ABL Antibody, ABL Antibody, JTK7 Antibody, p150 Antibody, Tyrosine -protein kinase ABL1 Antibody, Proto-oncogene c-Abl Antibody, V-abl Antibody
Family / Subfamily:	Protein Kinase / Abl
Host	ABL1 antibody was produced in Rabbit
Clonality:	Polyclonal
Isotype:	IgG
Immunogen Species:	ABL1 / c-ABL antibody was raised against Human
Specificity:	Region between residue 850 and 900 of human v-abl Abelson murine leukemia viral oncogene homolog 1 using the numbering given in entry NP_005148.2 (GeneID 25).
Epitope:	aa850-900
Reactivity:	Human
Purification:	Immunoaffinity purified
Presentation:	Tris-buffered saline, 0.1% BSA, 0.09% sodium azide.
Recommended Storage:	Store at 2-8°C for up to 1 year.
Usage Summary:	Immunohistochemistry: Antigen retrieval is recommended. Antigen retrieval with citrate buffer will enhance staining. Likely to work with frozen sections. In some cases, the antibody may be diluted further than indicated. Human controls: Breast Carcinoma, K562 Cells, Ovarian Carcinoma, Prostate Carcinoma.
Uses:	IHC - Paraffin (1:100), ICC (1:100 - 1:500), Immunofluorescence (1:50 - 1:500) (Optimal dilution to be determined by the researcher)
Size:	50 µl
Manufacturer:	Bethyl Laboratories, Inc.

Immunohistochemistry Image:



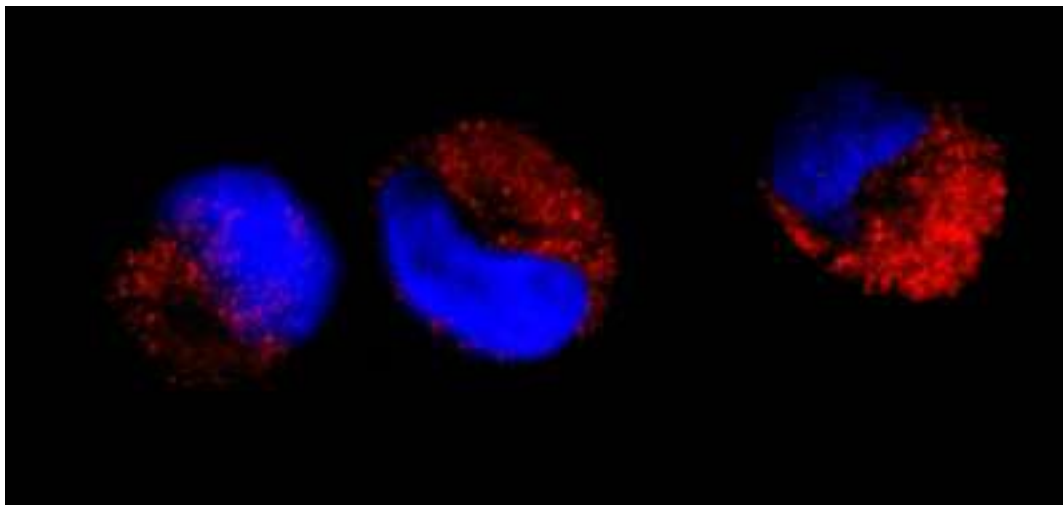
Human Skin: Formalin-Fixed, Paraffin-Embedded (FFPE)

Immunocytochemistry Image:



Detection of Human cAbl by Immunocytochemistry. Sample: FFPE section of human K562 cells (contains the chromosomal translocation, t(9:22) that creates the BCR/ABL fusion gene). Antibody: Affinity purified rabbit anti-cAbl used at a dilution of 1:250.

Immunocytochemistry Image:



Detection of Human cAbl by Immunocytochemistry. Sample: FFPE section of human K562 cells (contains the chromosomal translocation, t(9:22) that creates the BCR/ABL fusion gene). Antibody: Affinity purified rabbit anti-cAbl used at a dilution of 1:250. Detection: Red-fluorescent goat anti-rabbit IgG highly cross-adsorbed Antibody Hilyte Plus 555 (A120-501E) used at a dilution of 1:100.

Requested From:

Japan

Laboratory Reagent For In Vitro Research Use Only

Not for resale without prior written consent from LifeSpan BioSciences, Inc.

Created on 9/23/2014

© 2014 LifeSpan BioSciences