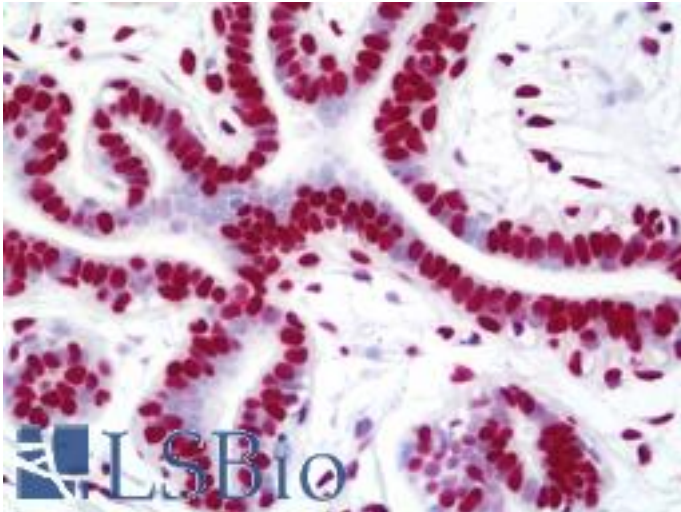


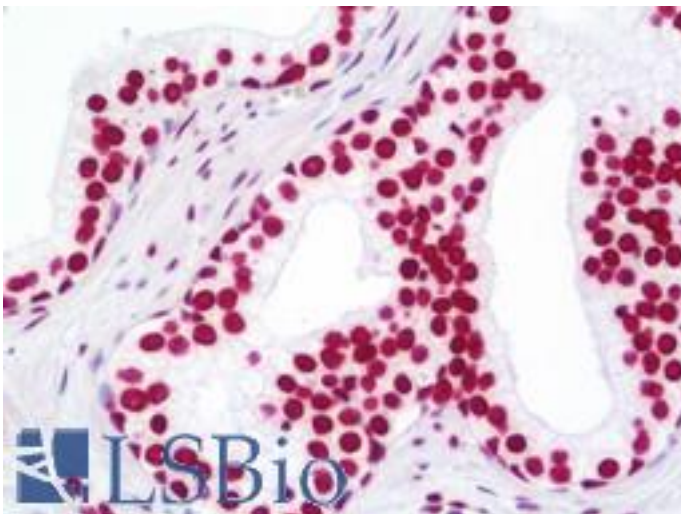
NUMA1 / NUMA Rabbit anti-Human Polyclonal (aa900-950) Antibody - LS-B11047 - LSBio	
CatalogID:	LS-B11047
Validation:	This antibody replaces catalog number LS-C286543. It has been validated for use in the following assays: IHC-P.
Target:	nuclear mitotic apparatus protein 1 (NUMA1)
Synonyms:	NUMA1 Antibody, Structural nuclear protein Antibody, NuMA protein Antibody, SP-H antigen Antibody, NUMA Antibody
Host	NUMA1 antibody was produced in Rabbit
Clonality:	Polyclonal
Isotype:	IgG
Immunogen Species:	NUMA1 / NUMA antibody was raised against Human
Specificity:	Region between residue 900 and 950 of human nuclear mitotic apparatus protein 1 using the numbering given in entry NP_006176.2 (GeneID 4926).
Epitope:	aa900-950
Reactivity:	Human
Purification:	Immunoaffinity purified
Presentation:	Tris-buffered saline, 0.1% BSA, 0.09% sodium azide.
Recommended Storage:	Store at 2-8°C for up to 1 year.
Usage Summary:	Immunohistochemistry: Antigen retrieval is recommended. Antigen retrieval with citrate buffer will enhance staining. Likely to work with frozen sections. In some cases, the antibody may be diluted further than indicated. Human controls: Anaplastic Thyroid Carcinoma, Breast Carcinoma, Colon Carcinoma, Linitis Plastica Stomach Cancer, Lung Adenocarcinoma, Ovarian Carcinoma, Pancreatic Islet Cell Tumor, Prostate Carcinoma, Skin Basal Cell Carcinoma, Skin Melanoma, Stomach Adenocarcinoma, Testicular Seminoma.
Uses:	IHC - Paraffin (1:100), Immunofluorescence (1:50 - 1:500) (Optimal dilution to be determined by the researcher)
Size:	50 µl
Manufacturer:	Bethyl Laboratories, Inc.

Immunohistochemistry Image:



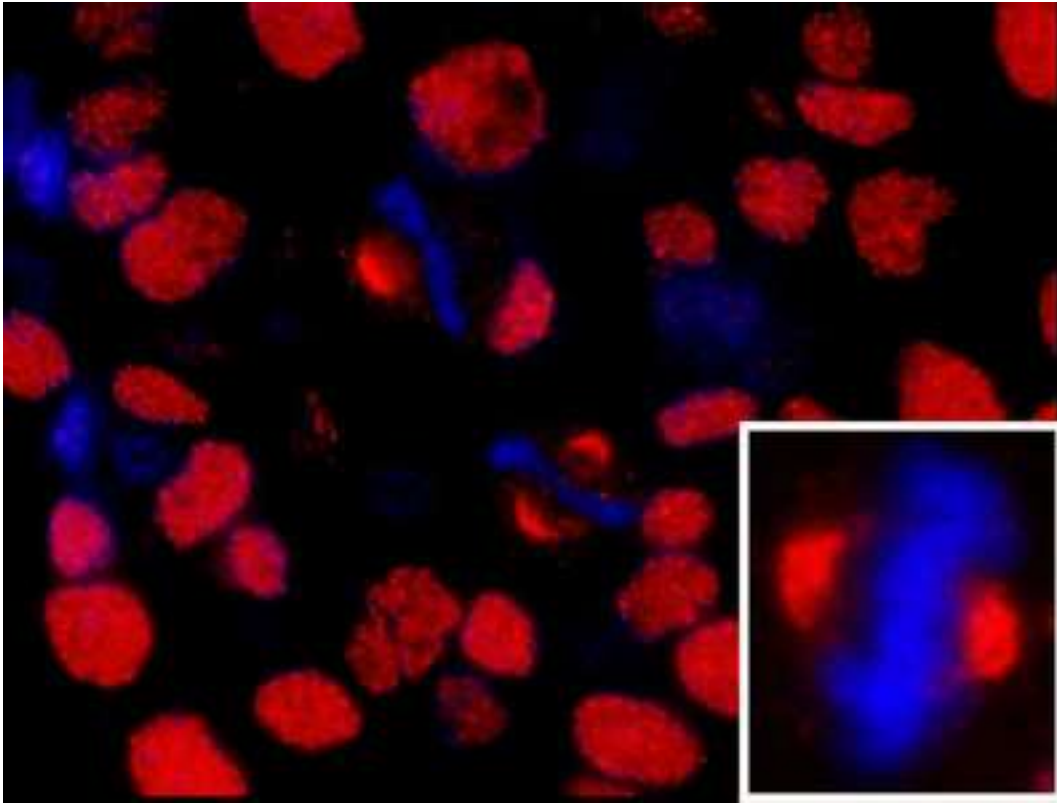
Human Breast: Formalin-Fixed, Paraffin-Embedded (FFPE)

Immunohistochemistry Image:



Human Prostate: Formalin-Fixed, Paraffin-Embedded (FFPE)

Immunofluorescence Image:



Detection of Human NUMA by Immunofluorescence. Sample: FFPE section of human breast carcinoma. Antibody: Affinity purified rabbit anti-NUMA used at a dilution of 1:100. Detection: Red-fluorescent goat anti-rabbit IgG highly cross-adsorbed Antibody Hilyte Plus 555 (A120-501E) used at a dilution of 1:100.

Requested From:

Japan

Laboratory Reagent For In Vitro Research Use Only

Not for resale without prior written consent from LifeSpan BioSciences, Inc.

Created on 9/23/2014

© 2014 LifeSpan BioSciences