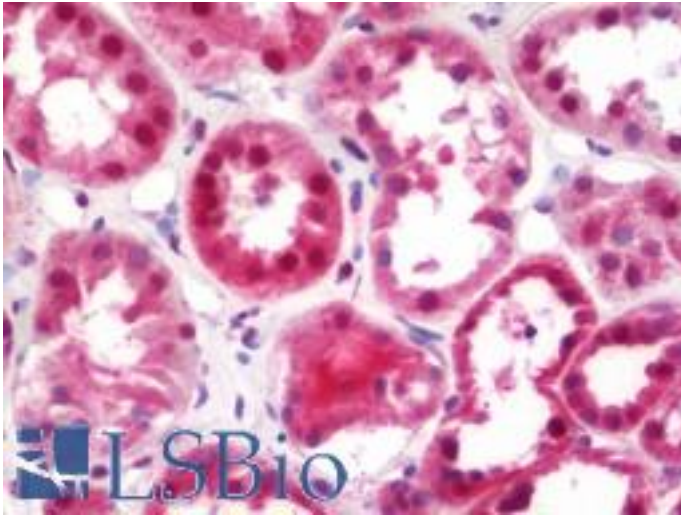


ABI1 / ABI-1 Rabbit anti-Human Polyclonal (aa325-375) Antibody - LS-B11045 - LSBio	
CatalogID:	LS-B11045
Validation:	This antibody replaces catalog number LS-C286488. It has been validated for use in the following assays: IHC-P.
Target:	abl-interactor 1 (ABI1)
Synonyms:	ABI1 Antibody, Abelson interactor 1 Antibody, Abl-interactor protein 1 long Antibody, ABI-1 Antibody, Abl-interactor 1 Antibody, Abl interactor 1 Antibody, Abl-binding protein 4 Antibody, ABLBP4 Antibody, NAP1BP Antibody, Nap1 binding protein Antibody, SSH3BP1 Antibody, Nap1-binding protein Antibody, E3B1 Antibody, Eps8-binding protein Antibody, Interactor protein AbIBP4 Antibody, SSH3BP Antibody
Host	ABI1 antibody was produced in Rabbit
Clonality:	Polyclonal
Isotype:	IgG
Immunogen Species:	ABI1 / ABI-1 antibody was raised against Human
Specificity:	Region between residue 325 and 375 of human ablinterator 1 using the numbering given in entry NP_005461.2 (GeneID 10006).
Epitope:	aa325-375
Reactivity:	Human, Mouse
Purification:	Immunoaffinity purified
Presentation:	Tris-buffered saline, 0.1% BSA, 0.09% sodium azide.
Recommended Storage:	Store at 2-8°C for up to 1 year.
Usage Summary:	Immunohistochemistry: Antigen retrieval is recommended. Antigen retrieval with citrate buffer will enhance staining. Likely to work with frozen sections. In some cases, the antibody may be diluted further than indicated. Human controls: Metastatic Lymph Node, Ovarian Carcinoma.
Uses:	IHC - Paraffin (1:100), Immunofluorescence (1:50 - 1:500) (Optimal dilution to be determined by the researcher)
Size:	50 µl
Manufacturer:	Bethyl Laboratories, Inc.

Immunohistochemistry Image:



Human Kidney: Formalin-Fixed, Paraffin-Embedded (FFPE)

Requested From:

Japan

Laboratory Reagent For In Vitro Research Use Only

Not for resale without prior written consent from LifeSpan BioSciences, Inc.

Created on 9/23/2014

© 2014 LifeSpan BioSciences