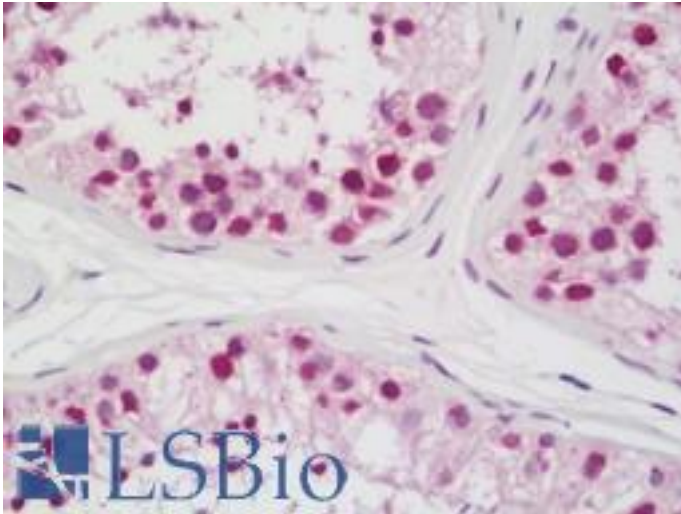


XPO1 / CRM1 Rabbit anti-Human Polyclonal (C-Terminus) Antibody - LS-B11039 - LSBio	
CatalogID:	LS-B11039
Validation:	This antibody replaces catalog number LS-C286407. It has been validated for use in the following assays: IHC-P.
Target:	exportin 1 (CRM1 homolog, yeast) (XPO1)
Synonyms:	XPO1 Antibody, CRM1, yeast, homolog Antibody, Exp1 Antibody, Exportin-1 Antibody, CRM1 Antibody
Host	XPO1 antibody was produced in Rabbit
Clonality:	Polyclonal
Isotype:	IgG
Immunogen Species:	XPO1 / CRM1 antibody was raised against Human
Specificity:	Region between residues 1025 and the C-terminus (residue 1071) of human Chromosome Region Maintenance 1 (Exportin 1) using the numbering given in entry NP_003391.1 (GeneID 7514).
Epitope:	C-Terminus
Reactivity:	Human, Mouse
Purification:	Immunoaffinity purified
Presentation:	Tris-buffered saline, 0.1% BSA, 0.09% sodium azide.
Recommended Storage:	Store at 2-8°C for up to 1 year.
Usage Summary:	Immunohistochemistry: Antigen retrieval is recommended. Antigen retrieval with citrate buffer will enhance staining. Likely to work with frozen sections. In some cases, the antibody may be diluted further than indicated. Human controls: Breast Carcinoma, Colon Carcinoma, Linitis Plastica Stomach Cancer, Metastatic Lymph Node, Ovarian Carcinoma, Pancreatic Islet Cell Tumor, Prostate Carcinoma, Skin Squamous Cell Carcinoma, Stomach Adenocarcinoma, Testicular Seminoma. Mouse controls: Squamous Cell Carcinoma.
Uses:	IHC - Paraffin (1:100), Immunofluorescence (1:50 - 1:500) (Optimal dilution to be determined by the researcher)
Size:	50 µl
Manufacturer:	Bethyl Laboratories, Inc.

Immunohistochemistry Image:



Human Testis: Formalin-Fixed, Paraffin-Embedded (FFPE)

Requested From:

Japan

Laboratory Reagent For In Vitro Research Use Only

Not for resale without prior written consent from LifeSpan BioSciences, Inc.

Created on 9/23/2014

© 2014 LifeSpan BioSciences