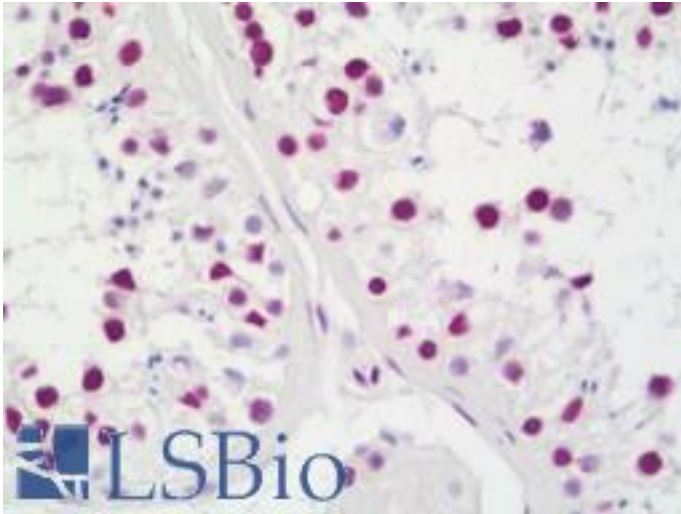


**TAF15 Rabbit anti-Human Polyclonal (aa200-250) Antibody - LS-B11038 - LSBio**

<b>CatalogID:</b>	LS-B11038
<b>Validation:</b>	This antibody replaces catalog number LS-C286368. It has been validated for use in the following assays: IHC-P.
<b>Target:</b>	TAF15 RNA polymerase II, TATA box binding protein (TBP)-associated factor, 68kDa
<b>Synonyms:</b>	TAF15 Antibody, RBP56 Antibody, RBP56/CSMF fusion Antibody, RNA-binding protein 56 Antibody, TAFII68 Antibody, TAF2N Antibody, TBP-associated factor 15 Antibody, HTAFII68 Antibody, TAF(II)68 Antibody
<b>Host</b>	TAF15 antibody was produced in Rabbit
<b>Clonality:</b>	Polyclonal
<b>Isotype:</b>	IgG
<b>Immunogen Species:</b>	TAF15 antibody was raised against Human
<b>Specificity:</b>	Region between residue 200 and 250 of human TAFII68 using the numbering given in Swiss-Prot entry Q92804 (GenelD 8148).
<b>Epitope:</b>	aa200-250
<b>Reactivity:</b>	Human
<b>Purification:</b>	Immunoaffinity purified
<b>Presentation:</b>	Tris-buffered saline, 0.1% BSA, 0.09% sodium azide.
<b>Recommended Storage:</b>	Store at 2-8°C for up to 1 year.
<b>Usage Summary:</b>	Immunohistochemistry: Antigen retrieval is recommended. Antigen retrieval with citrate buffer will enhance staining. Likely to work with frozen sections. In some cases, the antibody may be diluted further than indicated. Human controls: Breast Carcinoma, Colon Carcinoma, Laryngeal Squamous Cell Carcinoma, Ovarian Carcinoma, Skin Basal Cell Carcinoma, Stomach Adenocarcinoma, Testicular Seminoma.
<b>Uses:</b>	IHC - Paraffin (1:100), Immunofluorescence (1:50 - 1:500) (Optimal dilution to be determined by the researcher)
<b>Size:</b>	50 µl
<b>Manufacturer:</b>	Bethyl Laboratories, Inc.

**Immunohistochemistry Image:**



Human Testis: Formalin-Fixed, Paraffin-Embedded (FFPE)

**Requested From:**

Japan

Laboratory Reagent For In Vitro Research Use Only

Not for resale without prior written consent from LifeSpan BioSciences, Inc.

Created on 9/23/2014

© 2014 LifeSpan BioSciences