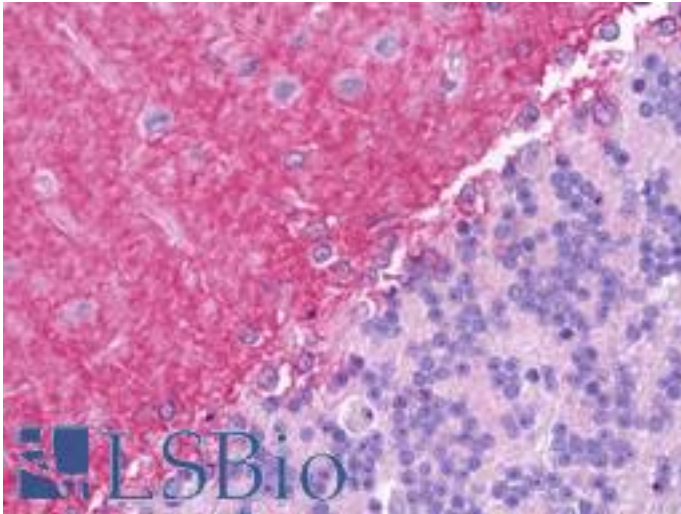


JAG1 / Jagged 1 Goat anti-Human Polyclonal (aa1197-1210) Antibody - LS-B11020 - LSBio	
CatalogID:	LS-B11020
Validation:	This antibody replaces catalog number LS-C205029. It has been validated for use in the following assays: IHC-P.
Target:	jagged 1 (JAG1)
Synonyms:	JAG1 Antibody, AGS Antibody, AHD Antibody, Alagille syndrome Antibody, CD339 antigen Antibody, HJ1 Antibody, Jagged1 Antibody, JAGL1 Antibody, Jagged Antibody, Jagged 1 Antibody, Protein jagged-1 Antibody, AWS Antibody, CD339 Antibody, Soluble protein jagged Antibody
Host	JAG1 antibody was produced in Goat
Clonality:	Polyclonal
Immunogen Species:	JAG1 / Jagged 1 antibody was raised against Human
Antigen Type:	Synthetic peptide
Immunogen:	JAG1 / Jagged 1 antibody was raised against synthetic peptide C-TNKQDNRDLESAQS from the C-terminus of human JAG1 / Jagged 1 (NP_000205.1). Percent identity by BLAST analysis: Human, Chimpanzee, Gorilla, Gibbon, Monkey, Mouse, Rat, Ferret, Sheep, Bovine, Bat, Elephant, Panda, Rabbit, Horse, Pig, Guinea pig, Turkey, Zebra finch, Chicken, Platypus, Lizard (100%); Xenopus, Zebrafish (93%); Medaka, Pufferfish (86%).
Specificity:	Human JAG1 / Jagged 1
Epitope:	aa1197-1210
Reactivity:	Human
Purification:	Immunoaffinity purified
Presentation:	Tris saline, pH 7.3, 0.5% BSA, 0.02% sodium azide
Recommended Storage:	Store at -20°C. Minimize freezing and thawing.
Usage Summary:	Peptide ELISA: antibody detection limit dilution 1:8000. IHC: Recommended concentration, 5 ug/ml.
Uses:	IHC - Paraffin (5 µg/ml), ELISA (1:8000) (Optimal dilution to be determined by the researcher)
Size:	50 µg
Concentration:	0.5 mg/ml

Immunohistochemistry Image:



Human Brain, Cerebellum: Formalin-Fixed, Paraffin-Embedded (FFPE)

Requested From:

Japan

Laboratory Reagent For In Vitro Research Use Only

Not for resale without prior written consent from LifeSpan BioSciences, Inc.

Created on 9/23/2014

© 2014 LifeSpan BioSciences