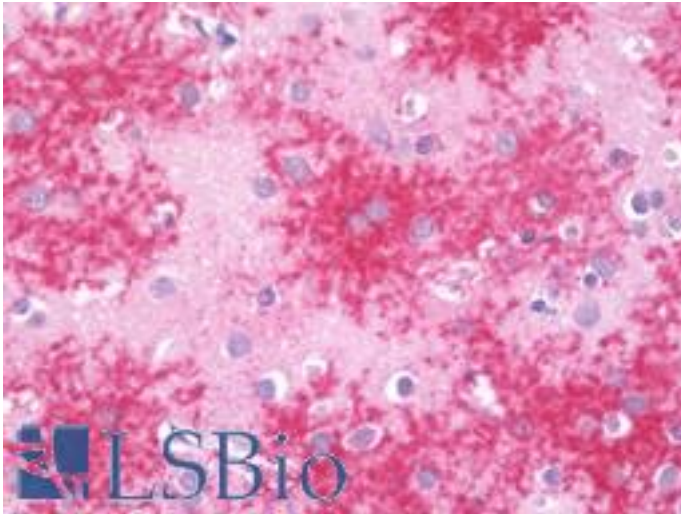


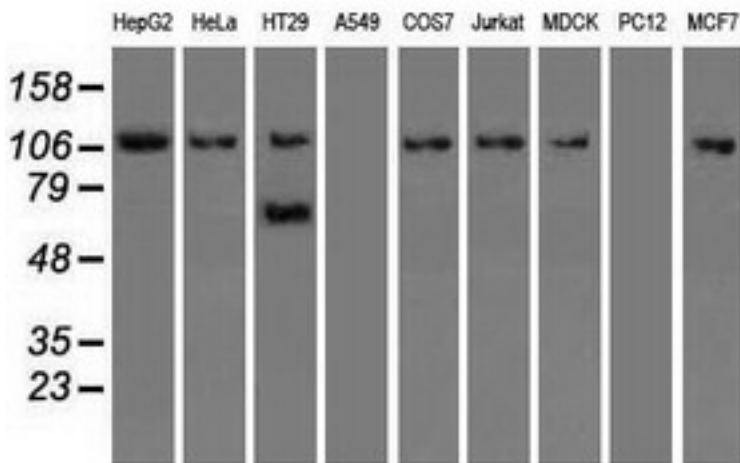
SIGLEC9 / SIGLEC-9 Mouse anti-Human Monoclonal (8F7) Antibody - LS-B11017 - LSBio	
CatalogID:	LS-B11017
Validation:	This antibody replaces catalog number LS-C114488. It has been validated for use in the following assays: IHC-P.
Target:	sialic acid binding Ig-like lectin 9 (SIGLEC9)
Synonyms:	SIGLEC9 Antibody, CDw329 Antibody, CD329 Antibody, Protein FOAP-9 Antibody, FOAP-9 Antibody, OBBP-LIKE Antibody, Siglec-9 Antibody
Host	SIGLEC9 antibody was produced in Mouse
Clonality:	Monoclonal
Isotype:	IgG1
Clone Name:	8F7
Immunogen Species:	SIGLEC9 / SIGLEC-9 antibody was raised against Human
Antigen Type:	Recombinant protein
Immunogen:	SIGLEC9 / SIGLEC-9 antibody was raised against full length human recombinant protein of human SIGLEC9 (NP_055256) produced in HEK293T cell.
Specificity:	Human Siglec-9
Reactivity:	Human, Monkey, Dog
Purification:	Protein A/G purified
Presentation:	PBS, pH 7.3, 1% BSA, 50% glycerol, 0.02% sodium azide
Recommended Storage:	Store at -20°C. Minimize freezing and thawing.
Usage Summary:	Concentration: 0.5-1.0 mg/ml (Lot dependent)
Uses:	IHC - Paraffin (10 µg/ml), Western blot (1:2500 - 1:5000) (Optimal dilution to be determined by the researcher)
Size:	100 µl
Concentration:	0.5 mg/ml

Immunohistochemistry Image:



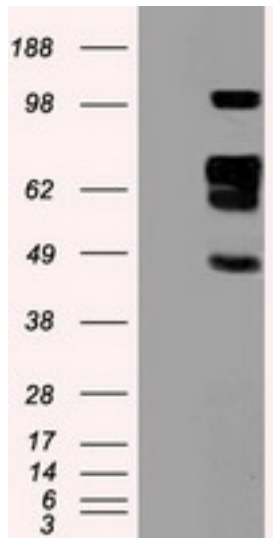
Human Brain, Cortex: Formalin-Fixed, Paraffin-Embedded (FFPE)

Western Blot Image:



Western blot of extracts (35 ug) from 9 different cell lines by using anti-SIGLEC9 monoclonal antibody.

Western Blot Image:



HEK293T cells were transfected with the pCMV6-ENTRY control (Left lane) or pCMV6-ENTRY SIGLEC9 (Right lane) cDNA for 48 hrs and lysed. Equivalent amounts of cell lysates (5 ug per lane) were separated by SDS-PAGE and immunoblotted with anti-SIGLEC9.

Requested From:

Japan

Laboratory Reagent For In Vitro Research Use Only

Not for resale without prior written consent from LifeSpan BioSciences, Inc.

Created on 9/23/2014

© 2014 LifeSpan BioSciences