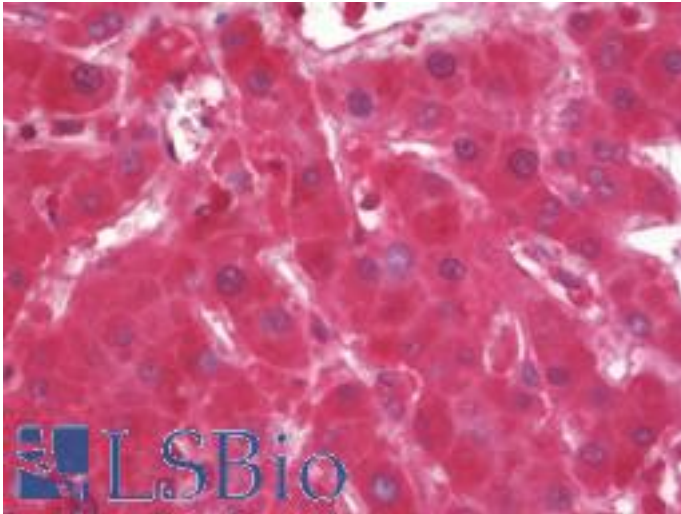


Complement C1s Mouse anti-Human Monoclonal (2D11) Antibody - LS-B11015 - LSBio

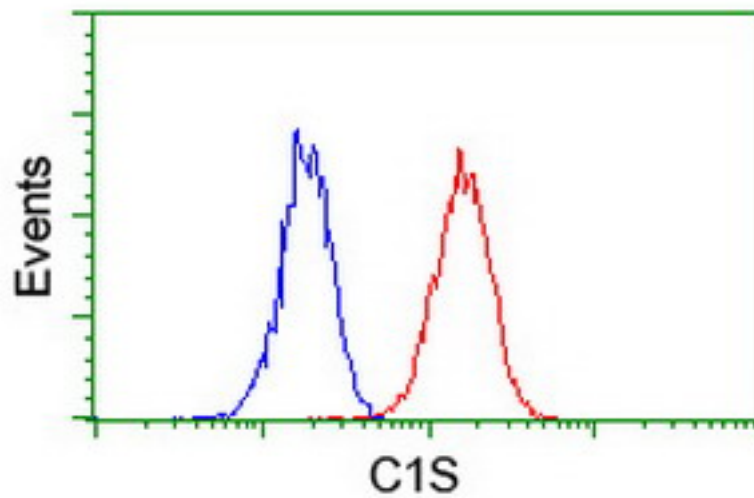
CatalogID:	LS-B11015
Validation:	This antibody replaces catalog number LS-C173719. It has been validated for use in the following assays: IHC-P.
Target:	complement component 1, s subcomponent (C1S)
Synonyms:	C1S Antibody, C1 esterase Antibody, ComplementC1S Antibody, Complement 1s Antibody, Complement C1s subcomponent Antibody
Family / Subfamily:	Protease / Serine S1
Host	C1S antibody was produced in Mouse
Clonality:	Monoclonal
Isotype:	IgG2a
Clone Name:	2D11
Immunogen Species:	Complement C1s antibody was raised against Human
Antigen Type:	Recombinant protein
Immunogen:	Complement C1s antibody was raised against full length human recombinant protein of human C1S(NP_001725) produced in HEK293T cell.
Specificity:	Human ComplementC1S
Reactivity:	Human
Purification:	Protein A/G purified
Presentation:	PBS, pH 7.3, 1% BSA, 50% glycerol, 0.02% sodium azide
Recommended Storage:	Store at -20°C. Minimize freezing and thawing.
Uses:	IHC - Paraffin (10 µg/ml), Western blot (1:2000), Flow Cytometry (1:100) (Optimal dilution to be determined by the researcher)
Size:	50 µl
Concentration:	1.2 mg/ml

Immunohistochemistry Image:



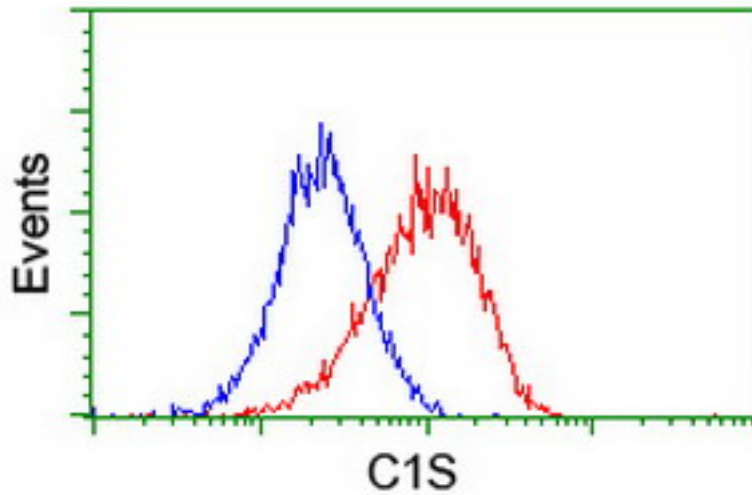
Human Liver: Formalin-Fixed, Paraffin-Embedded (FFPE)

Flow Cytometry Image:



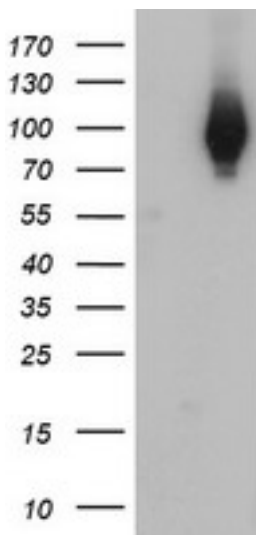
Flow cytometry of Jurkat cells, using anti-C1S antibody (Red), compared to a nonspecific negative control antibody (Blue).

Flow Cytometry Image:



Flow cytometry of HeLa cells, using anti-C1S antibody (Red), compared to a nonspecific negative control antibody (Blue).

Western Blot Image:



HEK293T cells were transfected with the pCMV6-ENTRY control (Left lane) or pCMV6-ENTRY C1S (Right lane) cDNA for 48 hrs and lysed. Equivalent amounts of cell lysates (5 ug per lane) were separated by SDS-PAGE and immunoblotted with anti-C1S.

Requested From:

Japan

Laboratory Reagent For In Vitro Research Use Only

Not for resale without prior written consent from LifeSpan BioSciences, Inc.

Created on 9/23/2014

© 2014 LifeSpan BioSciences