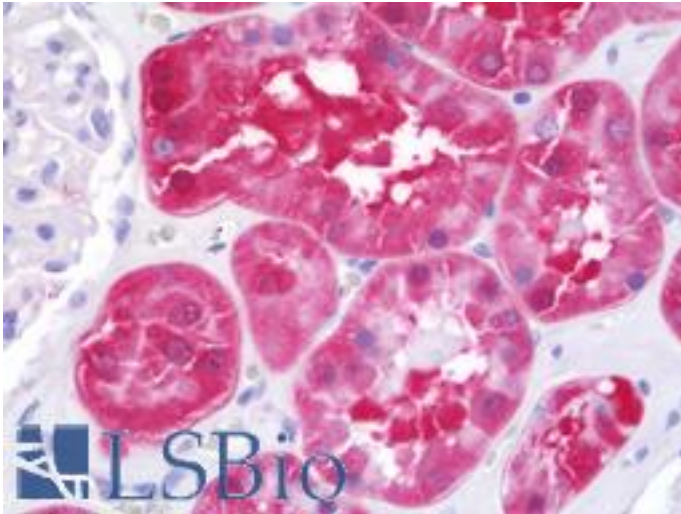


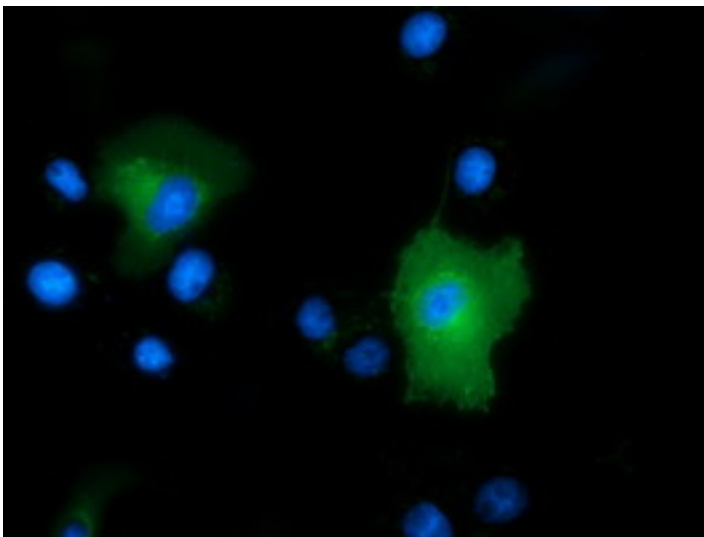
PEPD / PROLIDASE Mouse anti-Human Monoclonal (1B7) Antibody - LS-B11014 - LSBio	
CatalogID:	LS-B11014
Validation:	This antibody replaces catalog number LS-C115644. It has been validated for use in the following assays: IHC-P.
Target:	peptidase D (PEPD)
Synonyms:	PEPD Antibody, Aminoacyl-L-proline hydrolase Antibody, Imidodipeptidase Antibody, PRD Antibody, PROLIDASE Antibody, X-Pro dipeptidase Antibody, Xaa-Pro dipeptidase Antibody, Peptidase D Antibody, Proline dipeptidase Antibody
Family / Subfamily:	Exopeptidase / Metallopeptidase M24B
Host	PEPD antibody was produced in Mouse
Clonality:	Monoclonal
Isotype:	IgG1
Clone Name:	1B7
Immunogen Species:	PEPD / PROLIDASE antibody was raised against Human
Antigen Type:	Recombinant protein
Immunogen:	PEPD / PROLIDASE antibody was raised against full length human recombinant protein of human PEPD (NP_000276) produced in HEK293T cell.
Specificity:	Human PEPD / PROLIDASE
Reactivity:	Human
Purification:	Protein A/G purified
Presentation:	PBS, pH 7.3, 1% BSA, 50% glycerol, 0.02% sodium azide
Recommended Storage:	Store at -20°C. Minimize freezing and thawing.
Usage Summary:	Concentration: 0.62 mg/ml (Lot dependent)
Uses:	IHC - Paraffin (10 µg/ml), Immunofluorescence (1:100), Western blot (1:2000), Flow Cytometry (1:100) (Optimal dilution to be determined by the researcher)
Size:	100 µl
Concentration:	0.62 mg/ml

Immunohistochemistry Image:



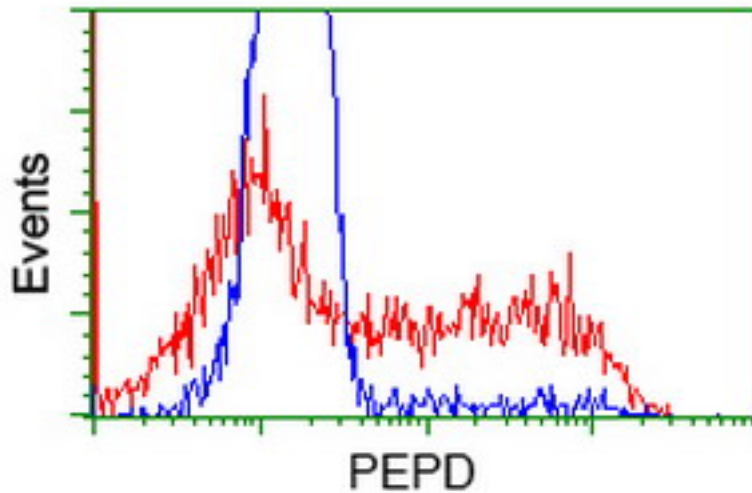
Human Kidney: Formalin-Fixed, Paraffin-Embedded (FFPE)

Immunofluorescence Image:



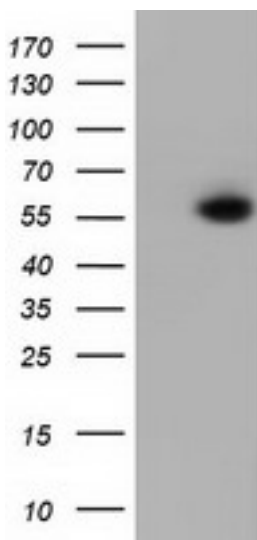
Anti-PEPD mouse monoclonal antibody immunofluorescent staining of COS7 cells transiently transfected by pCMV6-ENTRY PEPD.

Flow Cytometry Image:



HEK293T cells transfected with either pCMV6-ENTRY PEPD (Red) or empty vector control plasmid (Blue) were immunostained by anti-PEPD antibody, and then analyzed by flow cytometry.

Western Blot Image:



HEK293T cells were transfected with the pCMV6-ENTRY control (Left lane) or pCMV6-ENTRY PEPD (Right lane) cDNA for 48 hrs and lysed. Equivalent amounts of cell lysates (5 ug per lane) were separated by SDS-PAGE and immunoblotted with anti-PEPD.

Requested From:

Japan

Laboratory Reagent For In Vitro Research Use Only

Not for resale without prior written consent from LifeSpan BioSciences, Inc.

Created on 9/23/2014

© 2014 LifeSpan BioSciences