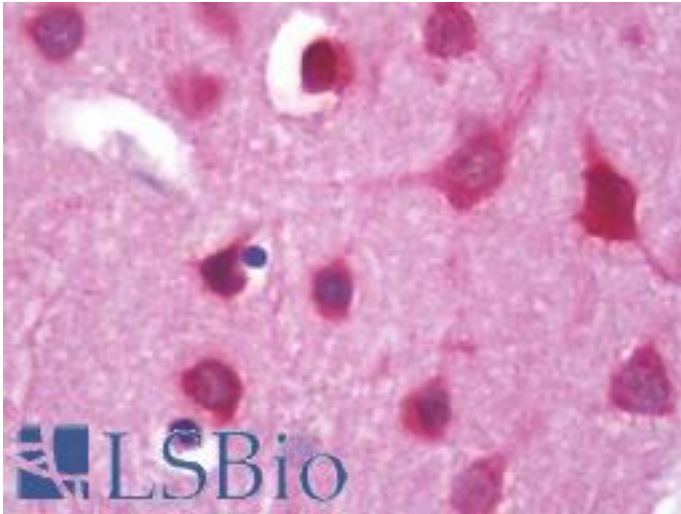


HTT / Huntingtin Rabbit anti-Human Polyclonal (C-Terminus) Antibody - LS-B11011 - LSBio	
<b>CatalogID:</b>	LS-B11011
<b>Validation:</b>	This antibody replaces catalog number LS-C209360. It has been validated for use in the following assays: IHC-P.
<b>Target:</b>	huntingtin (HTT)
<b>Synonyms:</b>	HTT Antibody, Huntingtin Antibody, Huntington disease protein Antibody, IT15 Antibody, HD Antibody, HD protein Antibody
<b>Family / Subfamily:</b>	Hungtintin / Not assigned-Other
<b>Host</b>	HTT antibody was produced in Rabbit
<b>Clonality:</b>	Polyclonal
<b>Isotype:</b>	IgG
<b>Immunogen Species:</b>	HTT / Huntingtin antibody was raised against Human
<b>Antigen Type:</b>	Synthetic peptide
<b>Immunogen:</b>	HTT / Huntingtin antibody was raised against huntingtin affinity purified antibody was prepared from whole rabbit serum produced by repeated immunizations with a synthetic peptide corresponding to the C-terminus of human Huntingtin.
<b>Specificity:</b>	This antibody is specific towards HTT. A BLAST analysis was used to suggest cross-reactivity with Human, Mouse, and Rat based on 100% sequence homology. Cross-reactivity with HTT from other sources has not been determined.
<b>Epitope:</b>	C-Terminus
<b>Reactivity:</b>	Human, Mouse, Rat
<b>Purification:</b>	Immunoaffinity purified
<b>Presentation:</b>	0.02 M potassium phosphate, 0.15 M sodium chloride, pH 7.2, 30% glycerol, sterile filtered
<b>Recommended Storage:</b>	Short term 4°C, long term aliquot and store at -20°C, avoid freeze thaw cycles. Centrifuge product before removing cap. Only dilute immediately prior to use.
<b>Usage Summary:</b>	Anti-Huntington antibody is useful for Immunohistochemistry, ELISA, and Western Blot. Expect a band approximately ~350 kD corresponding to the appropriate cell lysate or extract.
<b>Uses:</b>	IHC - Paraffin (5 µg/ml), Immunofluorescence (1:100 - 1:500), Western blot (0.1 µg/ml), ELISA (1:20000 - 1:60000) (Optimal dilution to be determined by the researcher)
<b>Size:</b>	50 µg
<b>Concentration:</b>	1.1 mg/ml

**Immunohistochemistry Image:**



Human Brain, Cortex: Formalin-Fixed, Paraffin-Embedded (FFPE)

**Requested From:**

Japan

Laboratory Reagent For In Vitro Research Use Only

Not for resale without prior written consent from LifeSpan BioSciences, Inc.

Created on 9/23/2014

© 2014 LifeSpan BioSciences