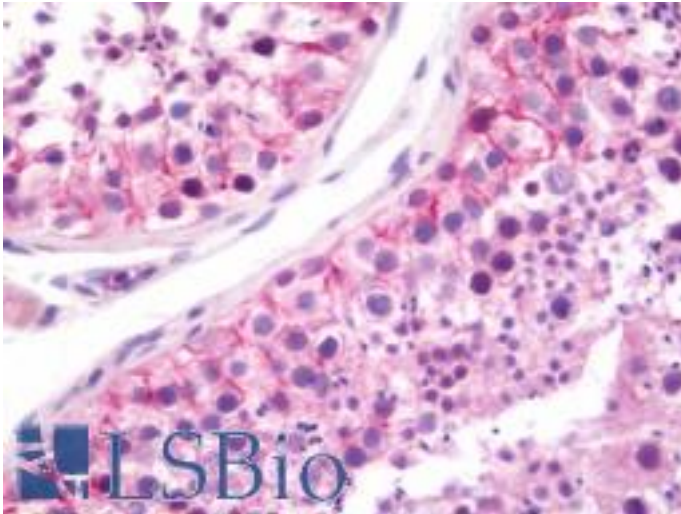


TJP1 / ZO-1 Rabbit anti-Human Polyclonal (aa1-296) Antibody - LS-B11010 - LSBio

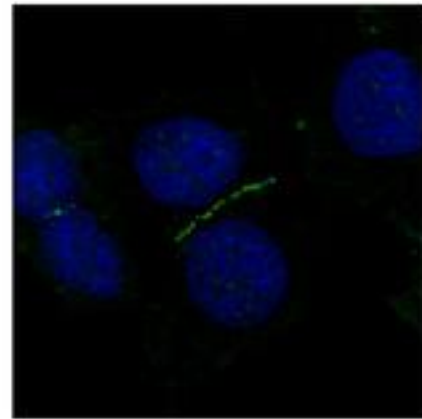
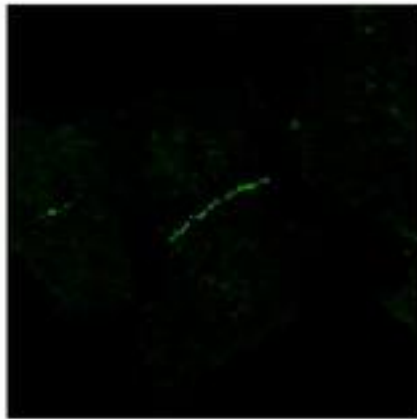
CatalogID:	LS-B11010
Validation:	This antibody replaces catalog number LS-C186010. It has been validated for use in the following assays: IHC-P.
Target:	tight junction protein 1 (TJP1)
Synonyms:	TJP1 Antibody, ZO-1 Antibody, Zona occludens protein 1 Antibody, Zona occludens 1 Antibody, Zonula occludens protein 1 Antibody, Tight junction protein 1 Antibody, ZO1 Antibody, Tight junction protein ZO-1 Antibody, Zonula occludens 1 protein Antibody
Family / Subfamily:	Occludin / Not assigned-Occludin
Host	TJP1 antibody was produced in Rabbit
Clonality:	Polyclonal
Isotype:	IgG
Immunogen Species:	TJP1 / ZO-1 antibody was raised against Human
Antigen Type:	Recombinant protein
Immunogen:	TJP1 / ZO-1 antibody was raised against recombinant fragment corresponding to a region within amino acids 1 and 296 of ZO-1 (SwissProt Q07157).
Specificity:	Human ZO-1
Epitope:	aa1-296
Reactivity:	Human
Purification:	Immunoaffinity purified
Presentation:	0.1 M Tris-glycine, pH 7.0, 10% glycerol, 0.01% Thimerosal
Recommended Storage:	Keep as concentrated solution. Aliquot and store at -20°C or below. Avoid multiple freeze-thaw cycles.
Uses:	IHC - Paraffin (10 µg/ml), ICC (1:100 - 1:1000), Western blot (1:500 - 1:3000) (Optimal dilution to be determined by the researcher)
Size:	50 µl
Concentration:	1 mg/ml

Immunohistochemistry Image:



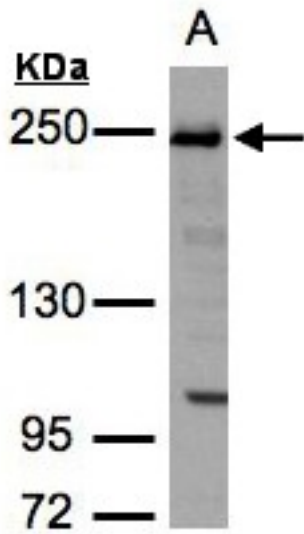
Human Testis: Formalin-Fixed, Paraffin-Embedded (FFPE)

Immunocytochemistry Image:



ZO-1 antibody, N-term detects TJP1 protein at junction by confocal immunofluorescent analysis. A431 cells were fixed in 4% paraformaldehyde at RT for 15 min. TJP1 protein stained by ZO-1 antibody, N-term diluted at 1:500.

Western Blot Image:



Sample (30 ug whole cell lysate). A: H1299. 5% SDS PAGE. ZO-1 antibody diluted at 1:3000

Requested From:

Japan

Laboratory Reagent For In Vitro Research Use Only

Not for resale without prior written consent from LifeSpan BioSciences, Inc.

Created on 9/23/2014

© 2014 LifeSpan BioSciences