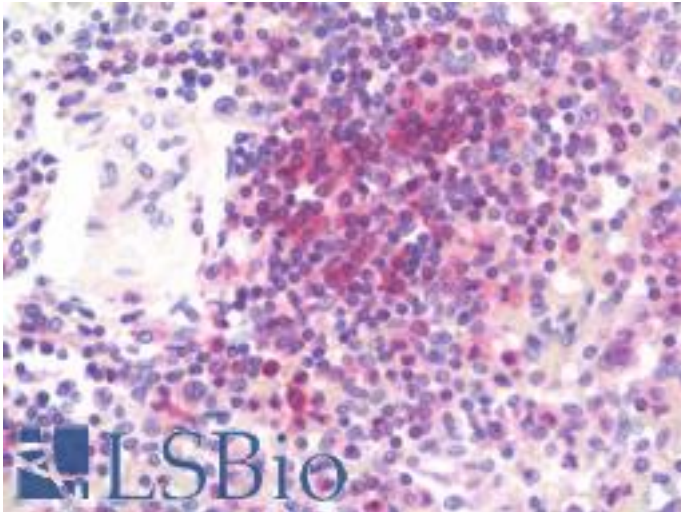


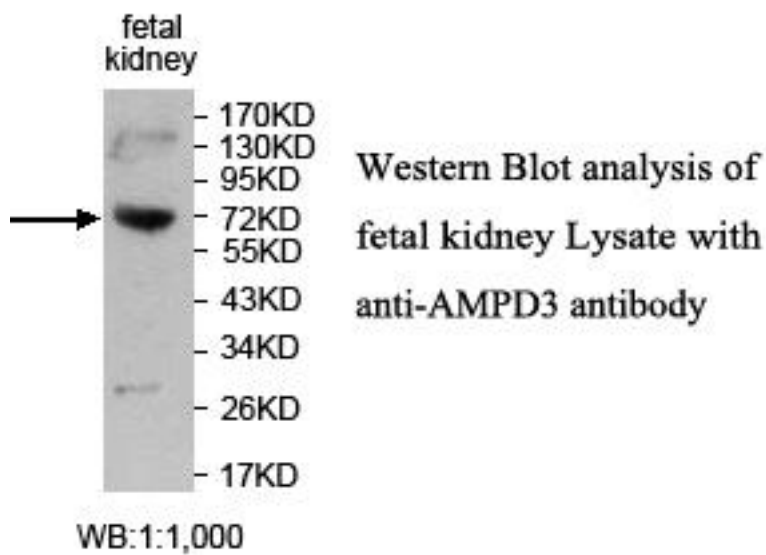
AMPD3 Rabbit anti-Human Polyclonal (aa541-776) Antibody - LS-B11007 - LSBio	
<b>CatalogID:</b>	LS-B11007
<b>Validation:</b>	This antibody replaces catalog number LS-C178644. It has been validated for use in the following assays: IHC-P.
<b>Target:</b>	adenosine monophosphate deaminase 3 (AMPD3)
<b>Synonyms:</b>	AMPD3 Antibody, AMP deaminase 3 Antibody, AMP aminohydrolase Antibody, Erythrocyte type AMP deaminase Antibody, AMP deaminase isoform E Antibody, Myoadenylate deaminase Antibody, Erythrocyte AMP deaminase Antibody
<b>Host</b>	AMPD3 antibody was produced in Rabbit
<b>Clonality:</b>	Polyclonal
<b>Immunogen Species:</b>	AMPD3 antibody was raised against Human
<b>Antigen Type:</b>	Recombinant protein
<b>Immunogen:</b>	AMPD3 antibody was raised against a recombinant human AMPD3 protein541-776aa (BC126118).
<b>Specificity:</b>	Human AMPD3.
<b>Epitope:</b>	aa541-776
<b>Reactivity:</b>	Human
<b>Purification:</b>	Affinity purified
<b>Presentation:</b>	PBS, pH 7.4, 0.02% sodium azide
<b>Recommended Storage:</b>	Stable for several weeks at 4C as an undiluted liquid. Dilute only prior to immediate use. For extended storage, aliquot contents and freeze at -20C or below. Avoid cycles of freezing and thawing.
<b>Uses:</b>	IHC - Paraffin (5 µg/ml), Western blot (1:1000 - 1:2000), ELISA (1:20000 - 1:80000) (Optimal dilution to be determined by the researcher)
<b>Size:</b>	50 µg
<b>Concentration:</b>	1 mg/ml

**Immunohistochemistry Image:**



Human Spleen: Formalin-Fixed, Paraffin-Embedded (FFPE)

**Western Blot Image:**



Requested From:

Japan

Laboratory Reagent For In Vitro Research Use Only

Not for resale without prior written consent from LifeSpan BioSciences, Inc.

Created on 9/23/2014

© 2014 LifeSpan BioSciences