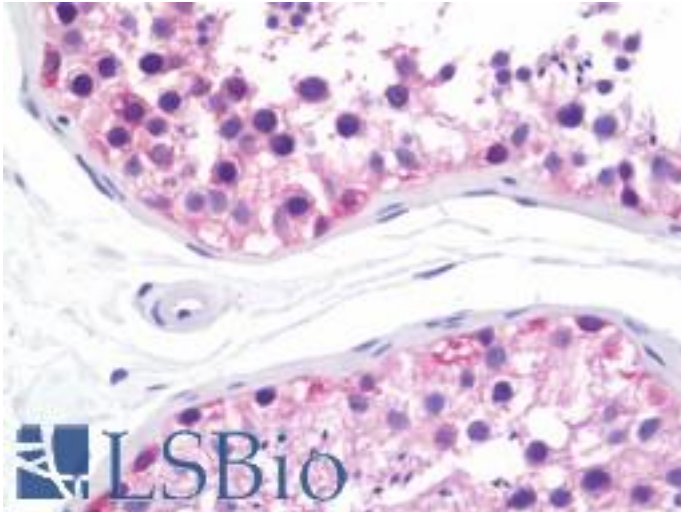


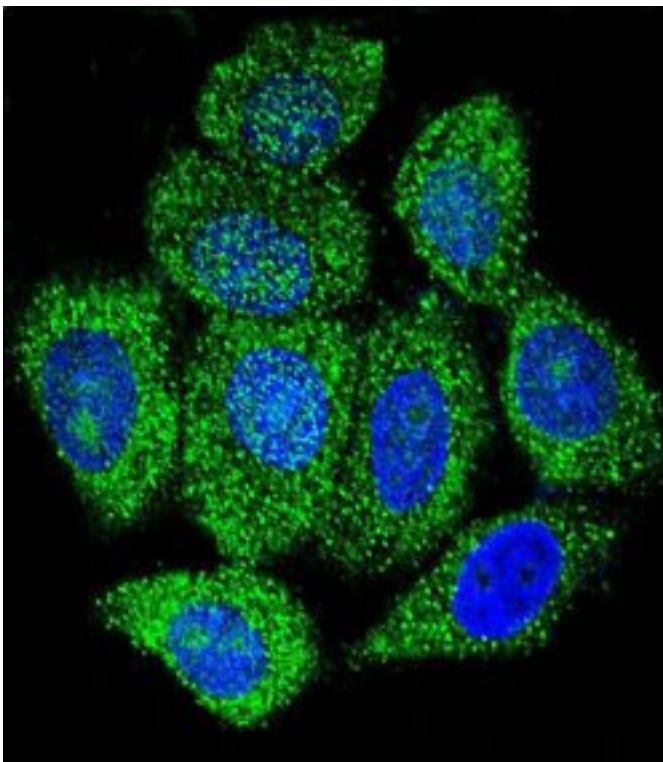
IMPDH1 Rabbit anti-Human Polyclonal (aa487-514) Antibody - LS-B11006 - LSBio	
CatalogID:	LS-B11006
Validation:	This antibody replaces catalog number LS-C165229. It has been validated for use in the following assays: IHC-P.
Target:	IMP (inosine 5'-monophosphate) dehydrogenase 1 (IMPDH1)
Synonyms:	IMPDH1 Antibody, IMP dehydrogenase 1 Antibody, IMPD 1 Antibody, IMPDH 1 Antibody, IMPD1 Antibody, LCA11 Antibody, IMPD Antibody, IMPDH-I Antibody, SWSS2608 Antibody, RP10 Antibody
Host	IMPDH1 antibody was produced in Rabbit
Clonality:	Polyclonal
Immunogen Species:	IMPDH1 antibody was raised against Human
Antigen Type:	Synthetic peptide
Immunogen:	IMPDH1 antibody was raised against kLH-conjugated synthetic peptide from C-terminal region of human IMPDH1.
Specificity:	Human IMPDH1
Epitope:	aa487-514
Reactivity:	Human
Purification:	Immunoaffinity purified
Presentation:	PBS, 0.09% sodium azide
Recommended Storage:	Maintain refrigerated at 2-8°C for up to 6 months. For long term storage store at -20°C.
Uses:	IHC - Paraffin (1:50), Immunofluorescence (1:10 - 1:50), Western blot (1:1000) (Optimal dilution to be determined by the researcher)
Size:	200 µl

Immunohistochemistry Image:



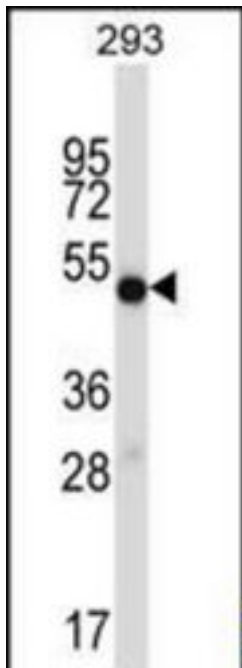
Human Testis: Formalin-Fixed, Paraffin-Embedded (FFPE)

Immunofluorescence Image:



Confocal immunofluorescence of IMPDH1 Antibody (C-term) with HeLa cell followed by Alexa Fluor 488-conjugated goat anti-rabbit IgG (green). DAPI was used to stain the cell nuclear (blue).

Western Blot Image:



IMPDH1 Antibody (C-term) Western blot of 293 cell line lysates (35 ug/lane). This demonstrates the IMPDH1 antibody detected the IMPDH1 protein (arrow).

Requested From:

Japan

Laboratory Reagent For In Vitro Research Use Only

Not for resale without prior written consent from LifeSpan BioSciences, Inc.

Created on 9/23/2014

© 2014 LifeSpan BioSciences