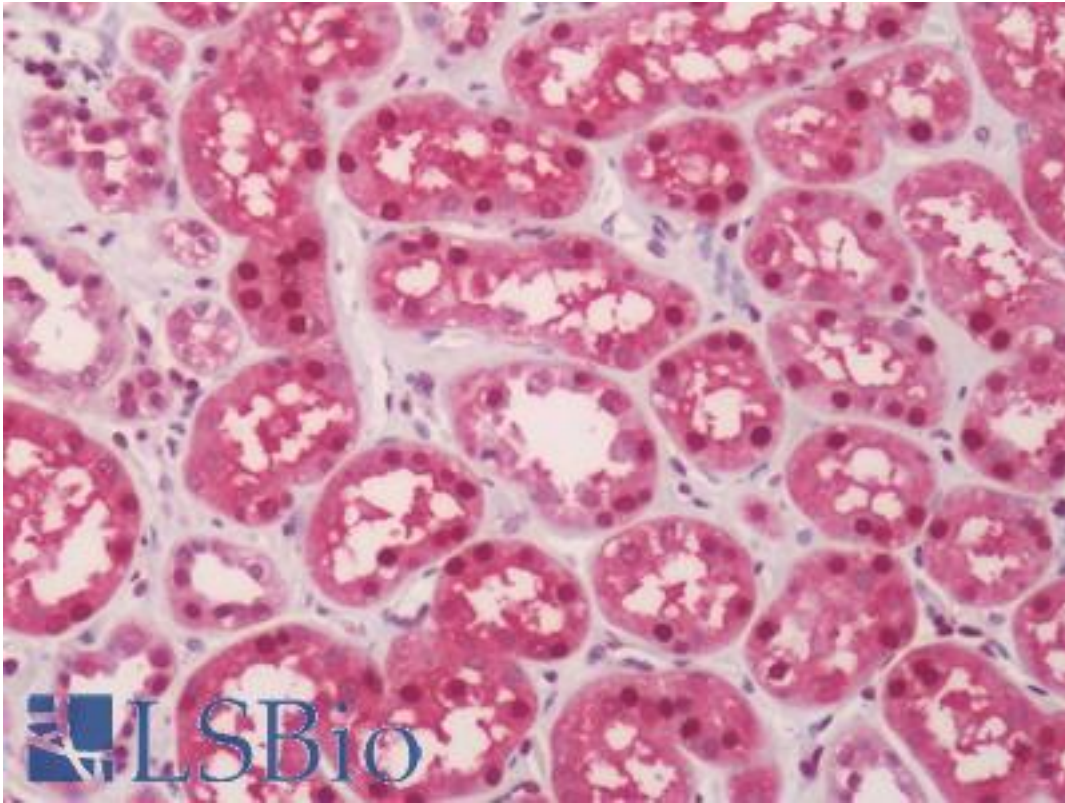


GAPDH Mouse anti-Rabbit Monoclonal (6C5) Antibody - LS-B11003 - LSBio

CatalogID:	LS-B11003
Validation:	This antibody replaces catalog number LS-C188573. It has been validated for use in the following assays: IHC-P.
Target:	glyceraldehyde-3-phosphate dehydrogenase (GAPDH)
Synonyms:	GAPDH Antibody, A1 40 kd subunit Antibody, Activator 1 40 kd subunit Antibody, G3PD Antibody, GAPD Antibody, G3pdh Antibody, Rfc40 Antibody, Rf-c 40 kd subunit Antibody
Host	GAPDH antibody was produced in Mouse
Clonality:	Monoclonal
Isotype:	IgG1
Clone Name:	6C5
Immunogen Species:	GAPDH antibody was raised against Rabbit
Antigen Type:	Purified protein
Immunogen:	GAPDH antibody was raised against rabbit muscle GAPDH.
Specificity:	Recognizes glyceraldehyde-3-phosphate dehydrogenase (GAPDH), a 36kD multifunctional protein whose main function is to catalyze the reversible oxidative phosphorylation of glyceraldehyde-3-phosphate, in conjunction with inorganic phosphate and nicotinamide adenine dinucleotide (NAD).
Reactivity:	Rabbit, Human, Monkey, Mouse, Rat, Bat, Cat, Dog, Pig, Sheep, Chicken, Xenopus, Fish, African green monkey, Green monkey, Tube-nosed bat
Purification:	Protein A purified
Presentation:	PBS, 0.09% sodium azide
Recommended Storage:	+4°C or -20°C, Avoid repeated freezing and thawing.
Uses:	IHC - Paraffin (10 µg/ml), IHC - Frozen, Immunofluorescence, Western blot, Immunoprecipitation, ELISA (Optimal dilution to be determined by the researcher)
Size:	100 µg
Concentration:	1 mg/ml

Immunohistochemistry Image:



Human Kidney: Formalin Fixed, Paraffin Embedded (FFPE)

Requested From:

Japan

Laboratory Reagent For In Vitro Research Use Only

Not for resale without prior written consent from LifeSpan BioSciences, Inc.

Created on 9/23/2014

© 2014 LifeSpan BioSciences