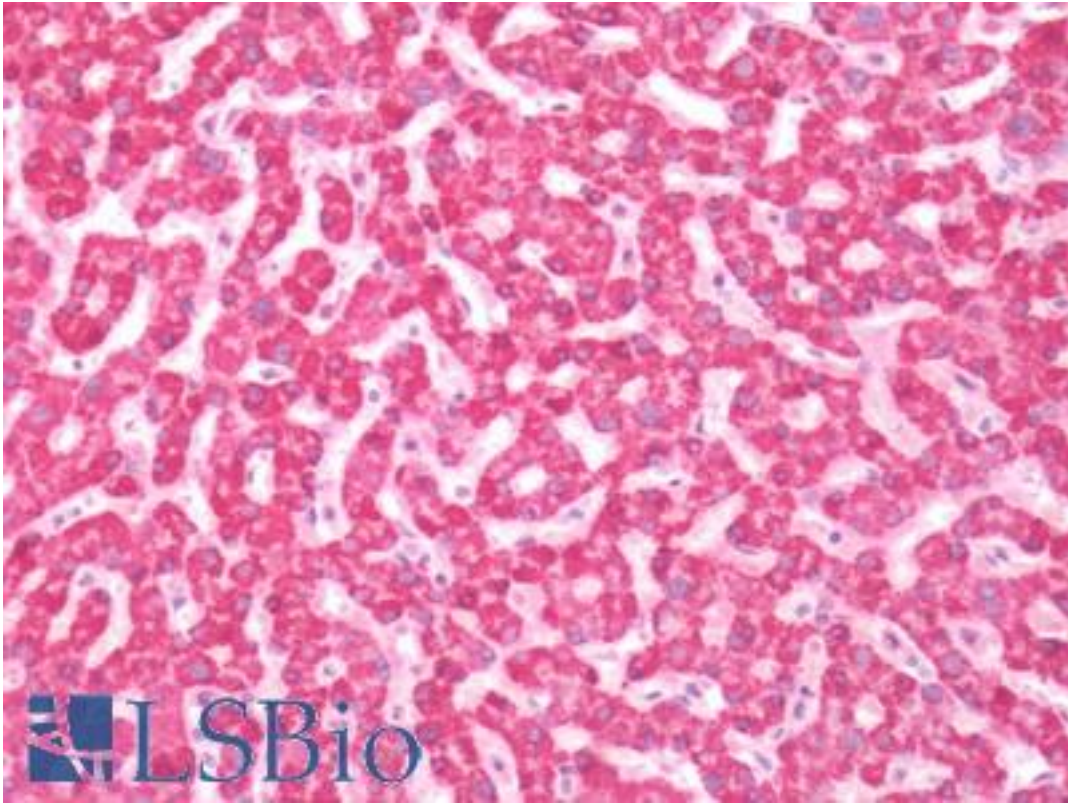


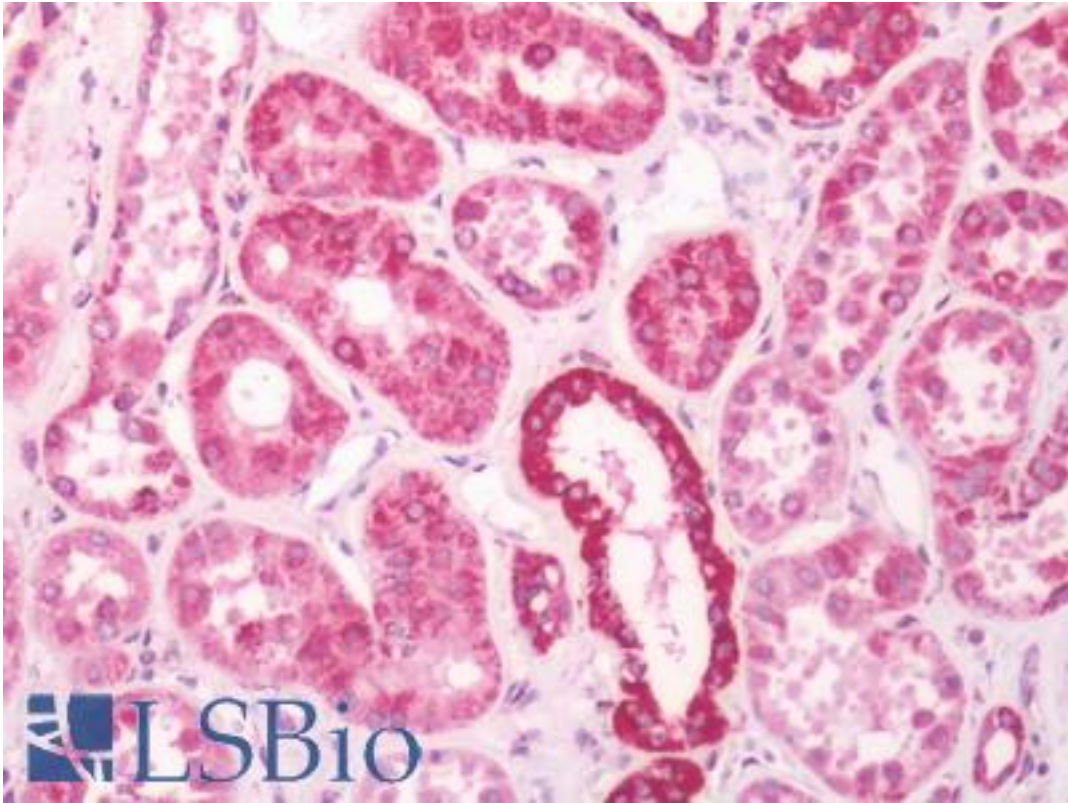
DEC R1 Rabbit anti-Human Polyclonal (aa1-335) Antibody - LS-B11000 - LSBio	
CatalogID:	LS-B11000
Validation:	This antibody replaces catalog number LS-C186086. It has been validated for use in the following assays: IHC-P.
Target:	2,4-dienoyl CoA reductase 1, mitochondrial (DEC R1)
Synonyms:	DEC R1 Antibody, 2,4-dienoyl-coa reductase Antibody, 4-enoyl-CoA reductase [NADPH] Antibody, 4-enoyl-CoA reductase Antibody, DEC R Antibody, NADPH Antibody, SDR18C1 Antibody
Host	DEC R1 antibody was produced in Rabbit
Clonality:	Polyclonal
Immunogen Species:	DEC R1 antibody was raised against Human
Antigen Type:	Recombinant protein
Immunogen:	DEC R1 antibody was raised against recombinant fragment corresponding to a region within amino acids 1 and 335 of DEC R1 (SwissProt Q16698). Percent identity by BLAST analysis: Human (100%); Rat (82%).
Specificity:	Human DEC R1
Epitope:	aa1-335
Reactivity:	Human, Mouse
Purification:	Immunoaffinity purified
Presentation:	0.1 M Tris-glycine, pH 7.0, 10% glycerol, 0.01% Thimerosal
Recommended Storage:	Keep as concentrated solution. Aliquot and store at -20°C or below. Avoid multiple freeze-thaw cycles.
Usage Summary:	IHC-paraffin: Suggested antigen retrieval using heat mediated 10 mM Citrate buffer (pH 6.0) or Tris-EDTA buffer (pH 8.0).
Uses:	IHC - Paraffin (5 µg/ml), ICC (1:100 - 1:1000), Western blot (1:5000 - 1:20000) (Optimal dilution to be determined by the researcher)
Size:	50 µl
Concentration:	1 mg/ml

Immunohistochemistry Image:



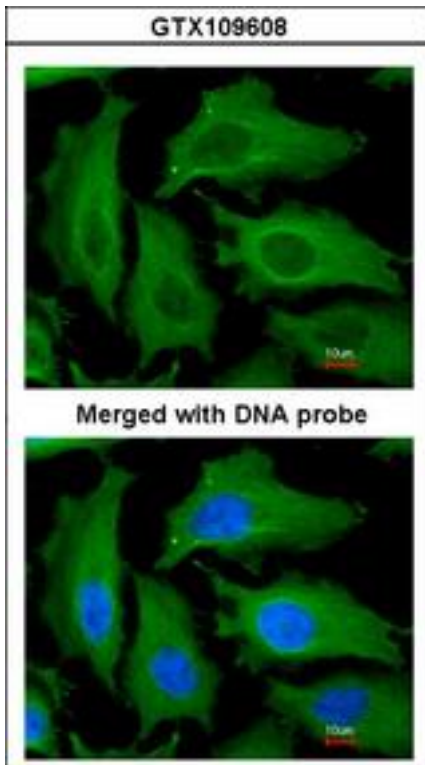
Human Liver: Formalin Fixed, Paraffin Embedded (FFPE)

Immunohistochemistry Image:



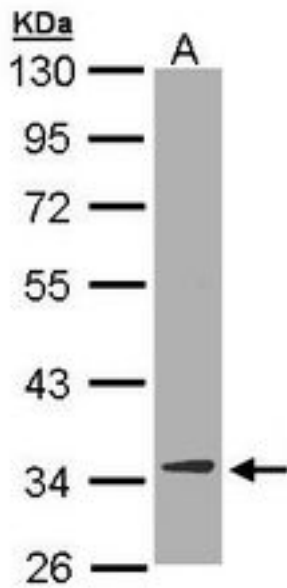
Human Kidney: Formalin Fixed, Paraffin Embedded (FFPE)

Immunocytochemistry Image:



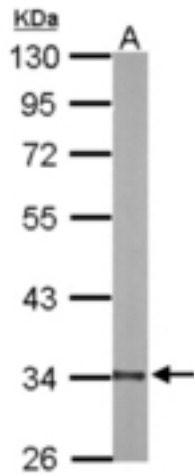
Immunofluorescence of paraformaldehyde-fixed HeLa using DECR1 antibody at 1:200 dilution.

Western Blot Image:



Sample (30 µg of whole cell lysate). A: Hep G2 . 10% SDS PAGE. DECR1 antibody diluted at 1:10000.

Western Blot Image:



Sample (20 ug of whole cell lysate). A: mouse liver. 10% SDS PAGE. DECR1 antibody diluted at 1:10000.

Requested From:

Japan

Laboratory Reagent For In Vitro Research Use Only

Not for resale without prior written consent from LifeSpan BioSciences, Inc.

Created on 9/23/2014

© 2014 LifeSpan BioSciences