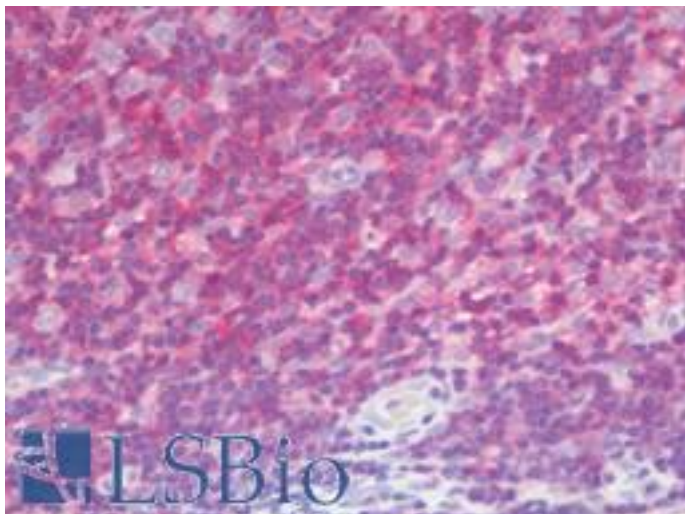


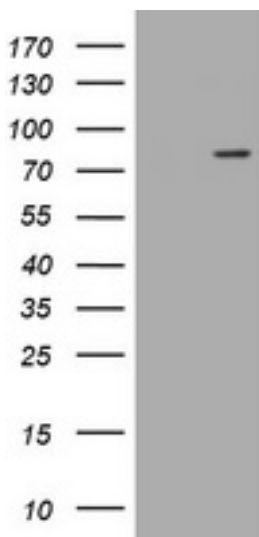
LRCH4 Mouse anti-Human Monoclonal (1F8) Antibody - LS-B10996 - LSBio	
CatalogID:	LS-B10996
Validation:	This antibody replaces catalog number LS-C174243. It has been validated for use in the following assays: IHC-P.
Target:	leucine-rich repeats and calponin homology (CH) domain containing 4 (LRCH4)
Synonyms:	LRCH4 Antibody, Leucine-rich neuronal protein Antibody, Leucine rich repeat neuronal 4 Antibody, PP14183 Antibody, LRN Antibody
Host	LRCH4 antibody was produced in Mouse
Clonality:	Monoclonal
Isotype:	IgG1
Clone Name:	1F8
Immunogen Species:	LRCH4 antibody was raised against Human
Antigen Type:	Recombinant protein
Immunogen:	LRCH4 antibody was raised against full length human recombinant protein of human LRCH4 (NP_002310) produced in HEK293T cell.
Specificity:	Human LRCH4
Reactivity:	Human
Purification:	Protein A/G purified
Presentation:	PBS, pH 7.3, 1% BSA, 50% glycerol, 0.02% sodium azide
Recommended Storage:	Store at -20°C. Minimize freezing and thawing.
Uses:	IHC - Paraffin (10 µg/ml), Western blot (1:2000) (Optimal dilution to be determined by the researcher)
Size:	50 µl
Concentration:	1 mg/ml

Immunohistochemistry Image:



Human Tonsil: Formalin-Fixed, Paraffin-Embedded (FFPE)

Western Blot Image:



HEK293T cells were transfected with the pCMV6-ENTRY control (Left lane) or pCMV6-ENTRY LRCH4 (Right lane) cDNA for 48 hrs and lysed. Equivalent amounts of cell lysates (5 ug per lane) were separated by SDS-PAGE and immunoblotted with anti-LRCH4.

Requested From:

Japan

Laboratory Reagent For In Vitro Research Use Only

Not for resale without prior written consent from LifeSpan BioSciences, Inc.

Created on 9/23/2014

© 2014 LifeSpan BioSciences