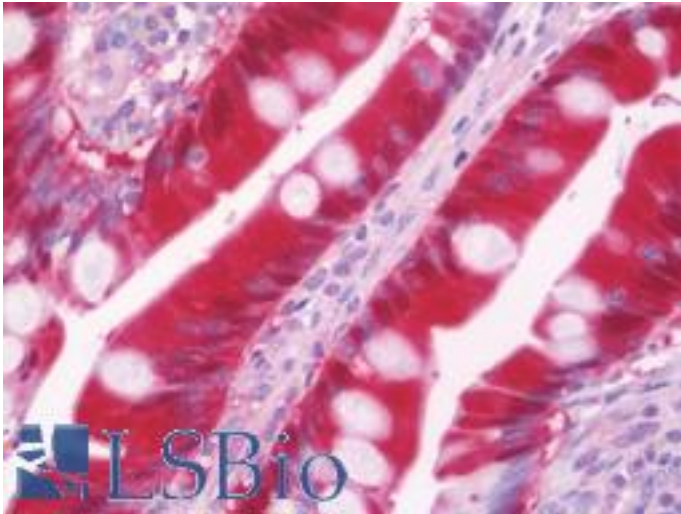


**CBR3 Mouse anti-Human Monoclonal (1G6) Antibody - LS-B10988 - LSBio**

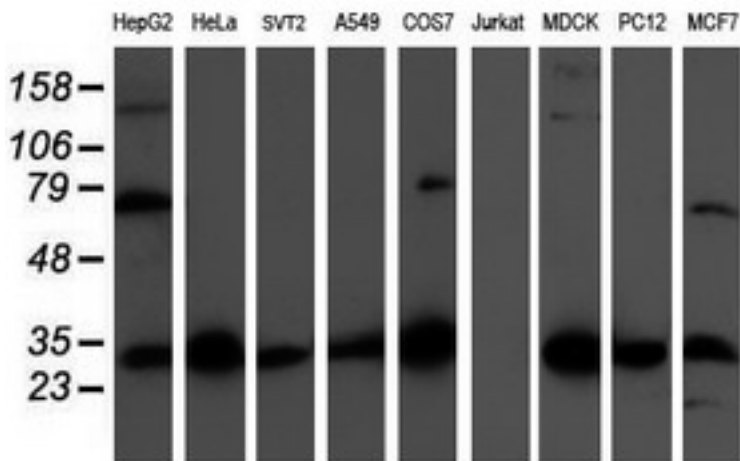
<b>CatalogID:</b>	LS-B10988
<b>Validation:</b>	This antibody replaces catalog number LS-C173143. It has been validated for use in the following assays: IHC-P.
<b>Target:</b>	carbonyl reductase 3 (CBR3)
<b>Synonyms:</b>	CBR3 Antibody, Carbonyl reductase [NADPH] 3 Antibody, Carbonyl reductase (NADPH) 3 Antibody, Carbonyl reductase 3 Antibody, HCBR3 Antibody, SDR21C2 Antibody
<b>Host</b>	CBR3 antibody was produced in Mouse
<b>Clonality:</b>	Monoclonal
<b>Isotype:</b>	IgG1
<b>Clone Name:</b>	1G6
<b>Immunogen Species:</b>	CBR3 antibody was raised against Human
<b>Antigen Type:</b>	Recombinant protein
<b>Immunogen:</b>	CBR3 antibody was raised against full length human recombinant protein of human CBR3(NP_001227) produced in HEK293T cell.
<b>Specificity:</b>	Human CBR3
<b>Reactivity:</b>	Human, Monkey, Mouse, Rat, Dog
<b>Purification:</b>	Protein A/G purified
<b>Presentation:</b>	PBS, pH 7.3, 1% BSA, 50% glycerol, 0.02% sodium azide
<b>Recommended Storage:</b>	Store at -20°C. Minimize freezing and thawing.
<b>Uses:</b>	IHC - Paraffin (10 µg/ml), Western blot (1:500 - 1:2000) (Optimal dilution to be determined by the researcher)
<b>Size:</b>	100 µl
<b>Concentration:</b>	0.43 mg/ml

**Immunohistochemistry Image:**



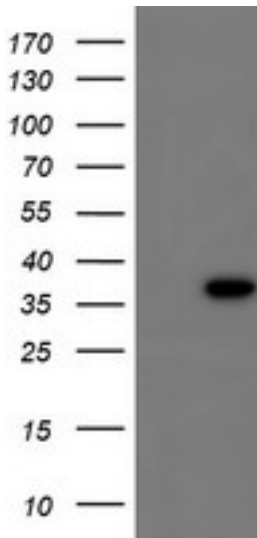
Human Small Intestine: Formalin-Fixed, Paraffin-Embedded (FFPE)

**Western Blot Image:**



Western blot of extracts (35 ug) from 9 different cell lines by using anti-CBR3 monoclonal antibody.

**Western Blot Image:**



HEK293T cells were transfected with the pCMV6-ENTRY control (Left lane) or pCMV6-ENTRY CBR3 (Right lane) cDNA for 48 hrs and lysed. Equivalent amounts of cell lysates (5 ug per lane) were separated by SDS-PAGE and immunoblotted with anti-CBR3.

**Requested From:**

Japan

Laboratory Reagent For In Vitro Research Use Only

Not for resale without prior written consent from LifeSpan BioSciences, Inc.

Created on 9/23/2014

© 2014 LifeSpan BioSciences