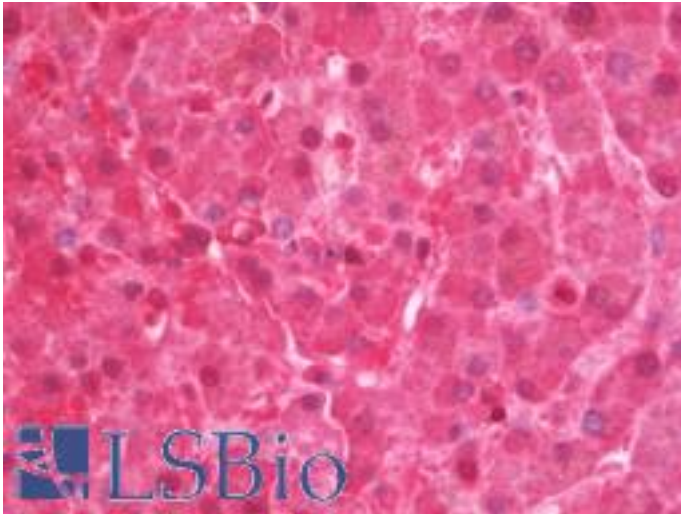


PPP4C Mouse anti-Human Monoclonal Antibody - LS-B10985 - LSBio

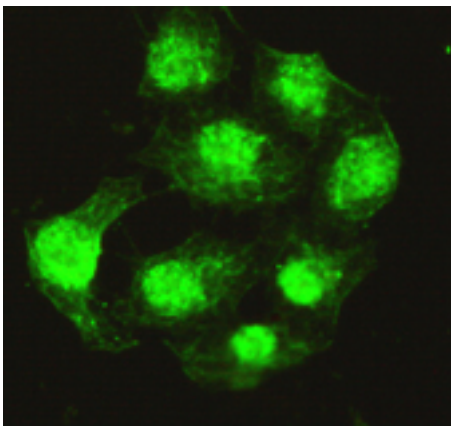
CatalogID:	LS-B10985
Validation:	This antibody replaces catalog number LS-C178313. It has been validated for use in the following assays: IHC-P.
Target:	protein phosphatase 4, catalytic subunit (PPP4C)
Synonyms:	PPP4C Antibody, PP4 Antibody, PPH3 Antibody, Protein phosphatase X Antibody, PP-X Antibody, Protein phosphatase 4 Antibody, PP4C Antibody, PPP4 Antibody, PPX Antibody
Family / Subfamily:	Protein Phosphatase / Protein Phosphatase - Serine/Threonine other
Host	PPP4C antibody was produced in Mouse
Clonality:	Monoclonal
Immunogen Species:	PPP4C antibody was raised against Human
Antigen Type:	Recombinant protein
Immunogen:	PPP4C antibody was raised against recombinant full length human PPP4C.
Reactivity:	Human
Purification:	Immunoaffinity purified
Presentation:	0.1M Tris-Glycine, pH 7.4, 150 mM NaCl, 0.2% sodium azide, 50%,glycerol
Recommended Storage:	Store at 4°C short term. Aliquot and store at -20°C long term. Avoid freeze-thaw cycles.
Uses:	IHC - Paraffin (1:50), ICC (1:50 - 1:200), Immunofluorescence (1:50 - 1:200), Western blot (1:1000) (Optimal dilution to be determined by the researcher)
Size:	100 µl

Immunohistochemistry Image:



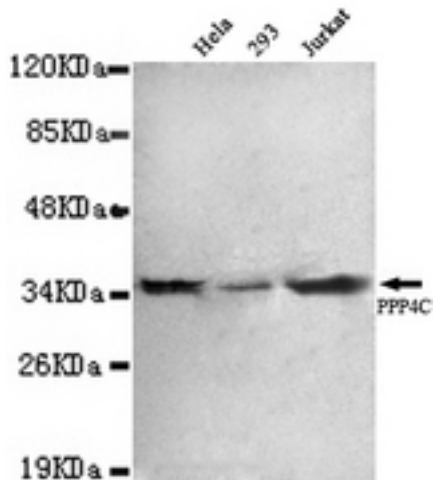
Human Liver: Formalin-Fixed, Paraffin-Embedded (FFPE)

Immunofluorescence Image:



Immunocytochemistry of HeLa cells using anti- Protein Phosphatase 4C antibody diluted 1:200.

Western Blot Image:



PPP4C antibody at 1:1000 dilution Lane1:HeLa whole cell lysate 40 ug/Lane Lane2: 293 whole cell lysate 40 ug/Lane Lane3: Jurkat whole cell lysate 40 ug/Lane.

Requested From:

Japan

Laboratory Reagent For In Vitro Research Use Only

Not for resale without prior written consent from LifeSpan BioSciences, Inc.

Created on 9/23/2014

© 2014 LifeSpan BioSciences