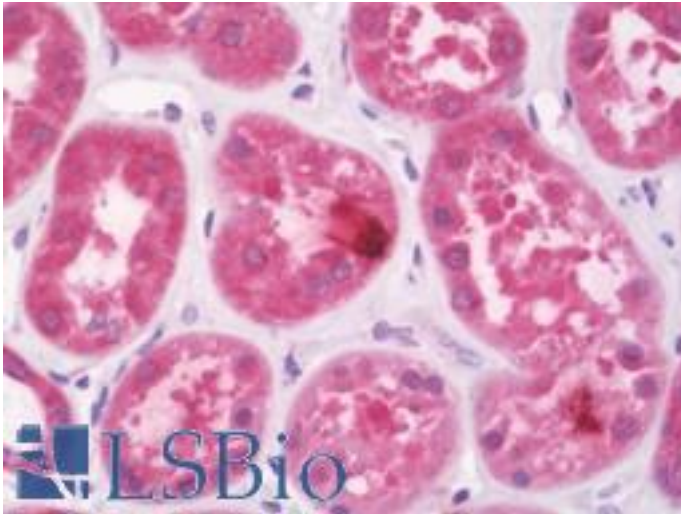


KDEL2 Rabbit anti-Human Polyclonal (aa100-150) Antibody - LS-B10979 - LSBio

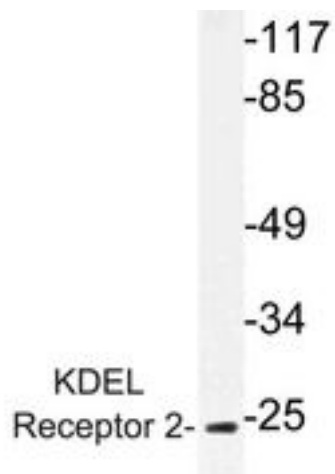
CatalogID:	LS-B10979
Validation:	This antibody replaces catalog number LS-C177372. It has been validated for use in the following assays: IHC-P.
Target:	KDEL (Lys-Asp-Glu-Leu) endoplasmic reticulum protein retention receptor 2 (KDEL2)
Synonyms:	KDEL2 Antibody, ERD2-like protein 1 Antibody, ERD2.2 Antibody, ERD-2-like protein Antibody, KDEL receptor 2 Antibody, ELP-1 Antibody
Host	KDEL2 antibody was produced in Rabbit
Clonality:	Polyclonal
Immunogen Species:	KDEL2 antibody was raised against Human
Antigen Type:	Synthetic peptide
Immunogen:	KDEL2 antibody was raised against synthetic peptide around Leu119 of human KDEL2
Specificity:	Human KDEL2
Epitope:	aa100-150
Reactivity:	Human, Mouse, Rat
Purification:	Immunoaffinity purified
Presentation:	PBS, pH 7.2, 0.05% sodium azide
Recommended Storage:	Store at 4°C short term. Aliquot and store at -20°C long term. Avoid freeze-thaw cycles.
Uses:	IHC - Paraffin (5 µg/ml), Immunofluorescence (1:50 - 1:200), Western blot (1:500 - 1:1000) (Optimal dilution to be determined by the researcher)
Size:	50 µl
Concentration:	1 mg/ml

Immunohistochemistry Image:



Human Kidney: Formalin-Fixed, Paraffin-Embedded (FFPE)

Western Blot Image:



Western blot of KDEL Receptor 2 (L119) pAb in extracts from HUVEC cells.

Requested From:

Japan

Laboratory Reagent For In Vitro Research Use Only

Not for resale without prior written consent from LifeSpan BioSciences, Inc.

Created on 9/23/2014

© 2014 LifeSpan BioSciences