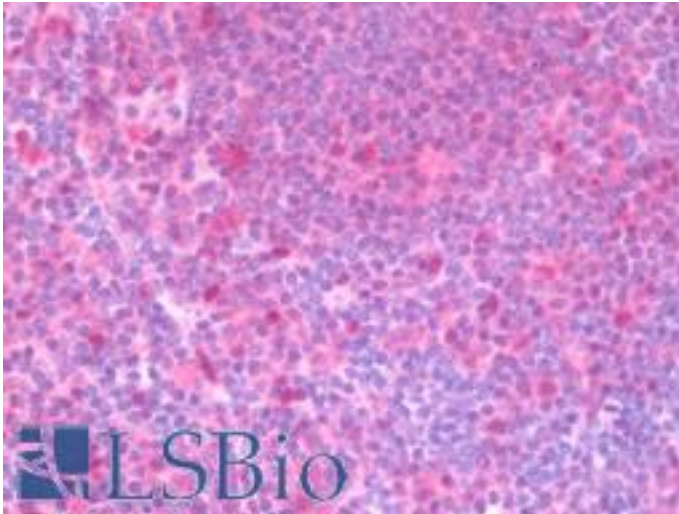


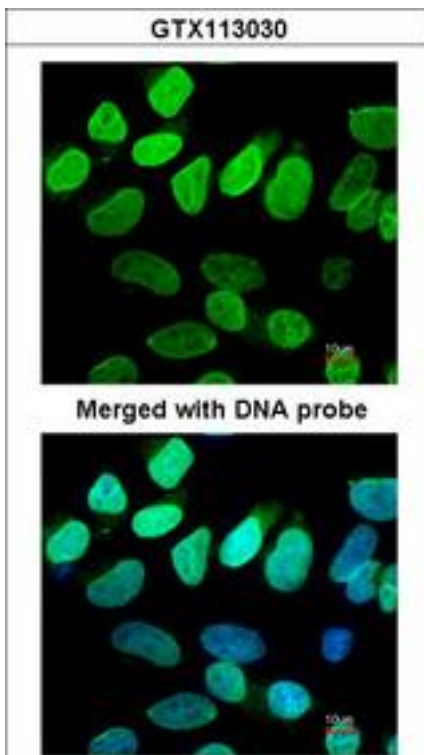
VCP Rabbit anti-Human Polyclonal (aa1-206) Antibody - LS-B10973 - LSBio	
CatalogID:	LS-B10973
Validation:	This antibody replaces catalog number LS-C186288. It has been validated for use in the following assays: IHC-P.
Target:	valosin containing protein (VCP)
Synonyms:	VCP Antibody, 15S Mg(2+)-ATPase p97 subunit Antibody, ALS14 Antibody, TER ATPase Antibody, TERA Antibody, Valosin containing protein Antibody, Yeast Cdc48p homolog Antibody, Valosin-containing protein Antibody, IBMPFD Antibody, p97 Antibody
Host	VCP antibody was produced in Rabbit
Clonality:	Polyclonal
Isotype:	IgG
Immunogen Species:	VCP antibody was raised against Human
Antigen Type:	Recombinant protein
Immunogen:	VCP antibody was raised against recombinant fragment corresponding to a region within amino acids 1 and 206 of VCP (SwissProt P55072). Percent identity by BLAST analysis: Human, Rat (100%); Chicken, Pig, Bovine (99%); Xenopus (98%); Zebrafish (97%).
Specificity:	Human VCP
Epitope:	aa1-206
Reactivity:	Human, Mouse, Rat
Purification:	Immunoaffinity purified
Presentation:	0.1 M Tris-glycine, pH 7.0, 10% glycerol, 0.01% Thimerosal
Recommended Storage:	Keep as concentrated solution. Aliquot and store at -20°C or below. Avoid multiple freeze-thaw cycles.
Usage Summary:	IHC-paraffin: Suggested antigen retrieval using heat mediated 10 mM Citrate buffer (pH 6.0) or Tris-EDTA buffer (pH 8.0).
Uses:	IHC - Paraffin (5 µg/ml), ICC (1:100 - 1:1000), Western blot (1:1000 - 1:10000) (Optimal dilution to be determined by the researcher)
Size:	50 µl
Concentration:	1 mg/ml

Immunohistochemistry Image:



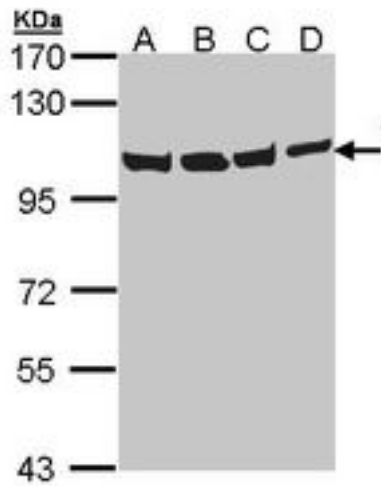
Human Tonsil: Formalin-Fixed, Paraffin-Embedded (FFPE)

Immunocytochemistry Image:



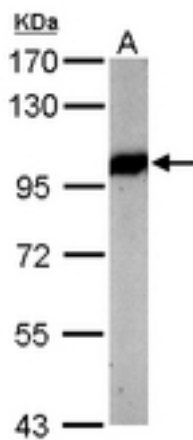
Immunofluorescence of paraformaldehyde-fixed HeLa using VCP (p97) antibody at 1:200 dilution.

Western Blot Image:



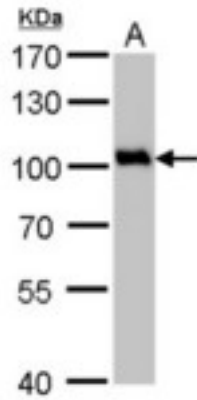
Sample (30 ug of whole cell lysate). A: HeLa, B: Hep G2 , C: Molt-4 , D: Raji. 7.5% SDS PAGE. VCP antibody diluted at 1:1000.

Western Blot Image:



Sample (50 ug of whole cell lysate). A: mouse brain. 7.5% SDS PAGE. VCP antibody diluted at 1:5000.

Western Blot Image:



Sample (50 ug of whole cell lysate). A: rat brain. 7.5% SDS PAGE. VCP antibody diluted at 1:1000.

Requested From:

Japan

Laboratory Reagent For In Vitro Research Use Only

Not for resale without prior written consent from LifeSpan BioSciences, Inc.

Created on 9/23/2014

© 2014 LifeSpan BioSciences