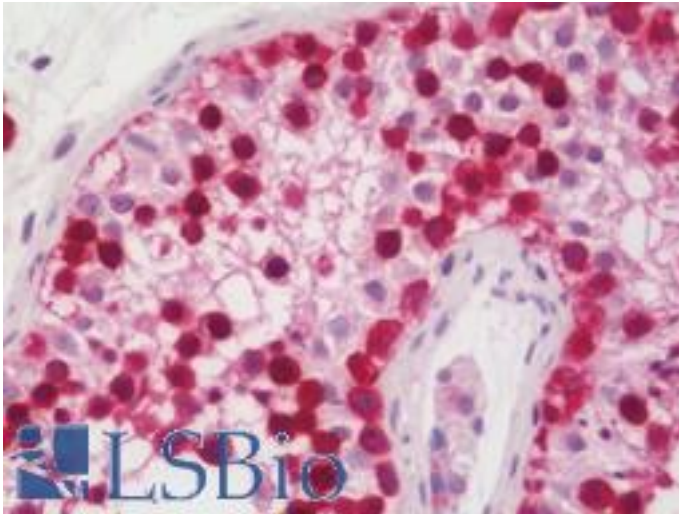


**GAGE7 Rabbit anti-Human Polyclonal (aa87-116) Antibody - LS-B10971 - LSBio**

<b>CatalogID:</b>	LS-B10971
<b>Validation:</b>	This antibody replaces catalog number LS-C166340. It has been validated for use in the following assays: IHC-P.
<b>Target:</b>	G antigen 7 (GAGE7)
<b>Synonyms:</b>	GAGE7 Antibody, Cancer/testis antigen 4.7 Antibody, CT4.7 Antibody, AL4 Antibody, G antigen 7 Antibody, Gage-8 Antibody, GAGE-12I Antibody, GAGE7B Antibody, G antigen 12G Antibody, Gage-7 Antibody, GAGE-7B Antibody
<b>Host</b>	GAGE7 antibody was produced in Rabbit
<b>Clonality:</b>	Polyclonal
<b>Immunogen Species:</b>	GAGE7 antibody was raised against Human
<b>Antigen Type:</b>	Synthetic peptide
<b>Immunogen:</b>	GAGE7 antibody was raised against kLH-conjugated synthetic peptide from C-terminal region of human GAGE7.
<b>Specificity:</b>	Human GAGE7
<b>Epitope:</b>	aa87-116
<b>Reactivity:</b>	Human
<b>Purification:</b>	Immunoaffinity purified
<b>Presentation:</b>	PBS, 0.09% sodium azide
<b>Recommended Storage:</b>	Maintain refrigerated at 2-8°C for up to 6 months. For long term storage store at -20°C.
<b>Uses:</b>	IHC - Paraffin (1:100), Western blot (1:1000), Flow Cytometry (1:10 - 1:50) (Optimal dilution to be determined by the researcher)
<b>Size:</b>	200 µl

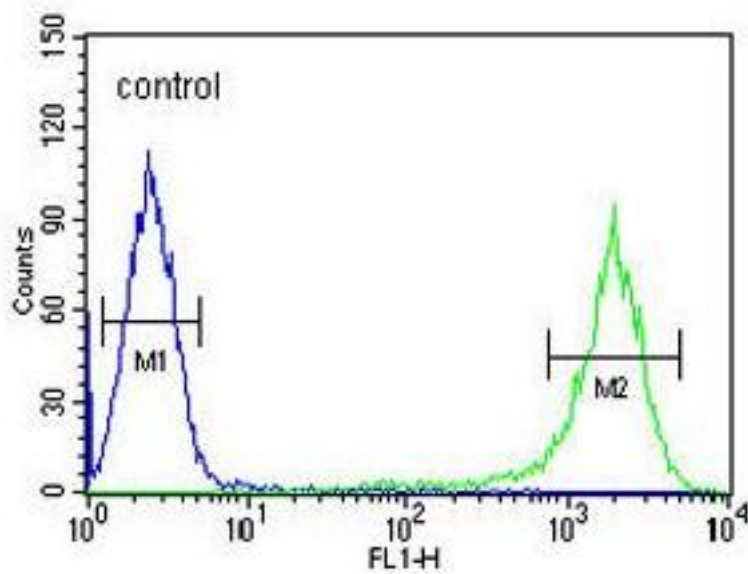
**Immunohistochemistry Image:**



Human Testis: Formalin-Fixed, Paraffin-Embedded (FFPE)

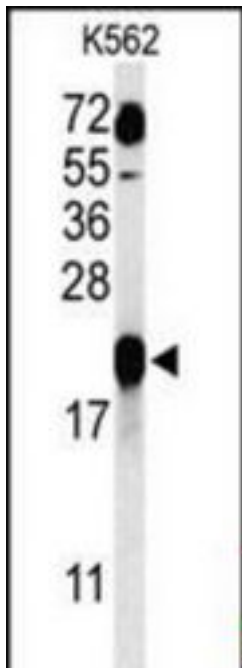
**Flow Cytometry Image:**

**K562**



GAGE7 Antibody (C-term) flow cytometry of K562 cells (right histogram) compared to a negative control cell (left histogram). FITC-conjugated goat-anti-rabbit secondary antibodies were used for the analysis.

**Western Blot Image:**



Western blot of GAGE7 Antibody (C-term) in K562 cell line lysates (35 ug/lane). GAGE7 (arrow) was detected using the purified Pab.

**Requested From:**

Japan

Laboratory Reagent For In Vitro Research Use Only

Not for resale without prior written consent from LifeSpan BioSciences, Inc.

Created on 9/23/2014

© 2014 LifeSpan BioSciences