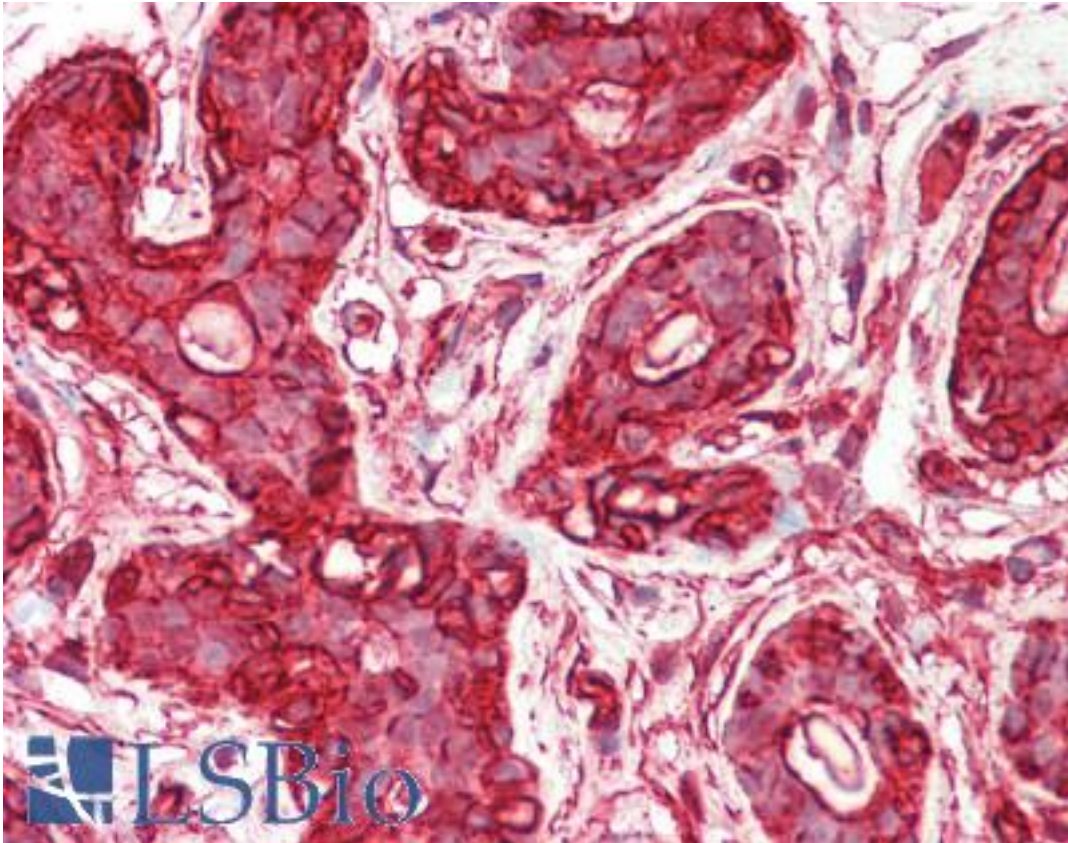


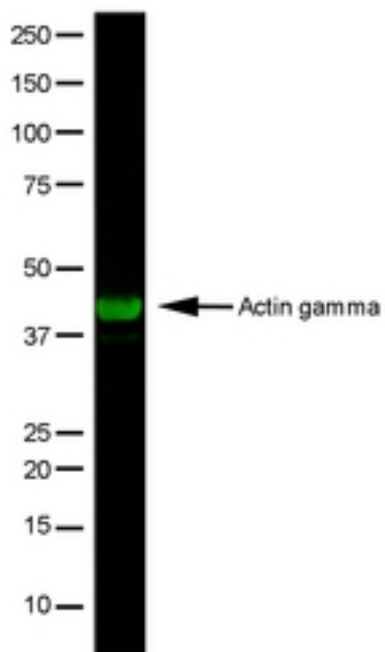
ACTG1 / Gamma Actin Mouse anti-Human Monoclonal (N-Terminus) (2A3) Antibody - LS-B10963 - LSBio	
<b>CatalogID:</b>	LS-B10963
<b>Validation:</b>	This antibody replaces catalog number LS-C187553. It has been validated for use in the following assays: IHC-P.
<b>Target:</b>	actin, gamma 1 (ACTG1)
<b>Synonyms:</b>	ACTG1 Antibody, ACTG Antibody, Actin, gamma 1 Antibody, BRWS2 Antibody, Cytoskeletal gamma-actin Antibody, DFNA20 Antibody, Actin, cytoplasmic 2 Antibody, Gamma-actin Antibody, DFNA26 Antibody
<b>Host</b>	ACTG1 antibody was produced in Mouse
<b>Clonality:</b>	Monoclonal
<b>Isotype:</b>	IgG2b
<b>Clone Name:</b>	2A3
<b>Immunogen Species:</b>	ACTG1 / Gamma Actin antibody was raised against Human
<b>Antigen Type:</b>	Synthetic peptide
<b>Immunogen:</b>	ACTG1 / Gamma Actin antibody was raised against synthetic peptide corresponding to the N-terminal nonapeptide of gamma-cytoplasmic actin, coupled to KLH.
<b>Specificity:</b>	Clone 2A3 recognizes cytoplasmic actin gamma (known also as ACTG and Gamma Actin), a 41.8 kD cytoskeletal protein. Actins are highly conserved proteins that are involved in cell motility, structure and integrity and are ubiquitously expressed in all eukaryotic cells. Six different isoforms of actin have been identified. Clone 2A3 is highly specific for actin gamma and does not react with other actin isoforms.
<b>Epitope:</b>	N-Terminus
<b>Reactivity:</b>	Human, Mouse
<b>Purification:</b>	Purified
<b>Presentation:</b>	PBS, 0.09% sodium azide
<b>Recommended Storage:</b>	+4°C or -20°C, Avoid repeated freezing and thawing.
<b>Uses:</b>	IHC - Paraffin (10 µg/ml), Immunofluorescence, Western blot (1:100 - 1:1000) (Optimal dilution to be determined by the researcher)
<b>Size:</b>	50 µg
<b>Concentration:</b>	1 mg/ml

**Immunohistochemistry Image:**



Human Breast: Formalin-Fixed, Paraffin-Embedded (FFPE)

**Western Blot Image:**



HeLa whole cell lysate stained with Mouse anti-Human Actin Gamma followed by Rabbit F(ab')<sub>2</sub> anti-Mouse IgG:DyLight800 . Visualized using the LiCOR Odyssey imager

<b>Requested From:</b>	Japan
Laboratory Reagent For In Vitro Research Use Only	
Not for resale without prior written consent from LifeSpan BioSciences, Inc.	
Created on 9/23/2014	
© 2014 LifeSpan BioSciences	