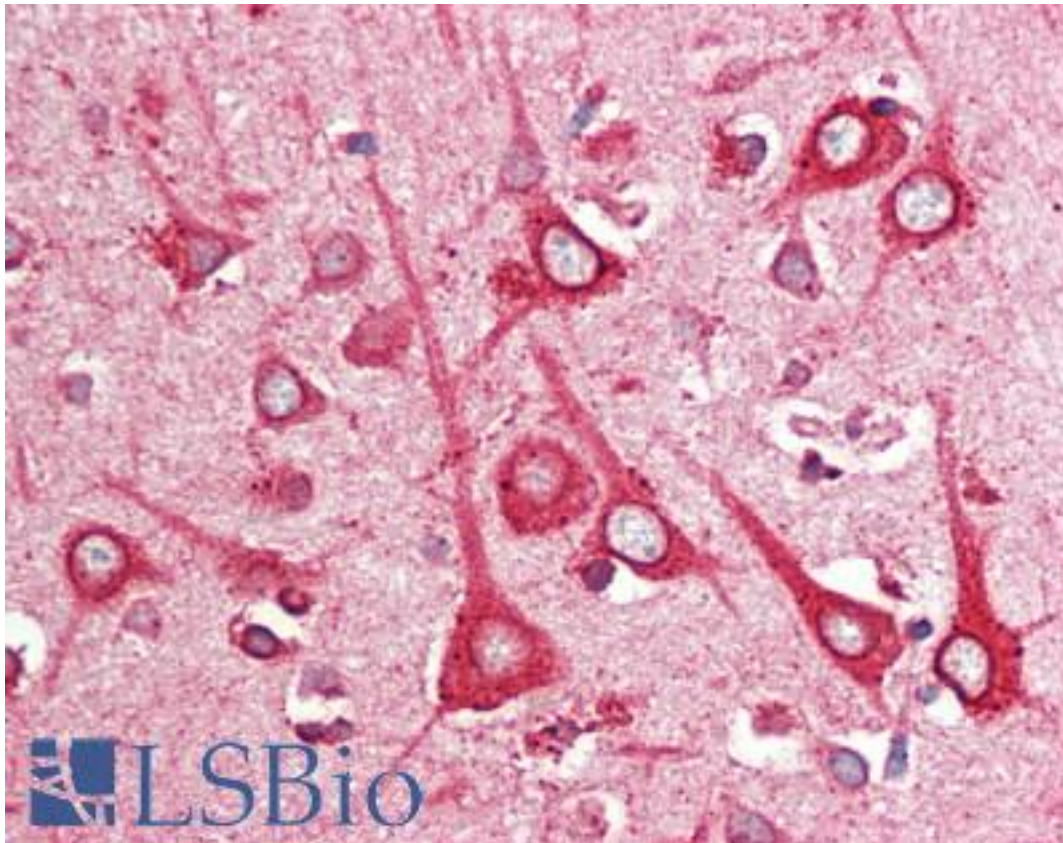


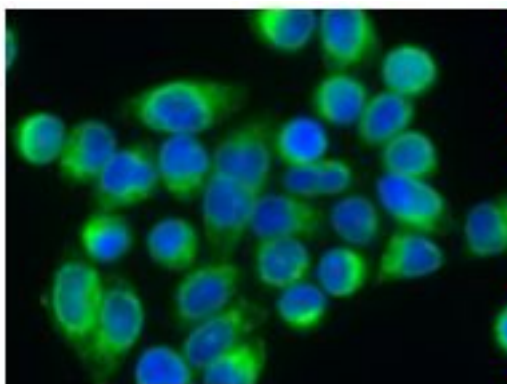
KDEL Tetrapeptide Mouse anti-Mouse Monoclonal (1D5) Antibody - LS-B10962 - LSBio	
CatalogID:	LS-B10962
Validation:	This antibody replaces catalog number LS-C179862. It has been validated for use in the following assays: IHC-P.
Target:	KDEL Tetrapeptide
Host	Mouse
Clonality:	Monoclonal
Isotype:	IgG2a,k
Clone Name:	1D5
Immunogen Species:	Mouse
Antigen Type:	Synthetic peptide
Immunogen:	Mouse GRP78 C-terminal 644-655 aa.
Specificity:	KDEL Tetrapeptide
Reactivity:	Mouse, Human, Rat, Hamster
Purification:	Protein A purified
Presentation:	PBS, pH 7.2, 50% glycerol
Recommended Storage:	Store at -20°C.
Uses:	IHC - Paraffin (10 µg/ml), ICC (0.5 µg/ml), Western blot (0.1 µg/ml) (Optimal dilution to be determined by the researcher)
Size:	50 µg
Concentration:	1 mg/ml

Immunohistochemistry Image:



Human Brain, Cortex: Formalin-Fixed, Paraffin-Embedded (FFPE)

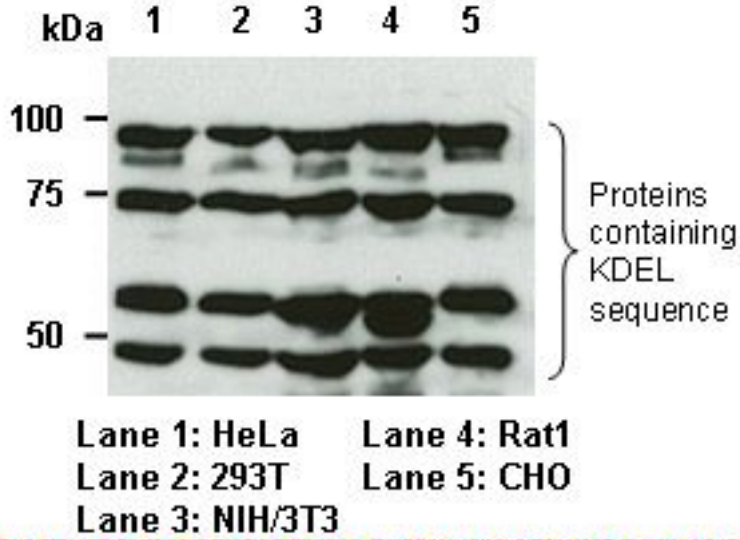
Immunocytochemistry Image:



Green: anti-KDEL
Blue: DAPI counter stain

Western Blot Image:

■ **Western blotting**



Requested From:

Japan

Laboratory Reagent For In Vitro Research Use Only

Not for resale without prior written consent from LifeSpan BioSciences, Inc.

Created on 9/23/2014

© 2014 LifeSpan BioSciences