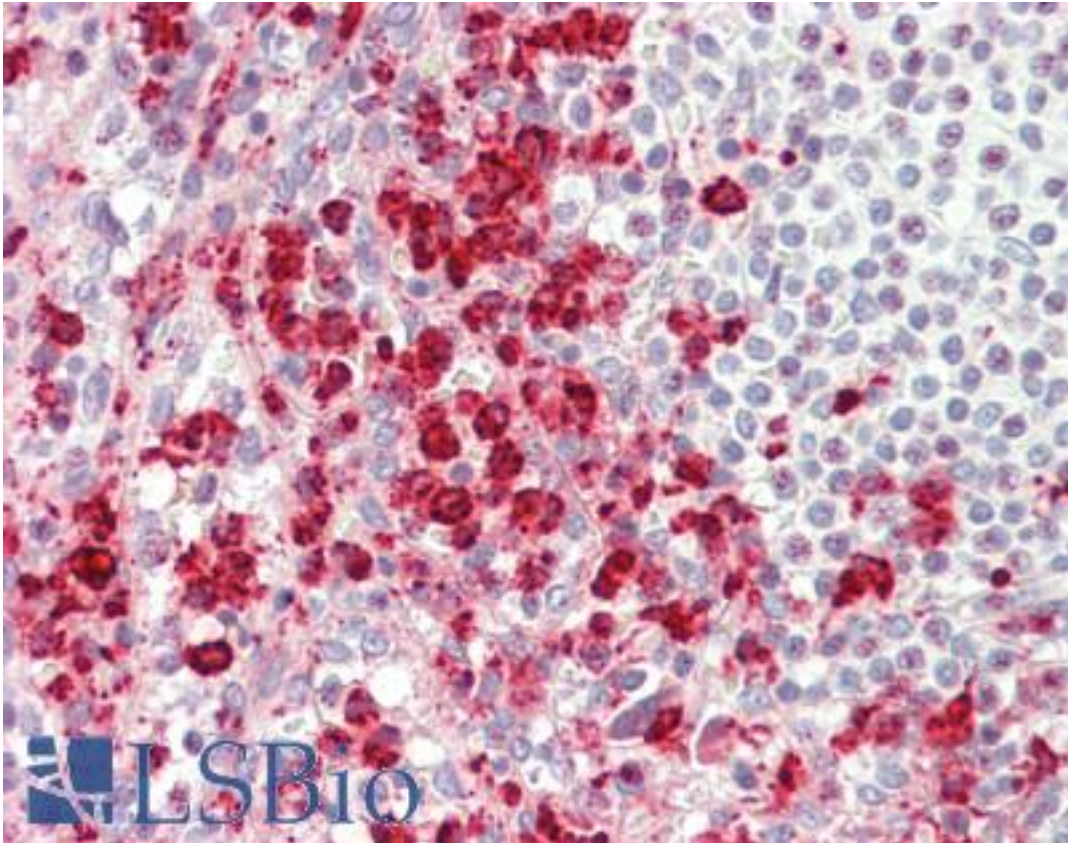


TRAM1 Rabbit anti-Human Polyclonal (aa310-374) Antibody - LS-B10961 - LSBio

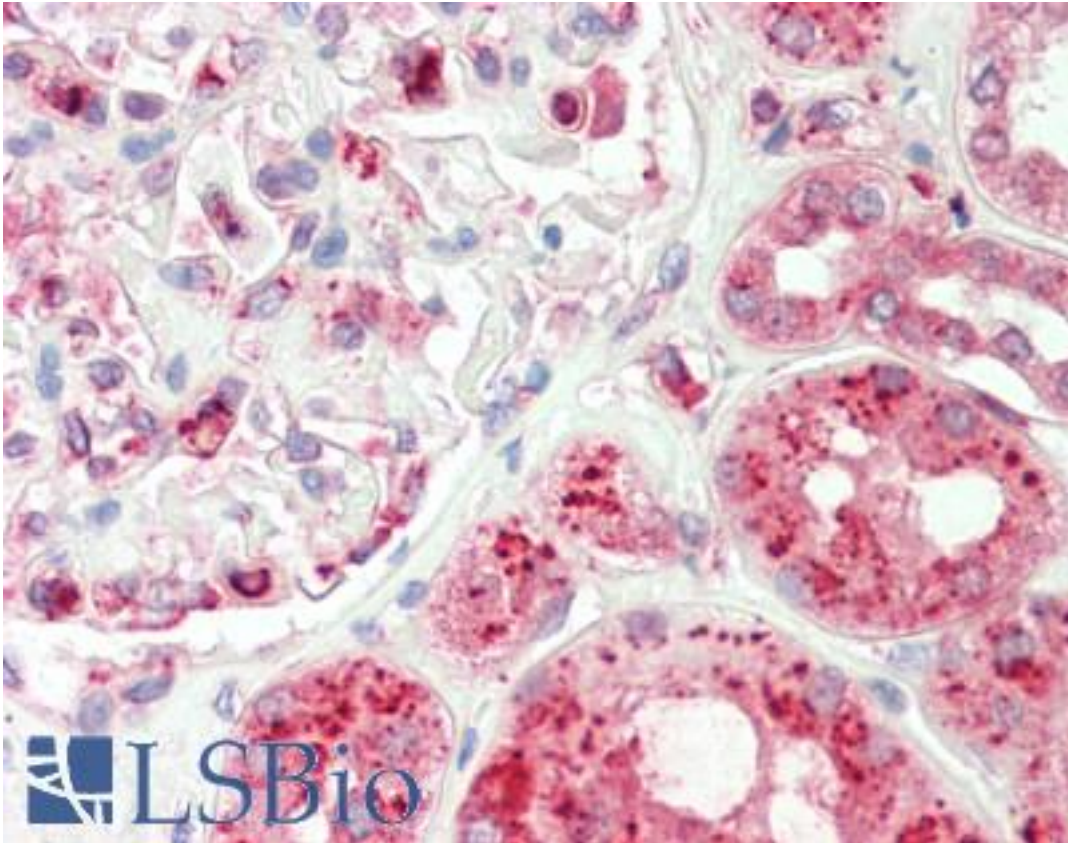
|                             |   |
|-----------------------------|---|
| <b>CatalogID:</b>           | LS-B10961   |
| <b>Validation:</b>          | This antibody replaces catalog number LS-C186000. It has been validated for use in the following assays: IHC-P.                           |
| <b>Target:</b>              | translocation associated membrane protein 1 (TRAM1)   |
| <b>Synonyms:</b>            | TRAM1 Antibody, PNAS8 Antibody, TRAM Antibody, TRAMP Antibody   |
| <b>Host</b>                 | TRAM1 antibody was produced in Rabbit   |
| <b>Clonality:</b>           | Polyclonal  |
| <b>Immunogen Species:</b>   | TRAM1 antibody was raised against Human   |
| <b>Antigen Type:</b>        | Synthetic peptide   |
| <b>Immunogen:</b>           | TRAM1 antibody was raised against synthetic peptide corresponding to a region within amino acids 310 and 374 of TRAM1 (SwissProt Q15629). |
| <b>Specificity:</b>         | Human TRAM1   |
| <b>Epitope:</b>             | aa310-374   |
| <b>Reactivity:</b>          | Human   |
| <b>Purification:</b>        | Immunoaffinity purified   |
| <b>Presentation:</b>        | 0.1 M Tris-glycine, pH 7.0, 10% glycerol, 0.01% Thimerosal  |
| <b>Recommended Storage:</b> | Keep as concentrated solution. Aliquot and store at -20°C or below. Avoid multiple freeze-thaw cycles.                                    |
| <b>Usage Summary:</b>       | IHC-paraffin: Suggested antigen retrieval using heat mediated 10 mM Citrate buffer (pH 6.0) or Tris-EDTA buffer (pH 8.0).                 |
| <b>Uses:</b>                | IHC - Paraffin (1:100), ICC (1:100 - 1:1000), Western blot (1:500 - 1:3000) (Optimal dilution to be determined by the researcher)         |
| <b>Size:</b>                | 50 µl   |
| <b>Concentration:</b>       | 1 mg/ml   |

**Immunohistochemistry Image:**



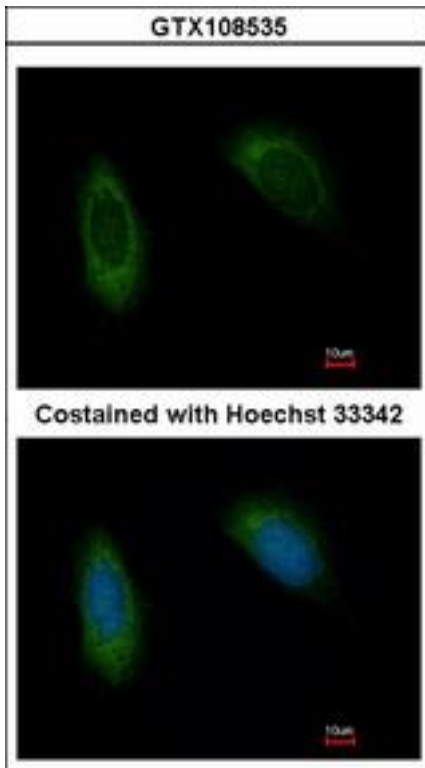
Human Spleen: Formalin-Fixed, Paraffin-Embedded (FFPE)

**Immunohistochemistry Image:**



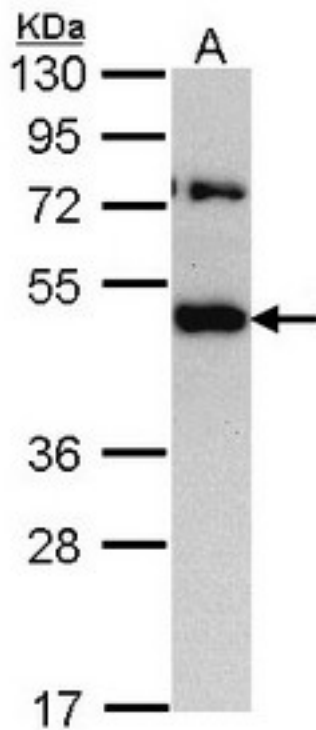
Human Kidney: Formalin-Fixed, Paraffin-Embedded (FFPE)

**Immunocytochemistry Image:**



Immunofluorescence of methanol-fixed HeLa using TRAM1 antibody at 1:500 dilution.

**Western Blot Image:**



Sample (30 ug of whole cell lysate). A: H1299. 10% SDS PAGE. TRAM1 antibody diluted at 1:1000.

|  |       |
|--|-------|
| <b>Requested From:</b>   | Japan |
| Laboratory Reagent For In Vitro Research Use Only                            |       |
| Not for resale without prior written consent from LifeSpan BioSciences, Inc. |       |
| Created on 9/23/2014   |       |
| © 2014 LifeSpan BioSciences  |       |