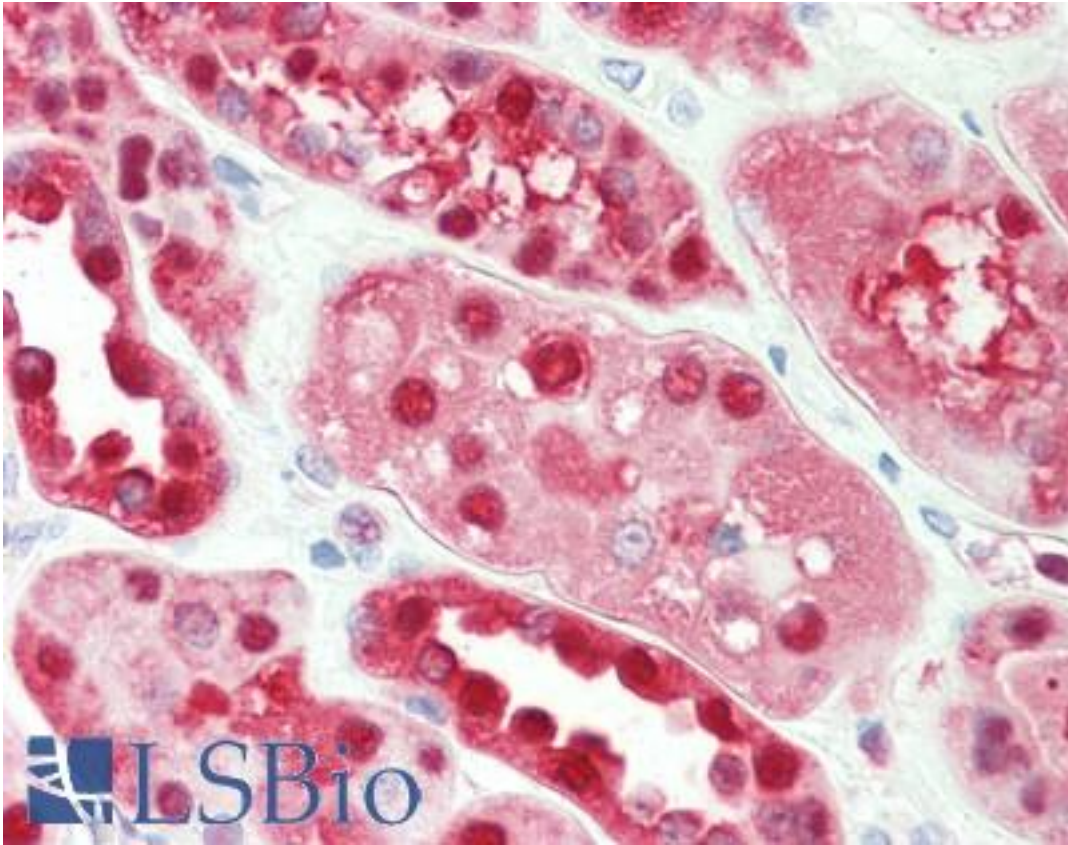


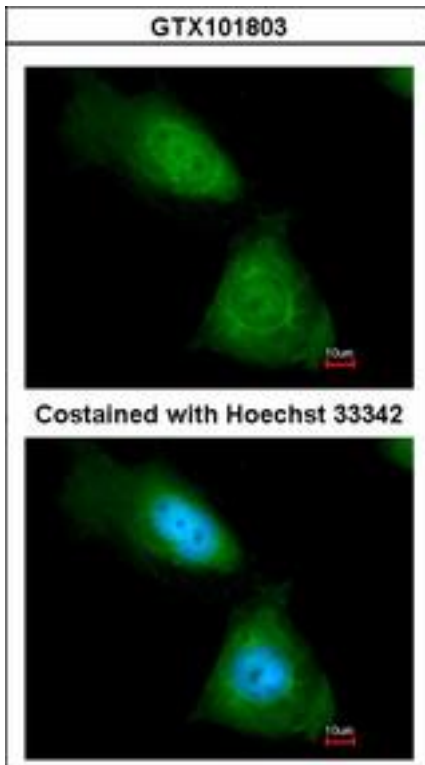
ENO1 / Alpha Enolase Rabbit anti-Human Polyclonal (aa199-434) Antibody - LS-B10960 - LSBio	
CatalogID:	LS-B10960
Validation:	This antibody replaces catalog number LS-C185434. It has been validated for use in the following assays: IHC-P.
Target:	enolase 1, (alpha) (ENO1)
Synonyms:	ENO1 Antibody, Alpha Enolase Antibody, Alpha enolase like 1 Antibody, ENO1L1 Antibody, Enolase 1 Antibody, MBP-1 Antibody, MBPB1 Antibody, MPB1 Antibody, MYC promoter-binding protein 1 Antibody, NNE Antibody, Phosphopyruvate hydratase Antibody, Alpha-enolase Antibody, Tau-crystallin Antibody, MBP1 Antibody, MPB-1 Antibody, C-myc promoter-binding protein Antibody, Enolase 1, (alpha) Antibody, Enolase-alpha Antibody, Non-neural enolase Antibody, Plasminogen-binding protein Antibody, PPH Antibody
Host	ENO1 antibody was produced in Rabbit
Clonality:	Polyclonal
Immunogen Species:	ENO1 / Alpha Enolase antibody was raised against Human
Antigen Type:	Recombinant protein
Immunogen:	ENO1 / Alpha Enolase antibody was raised against recombinant fragment corresponding to a region within amino acids 199 and 434 of ENO1 (SwissProt P06733).
Specificity:	Human ENO1 / Alpha Enolase
Epitope:	aa199-434
Reactivity:	Human, Mouse
Purification:	Immunoaffinity purified
Presentation:	0.1 M Tris-glycine, pH 7.0, 10% glycerol, 0.01% Thimerosal
Recommended Storage:	Keep as concentrated solution. Aliquot and store at -20°C or below. Avoid multiple freeze-thaw cycles.
Usage Summary:	IHC-paraffin: Suggested antigen retrieval using heat mediated 10 mM Citrate buffer (pH 6.0) or Tris-EDTA buffer (pH 8.0).
Uses:	IHC - Paraffin (1:100), ICC (1:100 - 1:1000), Western blot (1:500 - 1:3000) (Optimal dilution to be determined by the researcher)
Size:	50 µl
Concentration:	1 mg/ml

Immunohistochemistry Image:



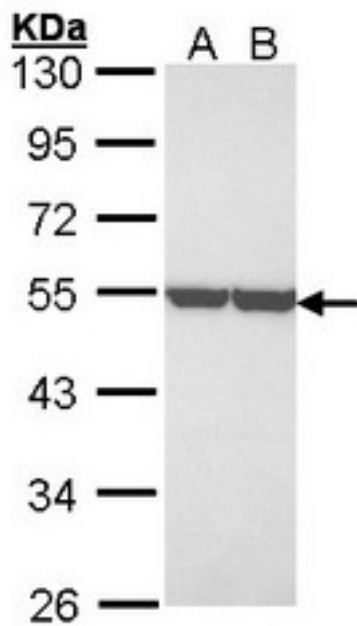
Human Kidney: Formalin-Fixed, Paraffin-Embedded (FFPE)

Immunocytochemistry Image:



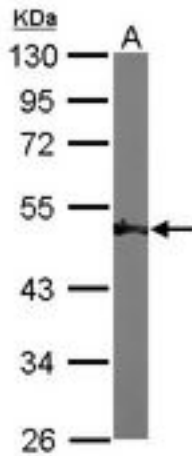
Immunofluorescence of paraformaldehyde-fixed HeLa using enolase 1 antibody at 1:200 dilution.

Western Blot Image:



Sample (30 ug of whole cell lysate). A: A431 , B: H1299. 10% SDS PAGE. ENO1 / Alpha Enolase antibody diluted at 1:3000

Western Blot Image:



Sample (50 ug of whole cell lysate). A: Mouse brain. 10% SDS PAGE. ENO1 / Alpha Enolase antibody diluted at 1:1000.

Requested From:

Japan

Laboratory Reagent For In Vitro Research Use Only

Not for resale without prior written consent from LifeSpan BioSciences, Inc.

Created on 9/23/2014

© 2014 LifeSpan BioSciences