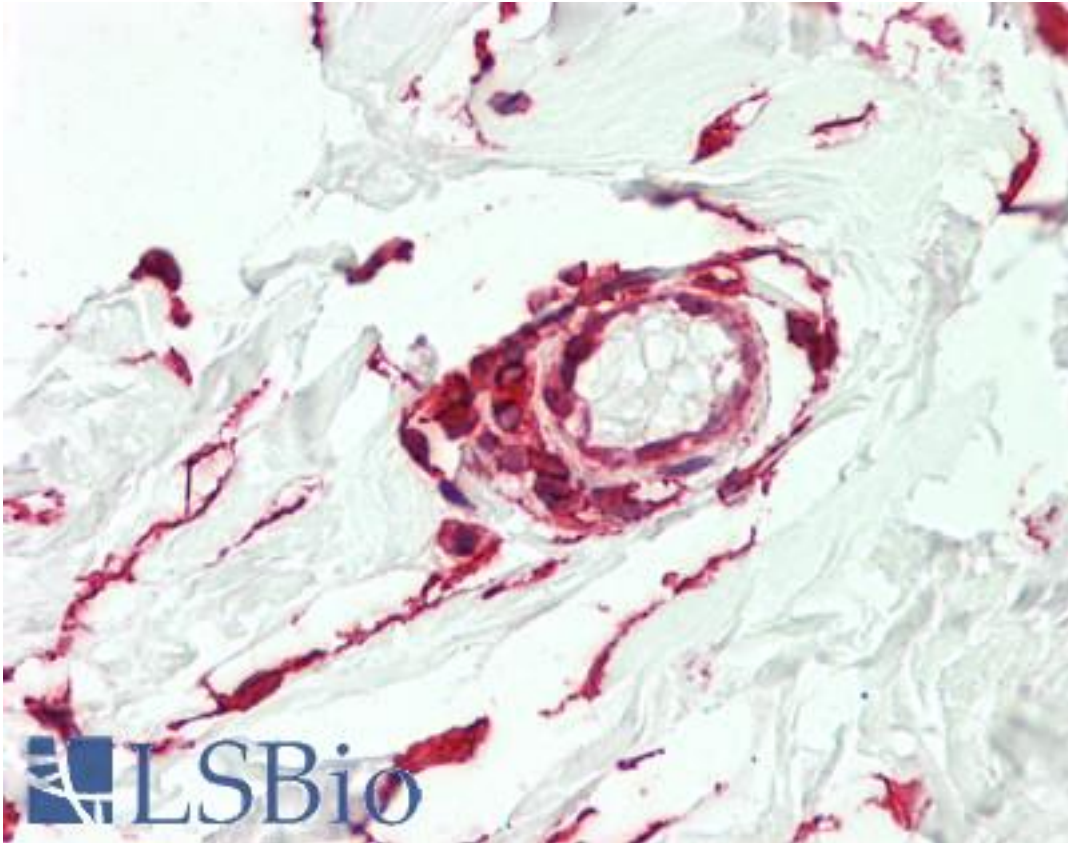


CTHRC1 Mouse anti-Human Monoclonal (1G12) Antibody - LS-B10953 - LSBio

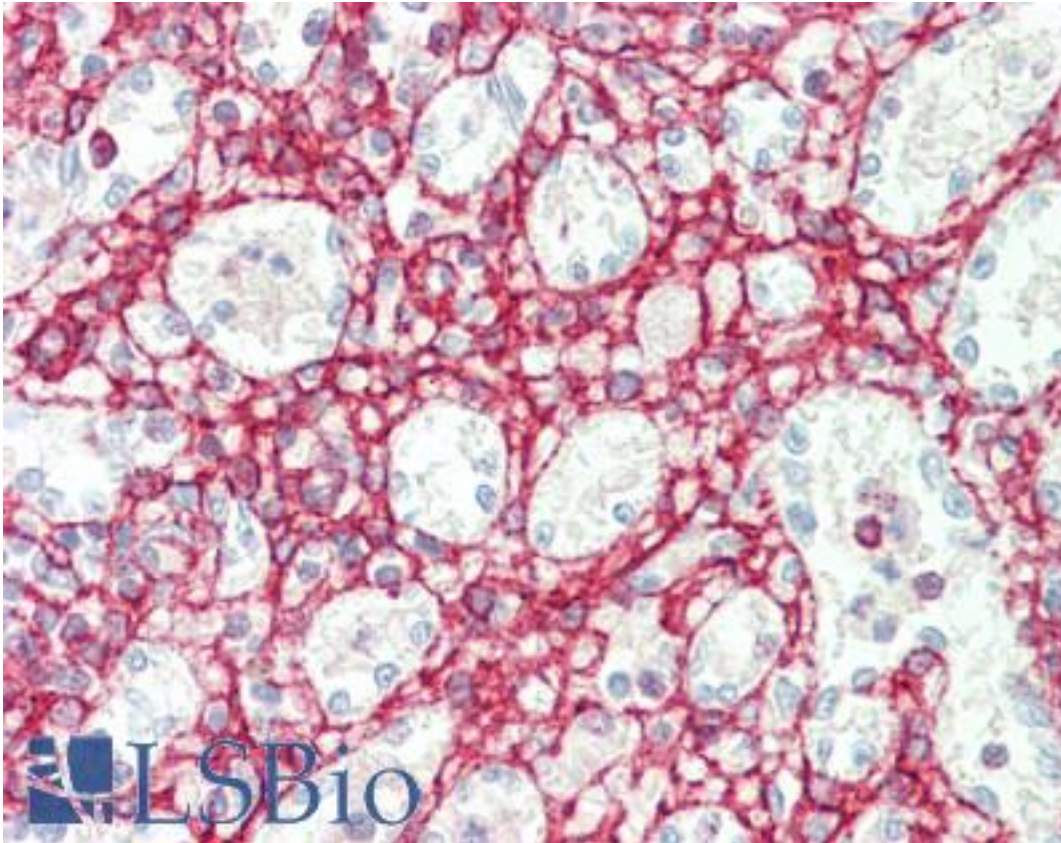
| | |
|-----------------------------|--|
| CatalogID: | LS-B10953 |
| Validation: | This antibody replaces catalog number LS-C134119. It has been validated for use in the following assays: IHC-P. |
| Target: | collagen triple helix repeat containing 1 (CTHRC1) |
| Synonyms: | CTHRC1 Antibody, Protein NMTC1 Antibody |
| Host | CTHRC1 antibody was produced in Mouse |
| Clonality: | Monoclonal |
| Isotype: | IgG2a,k |
| Clone Name: | 1G12 |
| Immunogen Species: | CTHRC1 antibody was raised against Human |
| Immunogen: | CTHRC1 antibody was raised against cTHRC1 (NP_612464, 32 a.a. ~ 142 a.a) partial recombinant protein with GST tag. MW of the GST tag alone is 26 KDa. |
| Specificity: | Human CTHRC1 |
| Reactivity: | Human |
| Purification: | Protein A purified |
| Presentation: | PBS, pH 7.4. |
| Recommended Storage: | Store at -20°C or lower. Aliquot to avoid repeated freezing and thawing. |
| Usage Summary: | Immunohistochemistry: Formalin-fixed paraffin-embedded sections. Sandwich ELISA: Recombinant protein. Western Blot: Transfected lysate, Recombinant protein. |
| Uses: | IHC - Paraffin (3 - 10 µg/ml), Western blot, ELISA (Optimal dilution to be determined by the researcher) |
| Size: | 50 µg |
| Concentration: | 0.42 mg/ml |

Immunohistochemistry Image:



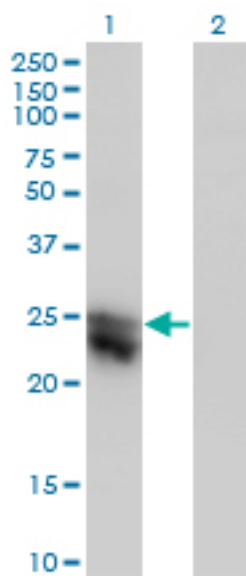
Human Vessel: Formalin-Fixed, Paraffin-Embedded (FFPE)

Immunohistochemistry Image:



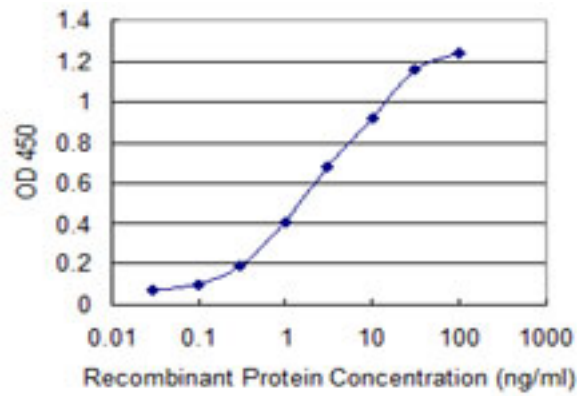
Human Spleen: Formalin-Fixed, Paraffin-Embedded (FFPE)

Western Blot Image:



Western blot of CTHRC1 expression in transfected 293T cell line by CTHRC1 monoclonal antibody (M05), clone 1G12.

ELISA Image:



Detection limit for recombinant GST tagged CTHRC1 is 0.03 ng/ml as a capture antibody.

Requested From:

Japan

Laboratory Reagent For In Vitro Research Use Only

Not for resale without prior written consent from LifeSpan BioSciences, Inc.

Created on 9/23/2014

© 2014 LifeSpan BioSciences