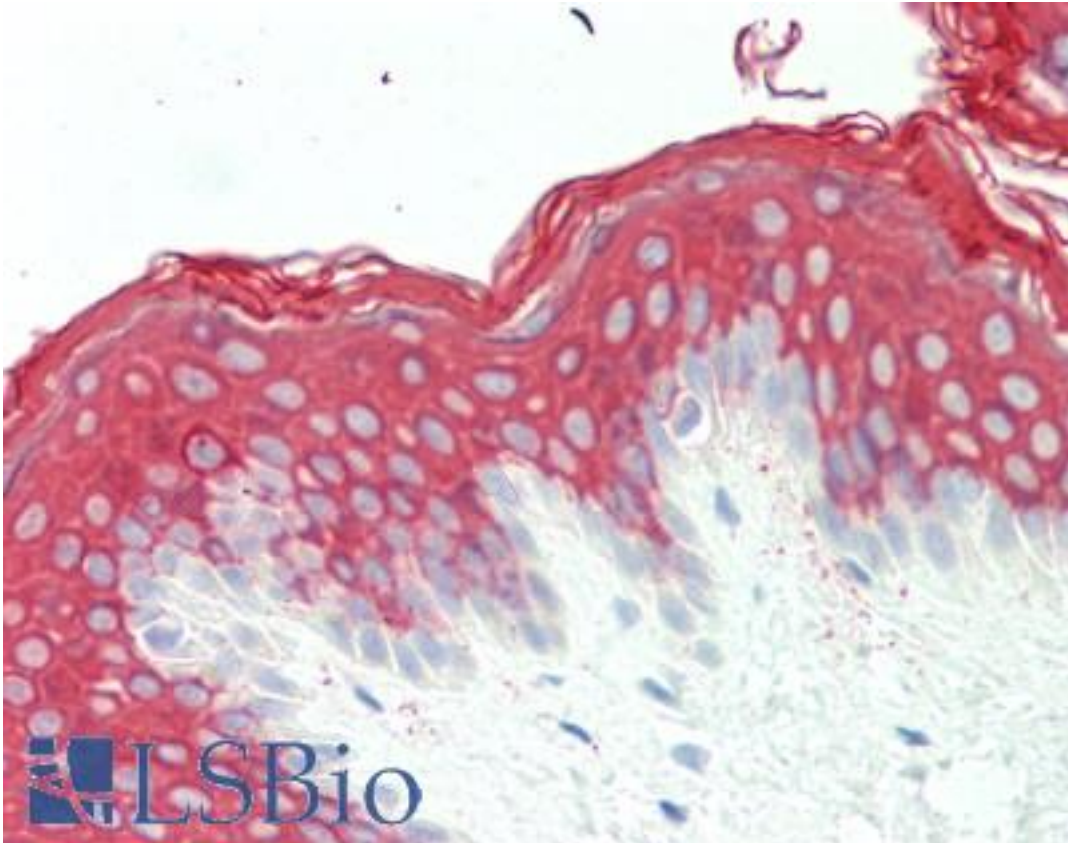


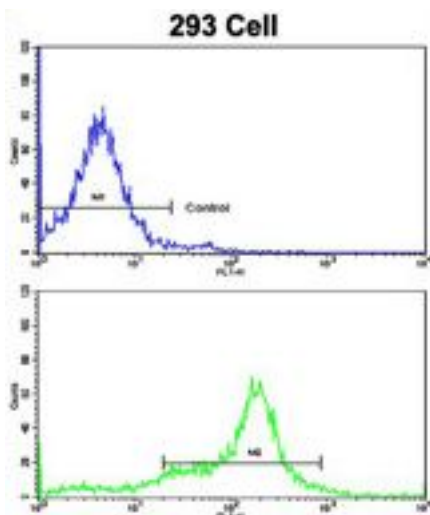
KRT10 / CK10 / Cytokeratin 10 Rabbit anti-Human Polyclonal (aa157-187) Antibody - LS-B10950 - LSBio	
CatalogID:	LS-B10950
Validation:	This antibody replaces catalog number LS-C165614. It has been validated for use in the following assays: IHC-P.
Target:	keratin 10 (KRT10)
Synonyms:	KRT10 Antibody, BIE Antibody, BCIE Antibody, CK10 Antibody, Cytokeratin 10 Antibody, Cytokeratin-10 Antibody, EHK Antibody, Keratin-10 Antibody, KPP Antibody, Keratin 10 Antibody, CK-10 Antibody, K10 Antibody
Host	KRT10 antibody was produced in Rabbit
Clonality:	Polyclonal
Immunogen Species:	KRT10 / CK10 / Cytokeratin 10 antibody was raised against Human
Antigen Type:	Synthetic peptide
Immunogen:	KRT10 / CK10 / Cytokeratin 10 antibody was raised against kLH-conjugated synthetic peptide from N-terminal region of human KRT10.
Specificity:	Human Keratin 10 / Cytokeratin 10
Epitope:	aa157-187
Reactivity:	Human
Purification:	Immunoaffinity purified
Presentation:	PBS, 0.09% sodium azide
Recommended Storage:	Maintain refrigerated at 2-8°C for up to 6 months. For long term storage store at -20°C.
Uses:	IHC - Paraffin (1:100 - 1:200), Western blot (1:1000), Flow Cytometry (1:10 - 1:50) (Optimal dilution to be determined by the researcher)
Size:	200 µl

Immunohistochemistry Image:



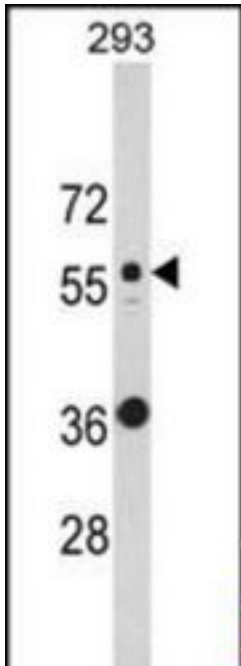
Human Skin: Formalin-Fixed, Paraffin-Embedded (FFPE)

Flow Cytometry Image:



Flow cytometry of 293 cells using KRT10 Antibody (N-term)(bottom histogram) compared to a negative control cell (top histogram). FITC-conjugated goat-anti-rabbit secondary antibodies were used for the analysis.

Western Blot Image:



Western blot of KRT10 Antibody (N-term) in 293 cell line lysates (35 ug/lane). KRT10 (arrow) was detected using the purified Pab.

Requested From:

Japan

Laboratory Reagent For In Vitro Research Use Only

Not for resale without prior written consent from LifeSpan BioSciences, Inc.

Created on 9/23/2014

© 2014 LifeSpan BioSciences