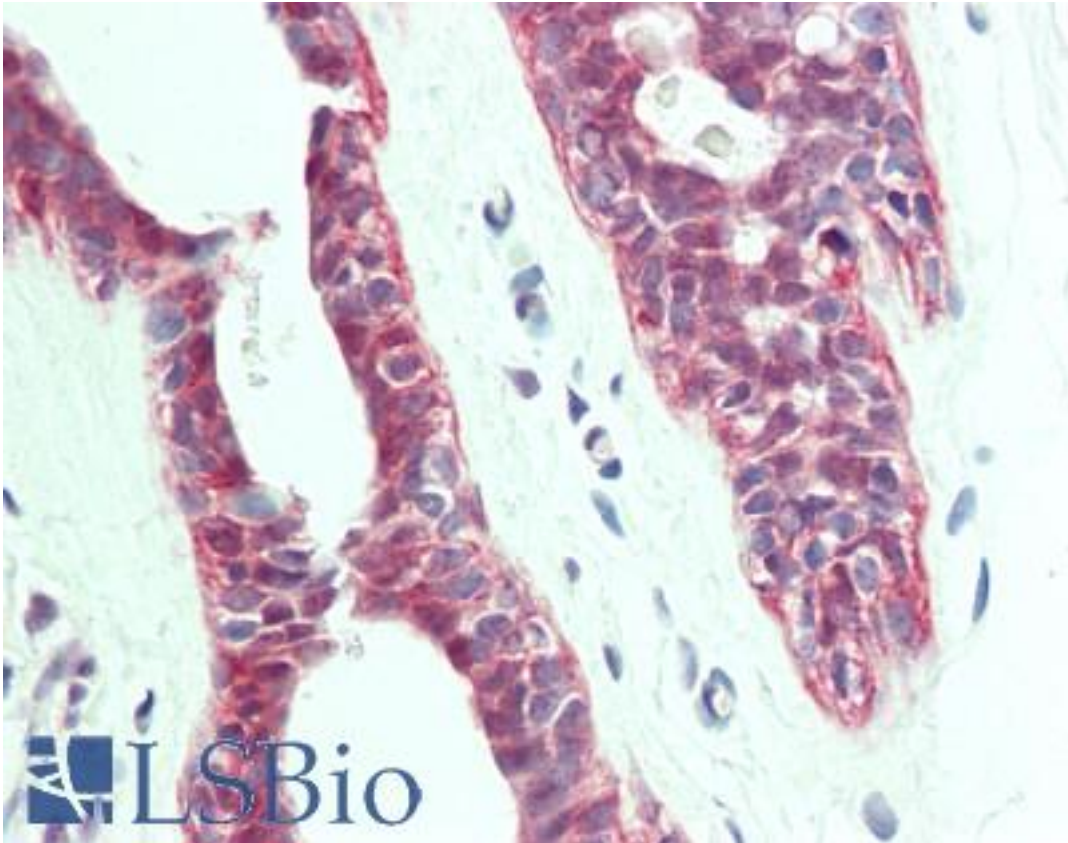


PTPLA Rabbit anti-Human Polyclonal (aa36-66) Antibody - LS-B10947 - LSBio

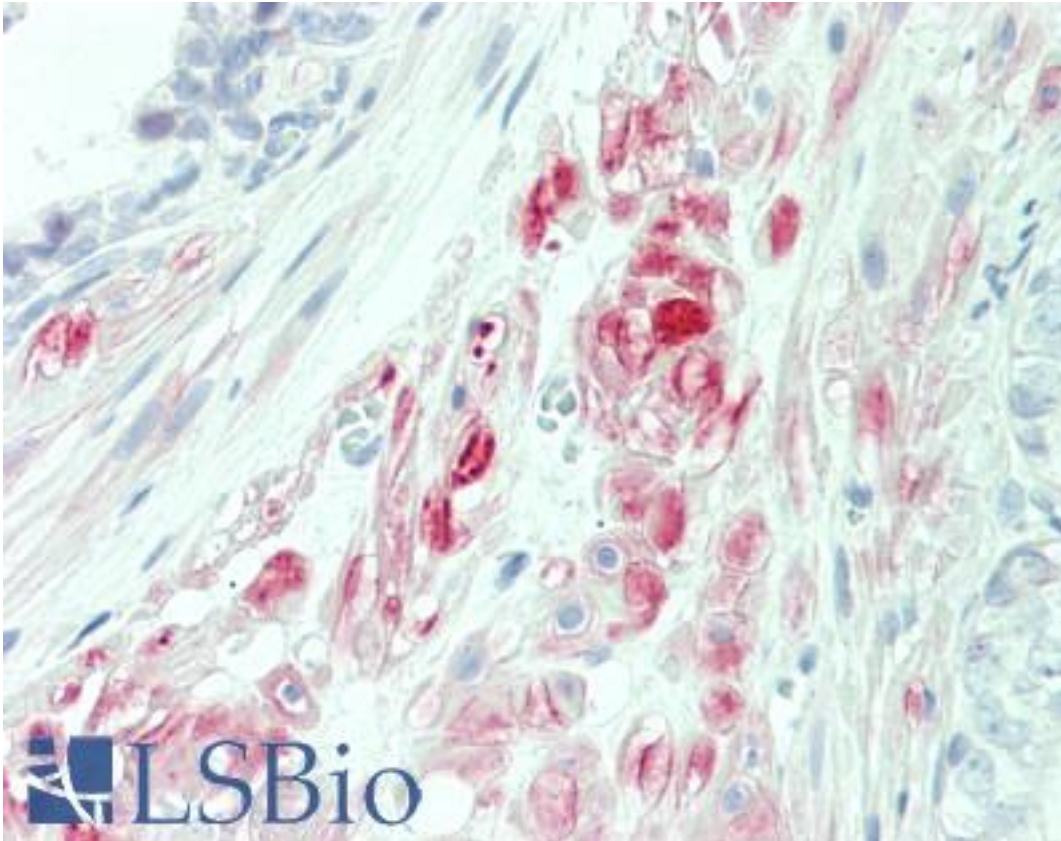
CatalogID:	LS-B10947
Validation:	This antibody replaces catalog number LS-C162297. It has been validated for use in the following assays: IHC-P.
Target:	protein tyrosine phosphatase-like (proline instead of catalytic arginine), member A (PTPLA)
Synonyms:	PTPLA Antibody, CAP Antibody, Cementum attachment protein Antibody, HACD1 Antibody
Family / Subfamily:	Protein Phosphatase / PTP-like
Host	PTPLA antibody was produced in Rabbit
Clonality:	Polyclonal
Immunogen Species:	PTPLA antibody was raised against Human
Antigen Type:	Synthetic peptide
Immunogen:	PTPLA antibody was raised against kLH-conjugated synthetic peptide from N-terminal region of human PTPLA.
Specificity:	Human PTPLA
Epitope:	aa36-66
Reactivity:	Human
Purification:	Immunoaffinity purified
Presentation:	PBS, 0.09% sodium azide
Recommended Storage:	Maintain refrigerated at 2-8°C for up to 6 months. For long term storage store at -20°C.
Uses:	IHC - Paraffin (1:100), Western blot (1:1000) (Optimal dilution to be determined by the researcher)
Size:	200 µl

Immunohistochemistry Image:



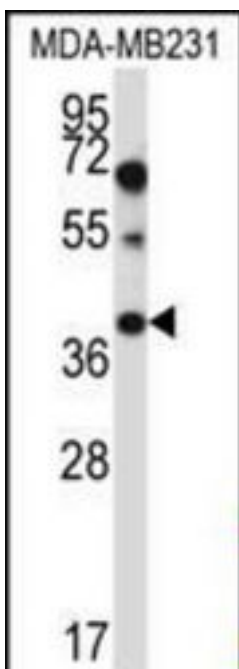
Human Breast: Formalin-Fixed, Paraffin-Embedded (FFPE)

Immunohistochemistry Image:



Human Prostate: Formalin-Fixed, Paraffin-Embedded (FFPE)

Western Blot Image:



PTPLA Antibody (N-term) Western blot of MDA-MB231 cell line lysates (35 ug/lane). This demonstrates the PTPLA antibody detected the PTPLA protein (arrow).

Requested From:	Japan
Laboratory Reagent For In Vitro Research Use Only	
Not for resale without prior written consent from LifeSpan BioSciences, Inc.	
Created on 9/23/2014	
© 2014 LifeSpan BioSciences	