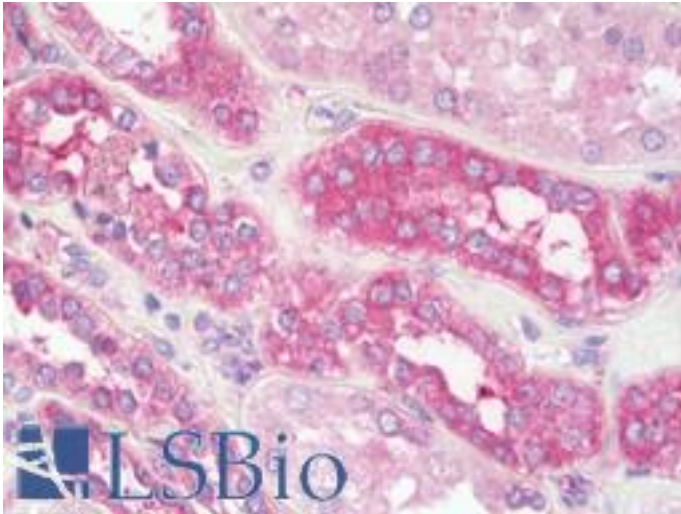


EEA1 Rabbit Polyclonal Antibody - LS-B10942 - LSBio

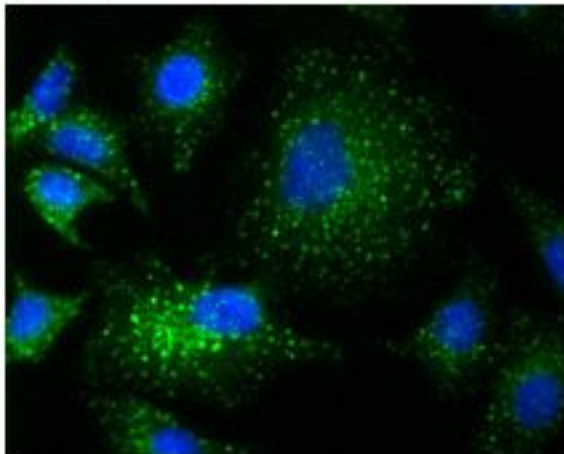
CatalogID:	LS-B10942
Validation:	This antibody replaces catalog number LS-C179925. It has been validated for use in the following assays: IHC-P.
Target:	early endosome antigen 1 (EEA1)
Synonyms:	EEA1 Antibody, MST105 Antibody, MSTP105 Antibody, ZFYVE2 Antibody, Early endosome antigen 1 Antibody
Host	EEA1 antibody was produced in Rabbit
Clonality:	Polyclonal
Antigen Type:	Synthetic peptide
Immunogen:	EEA1 antibody was raised against n-terminal EEA1 synthetic peptide.
Specificity:	EEA1
Reactivity:	Human, Mouse, Rat
Purification:	Protein A purified
Presentation:	PBS, pH 7.2, 50% glycerol
Recommended Storage:	Store at -20°C.
Usage Summary:	IP: 2 ul/300 ul of cell extract from 1x10E7 cells;
Uses:	IHC - Paraffin (1:100), ICC (1:200), Western blot (1:1000), Immunoprecipitation (Optimal dilution to be determined by the researcher)
Size:	50 µl

Immunohistochemistry Image:



Immunocytochemistry Image:

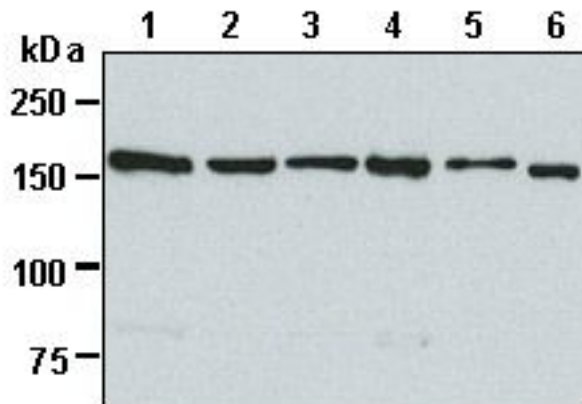
A549



Green: anti-EEA1
Blue: DAPI counter stain

Western Blot Image:

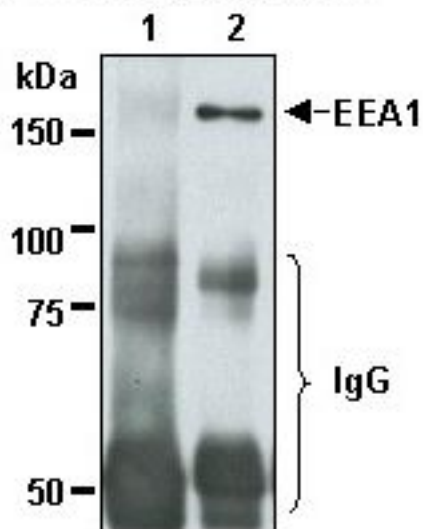
■ Western blotting



Lane 1: HeLa Lane 4: NIH/3T3
Lane 2: 293T Lane 5: MEF
Lane 3: A549 Lane 6: NRK

Immunoprecipitation Image:

■ Immunoprecipitation



Lane 1: HeLa+ normal rabbit IgG
Lane 2: HeLa+ anti-EEA1

Requested From:

Japan

Laboratory Reagent For In Vitro Research Use Only

Not for resale without prior written consent from LifeSpan BioSciences, Inc.

Created on 9/23/2014

© 2014 LifeSpan BioSciences