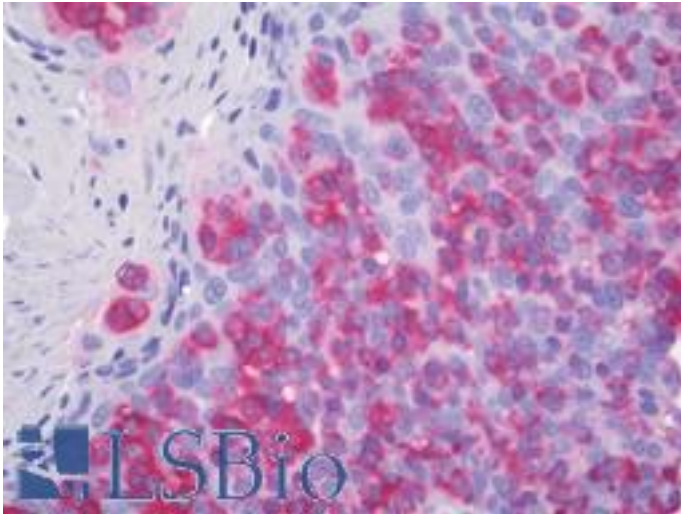


ACTBL2 Rabbit anti-Human Polyclonal Antibody - LS-B10935 - LSBio

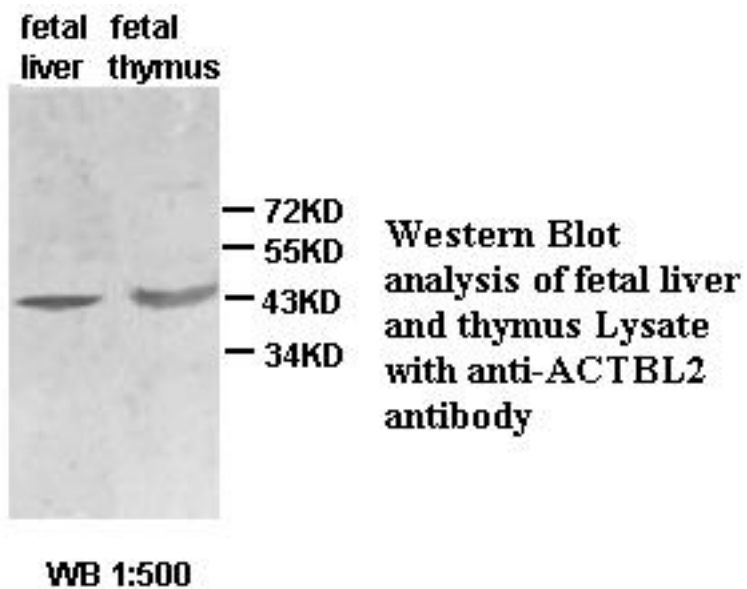
CatalogID:	LS-B10935
Validation:	This antibody replaces catalog number LS-C137295. It has been validated for use in the following assays: IHC-P.
Target:	actin, beta-like 2 (ACTBL2)
Synonyms:	ACTBL2 Antibody, Actin, beta-like 2 Antibody, Actin-like protein Antibody, Beta-actin-like protein 2 Antibody, Kappa-actin Antibody
Host	ACTBL2 antibody was produced in Rabbit
Clonality:	Polyclonal
Immunogen Species:	ACTBL2 antibody was raised against Human
Reactivity:	Human
Purification:	Affinity purified
Presentation:	PBS, pH 7.4, 0.02% sodium azide
Recommended Storage:	Store at -20°C for up to one year.
Uses:	IHC - Paraffin (1:100), Western blot (1:500 - 1:1000), ELISA (1:10000 - 1:80000) (Optimal dilution to be determined by the researcher)
Size:	50 µl

Immunohistochemistry Image:



Human Tonsil: Formalin-Fixed, Paraffin-Embedded (FFPE)

Western Blot Image:



Requested From:

Japan

Laboratory Reagent For In Vitro Research Use Only

Not for resale without prior written consent from LifeSpan BioSciences, Inc.

Created on 9/23/2014

© 2014 LifeSpan BioSciences