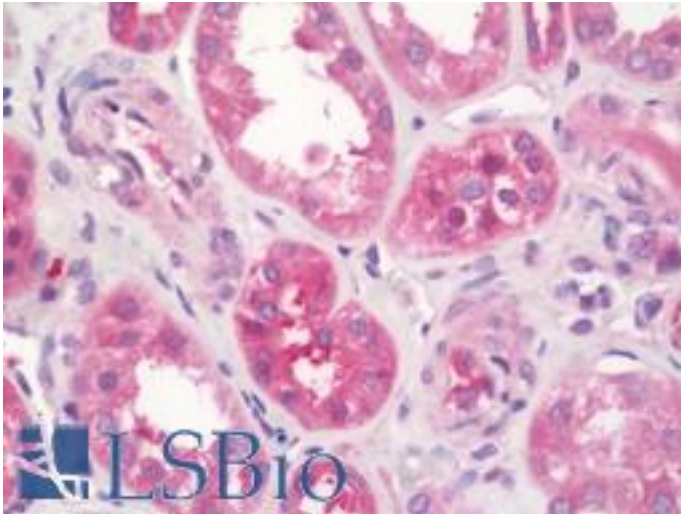


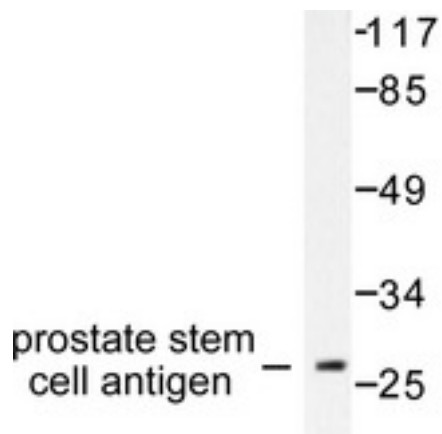
PSCA Rabbit anti-Human Polyclonal (aa41-90) Antibody - LS-B10930 - LSBio	
CatalogID:	LS-B10930
Validation:	This antibody replaces catalog number LS-C176188. It has been validated for use in the following assays: IHC-P.
Target:	prostate stem cell antigen (PSCA)
Synonyms:	PSCA Antibody, Prostate stem cell antigen Antibody, PRO232 Antibody
Host	PSCA antibody was produced in Rabbit
Clonality:	Polyclonal
Immunogen Species:	PSCA antibody was raised against Human
Antigen Type:	Synthetic peptide
Immunogen:	PSCA antibody was raised against synthetic peptide, corresponding to amino acids 41-90 of Human PSCA.
Specificity:	Human PSCA
Epitope:	aa41-90
Reactivity:	Human, Mouse
Purification:	Immunoaffinity purified
Presentation:	PBS, pH 7.2, 0.05% sodium azide
Recommended Storage:	Store at 4°C short term. Aliquot and store at -20°C long term. Avoid freeze-thaw cycles.
Uses:	IHC - Paraffin (10 µg/ml), Western blot (1:500 - 1:1000) (Optimal dilution to be determined by the researcher)
Size:	50 µl
Concentration:	1 mg/ml

Immunohistochemistry Image:



Human Kidney: Formalin-Fixed, Paraffin-Embedded (FFPE)

Western Blot Image:



Western blot of Prostate Stem Cell Antigen (V71) pAb in extracts from HepG2 cells.

Requested From:

Japan

Laboratory Reagent For In Vitro Research Use Only

Not for resale without prior written consent from LifeSpan BioSciences, Inc.

Created on 9/23/2014

© 2014 LifeSpan BioSciences