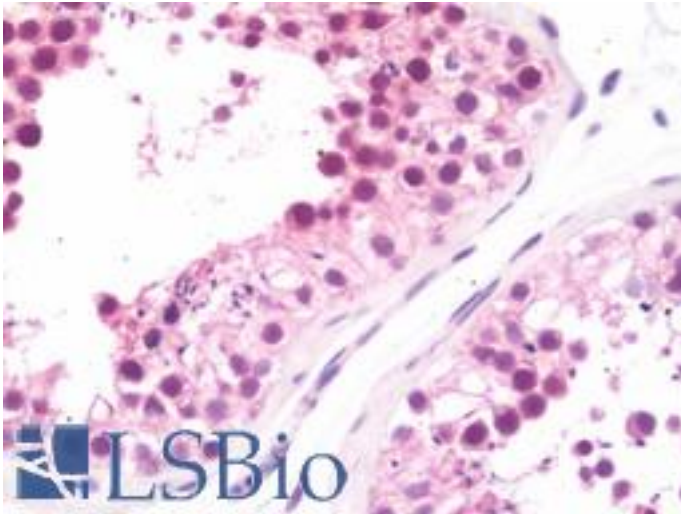


NEK7 Rabbit anti-Human Polyclonal (aa1-30) Antibody - LS-B10926 - LSBio

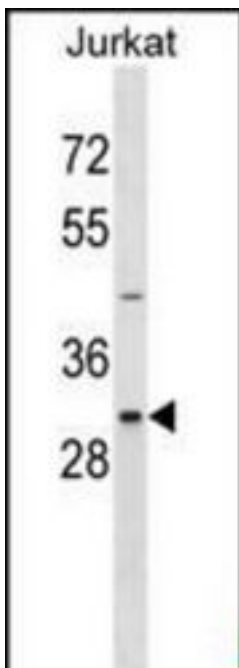
CatalogID:	LS-B10926
Validation:	This antibody replaces catalog number LS-C101170. It has been validated for use in the following assays: IHC-P.
Target:	NIMA-related kinase 7 (NEK7)
Synonyms:	NEK7 Antibody, NimA-related protein kinase 7 Antibody, NIMA-related kinase 7 Antibody
Family / Subfamily:	Protein Kinase / NEK
Host	NEK7 antibody was produced in Rabbit
Clonality:	Polyclonal
Immunogen Species:	NEK7 antibody was raised against Human
Antigen Type:	Synthetic peptide
Immunogen:	NEK7 antibody was raised against kLH conjugated synthetic peptide selected from the N-terminal region of human NEK7.
Epitope:	aa1-30
Reactivity:	Human
Purification:	Ammonium sulfate precipitation
Presentation:	PBS, 0.09% sodium azide
Recommended Storage:	Maintain refrigerated at 2-8°C for up to 6 months. For long term storage store at -20°C.
Uses:	IHC - Paraffin (1:50), Western blot (1:1000) (Optimal dilution to be determined by the researcher)
Size:	200 µl

Immunohistochemistry Image:



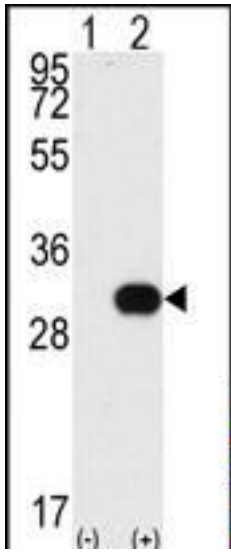
Human Testis: Formalin-Fixed, Paraffin-Embedded (FFPE)

Western Blot Image:



NEK7 Antibody (M8) Western blot of Jurkat cell line lysates (35 ug/lane). This demonstrates the NEK7 antibody detected the NEK7 protein (arrow).

Western Blot Image:



Western blot of NEK7 (arrow) using NEK7 Antibody (N-term). 293 cell lysates (2 ug/lane) either nontransfected (Lane 1) or transiently transfected with the NEK7 gene (Lane 2).

Requested From:

Japan

Laboratory Reagent For In Vitro Research Use Only

Not for resale without prior written consent from LifeSpan BioSciences, Inc.

Created on 9/23/2014

© 2014 LifeSpan BioSciences