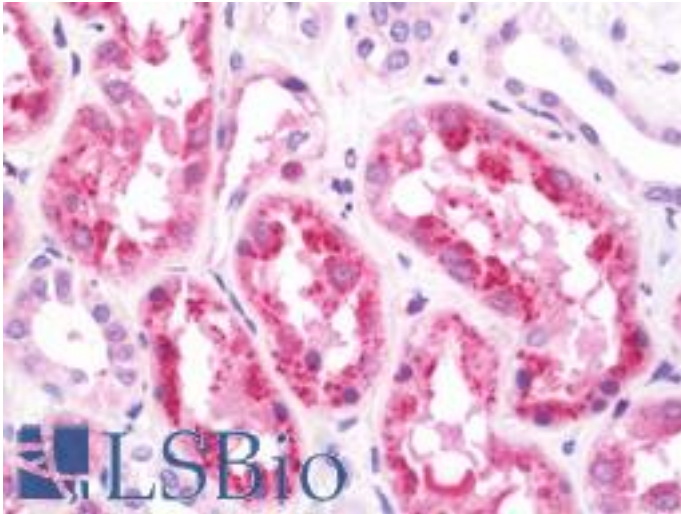


HOPX / HOP Rabbit anti-Human Polyclonal (aa39-67) Antibody - LS-B10925 - LSBio

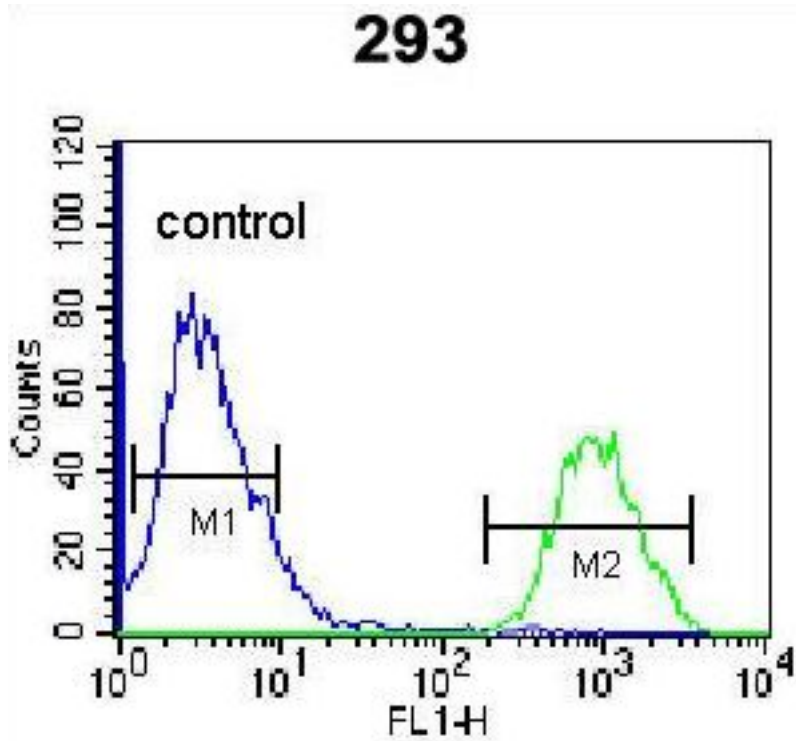
CatalogID:	LS-B10925
Validation:	This antibody replaces catalog number LS-C164971. It has been validated for use in the following assays: IHC-P.
Target:	HOP homeobox (HOPX)
Synonyms:	HOPX Antibody, CAMEO Antibody, HOD Antibody, Homeodomain-only protein Antibody, HOP Antibody, HOP homeobox Antibody, LAGY Antibody, NECC1 Antibody, Odd homeobox protein 1 Antibody, OB1 Antibody, TOTO Antibody, Odd homeobox 1 protein Antibody, SMAP31 Antibody
Host	HOPX antibody was produced in Rabbit
Clonality:	Polyclonal
Immunogen Species:	HOPX / HOP antibody was raised against Human
Antigen Type:	Synthetic peptide
Immunogen:	HOPX / HOP antibody was raised against kLH-conjugated synthetic peptide from C-terminal region of human HOPX.
Specificity:	Human HOPX / HOP
Epitope:	aa39-67
Reactivity:	Human
Purification:	Immunoaffinity purified
Presentation:	PBS, 0.09% sodium azide
Recommended Storage:	Maintain refrigerated at 2-8°C for up to 6 months. For long term storage store at -20°C.
Uses:	IHC - Paraffin (1:100), Western blot (1:1000), Flow Cytometry (1:10 - 1:50) (Optimal dilution to be determined by the researcher)
Size:	200 µl

Immunohistochemistry Image:



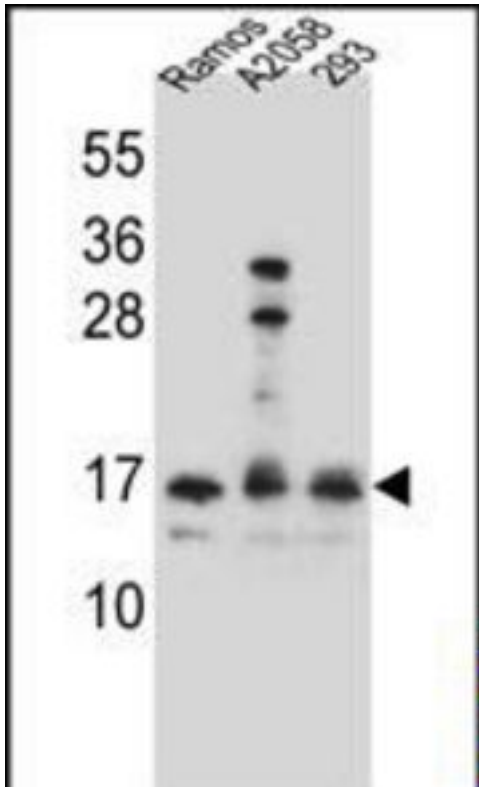
Human Kidney: Formalin-Fixed, Paraffin-Embedded (FFPE)

Flow Cytometry Image:



HOPX Antibody (C-term) flow cytometry of 293 cells (right histogram) compared to a negative control cell (left histogram). FITC-conjugated goat-anti-rabbit secondary antibodies were used for the analysis.

Western Blot Image:



HOPX Antibody (C-term) Western blot of Ramos,A2058,293 cell line lysates (35 ug/lane). This demonstrates the HOPX antibody detected the HOPX protein (arrow).

Requested From:

Japan

Laboratory Reagent For In Vitro Research Use Only

Not for resale without prior written consent from LifeSpan BioSciences, Inc.

Created on 9/23/2014

© 2014 LifeSpan BioSciences