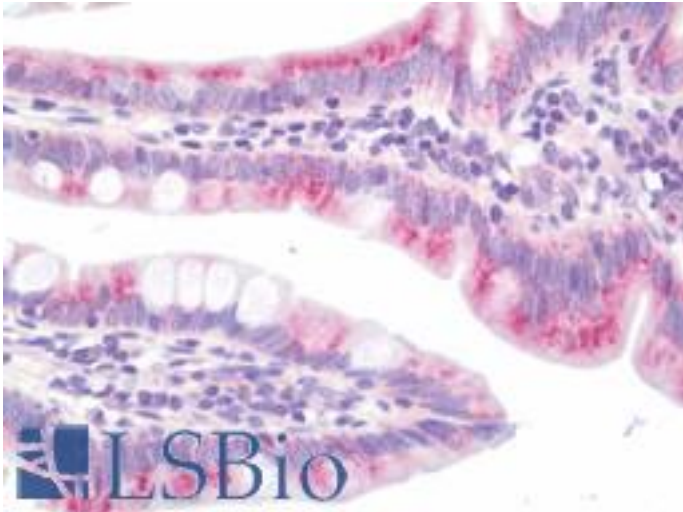


**DAB1 Rabbit anti-Human Polyclonal (aa201-250) Antibody - LS-B10921 - LSBio**

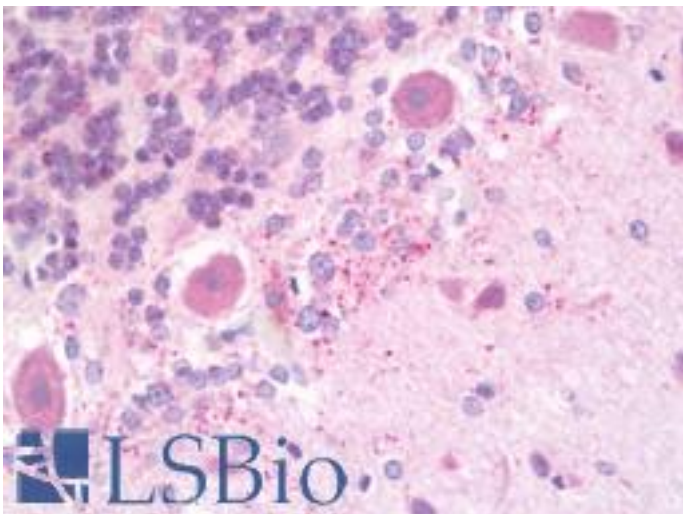
<b>CatalogID:</b>	LS-B10921
<b>Validation:</b>	This antibody replaces catalog number LS-C177690. It has been validated for use in the following assays: IHC-P.
<b>Target:</b>	Dab, reelin signal transducer, homolog 1 (Drosophila) (DAB1)
<b>Synonyms:</b>	DAB1 Antibody, Disabled homolog 1 Antibody
<b>Host</b>	DAB1 antibody was produced in Rabbit
<b>Clonality:</b>	Polyclonal
<b>Immunogen Species:</b>	DAB1 antibody was raised against Human
<b>Antigen Type:</b>	Synthetic peptide
<b>Immunogen:</b>	DAB1 antibody was raised against synthetic peptide around Gln226 of human DAB1
<b>Specificity:</b>	Human DAB1
<b>Epitope:</b>	aa201-250
<b>Reactivity:</b>	Human, Mouse, Rat
<b>Purification:</b>	Immunoaffinity purified
<b>Presentation:</b>	PBS, pH 7.2, 0.05% sodium azide
<b>Recommended Storage:</b>	Store at 4°C short term. Aliquot and store at -20°C long term. Avoid freeze-thaw cycles.
<b>Uses:</b>	IHC - Paraffin (10 µg/ml), Immunofluorescence (1:50 - 1:200), Western blot (1:500 - 1:1000) (Optimal dilution to be determined by the researcher)
<b>Size:</b>	50 µl
<b>Concentration:</b>	1 mg/ml

**Immunohistochemistry Image:**



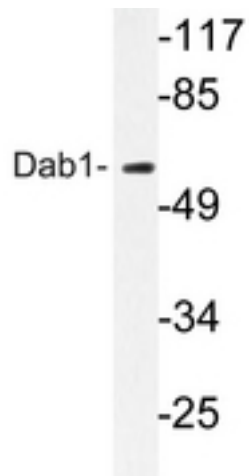
Human Small Intestine: Formalin-Fixed, Paraffin-Embedded (FFPE)

**Immunohistochemistry Image:**



Human Brain, Cerebellum: Formalin-Fixed, Paraffin-Embedded (FFPE)

**Western Blot Image:**



Western blot analysis of DAB1 pAb in HepG2 cell lysate.

**Requested From:**

Japan

Laboratory Reagent For In Vitro Research Use Only

Not for resale without prior written consent from LifeSpan BioSciences, Inc.

Created on 9/23/2014

© 2014 LifeSpan BioSciences