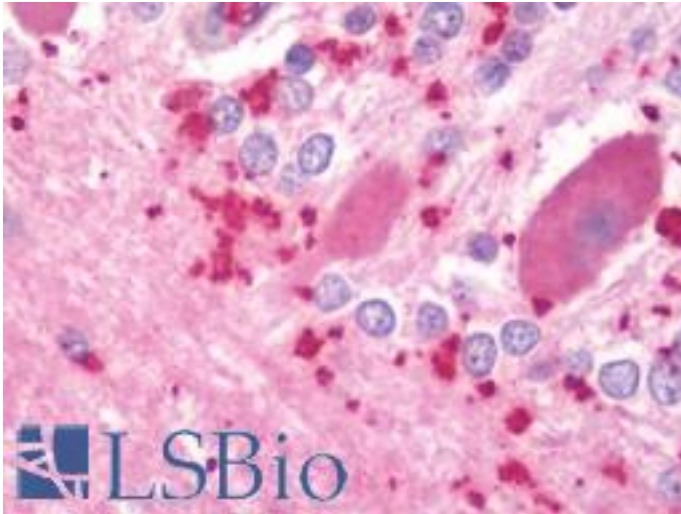


PPP3CA / CCN1 / Calcineurin A Rabbit anti-Human Polyclonal (aa364-283) Antibody - LS-B10919 - LSBio	
<b>CatalogID:</b>	LS-B10919
<b>Validation:</b>	This antibody replaces catalog number LS-C209575. It has been validated for use in the following assays: IHC-P.
<b>Target:</b>	protein phosphatase 3, catalytic subunit, alpha isozyme (PPP3CA)
<b>Synonyms:</b>	PPP3CA Antibody, Calcineurin A Antibody, CALN Antibody, CALNA Antibody, CALNA1 Antibody, CNA1 Antibody, PPP2B Antibody, Calcineurin A alpha Antibody, CAM-PRP catalytic subunit Antibody, CCN1 Antibody, CNA Antibody, CNA alpha Antibody, pp2b-alpha Antibody
<b>Family / Subfamily:</b>	Protein Phosphatase / PP2B
<b>Host</b>	PPP3CA antibody was produced in Rabbit
<b>Clonality:</b>	Polyclonal
<b>Immunogen Species:</b>	PPP3CA / CCN1 / Calcineurin A antibody was raised against Human
<b>Immunogen:</b>	PPP3CA / CCN1 / Calcineurin A antibody was raised against human Calcineurin A peptide (AA 264-283).
<b>Specificity:</b>	Identifies a band at ~61kD on a WB.
<b>Epitope:</b>	aa364-283
<b>Reactivity:</b>	Human, Mouse, Rat, Dog, Rabbit
<b>Purification:</b>	Immunoaffinity purified
<b>Presentation:</b>	PBS, pH 7.4; 50% glycerol, 0.09% sodium azide.
<b>Recommended Storage:</b>	Store at -20°C.
<b>Uses:</b>	IHC - Paraffin (5 µg/ml), Western blot (1:1000), Immunoprecipitation (Optimal dilution to be determined by the researcher)
<b>Size:</b>	50 µg
<b>Concentration:</b>	1 mg/ml

**Immunohistochemistry Image:**



Human Brain, Cerebellum: Formalin-Fixed, Paraffin-Embedded (FFPE)

**Requested From:**

Japan

Laboratory Reagent For In Vitro Research Use Only

Not for resale without prior written consent from LifeSpan BioSciences, Inc.

Created on 9/23/2014

© 2014 LifeSpan BioSciences