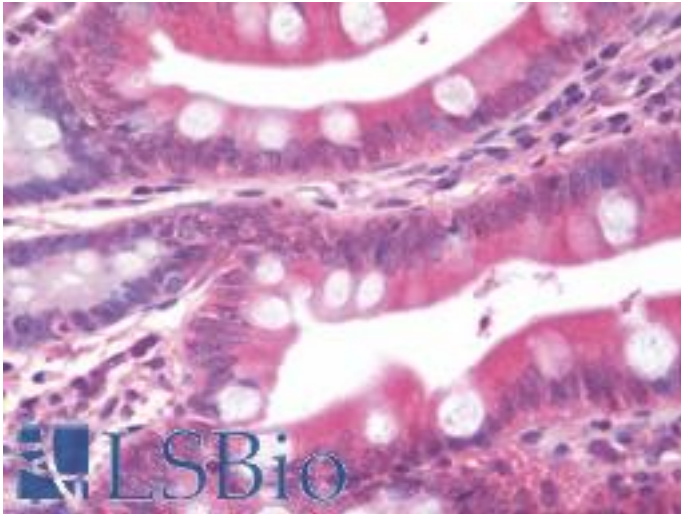


WC1 / ATP7B Mouse anti-Human Monoclonal (aa3-21) (S62-29) Antibody - LS-B10916 - LSBio	
CatalogID:	LS-B10916
Validation:	This antibody replaces catalog number LS-C209504. It has been validated for use in the following assays: IHC-P.
Target:	ATPase, Cu ⁺⁺ transporting, beta polypeptide (ATP7B)
Synonyms:	ATP7B Antibody, Copper-transporting ATPase 2 Antibody, WC1 Antibody, Wilson disease Antibody, PWD Antibody, WD Antibody, Copper pump 2 Antibody, WND Antibody
Family / Subfamily:	Transporter / ATPase - P type, type IB
Host	ATP7B antibody was produced in Mouse
Clonality:	Monoclonal
Isotype:	IgG1
Clone Name:	S62-29
Immunogen Species:	WC1 / ATP7B antibody was raised against Human
Antigen Type:	Synthetic peptide
Immunogen:	WC1 / ATP7B antibody was raised against synthetic peptide amino acids 3-21 (cytoplasmic N-terminus) of human Copper-transporting ATPase2.
Specificity:	Detects ~160kD in rat brain membrane preparations.
Epitope:	aa3-21
Reactivity:	Human, Mouse, Rat
Purification:	Protein G purified
Presentation:	PBS, pH 7.4, 0.09% sodium azide, 50% glycerol.
Recommended Storage:	Store at -20°C.
Uses:	IHC - Paraffin (10 µg/ml), Western blot, Immunoprecipitation (Optimal dilution to be determined by the researcher)
Size:	50 µg
Concentration:	1 mg/ml

Immunohistochemistry Image:



Human Small Intestine: Formalin-Fixed, Paraffin-Embedded (FFPE)

Requested From:

Japan

Laboratory Reagent For In Vitro Research Use Only

Not for resale without prior written consent from LifeSpan BioSciences, Inc.

Created on 9/23/2014

© 2014 LifeSpan BioSciences