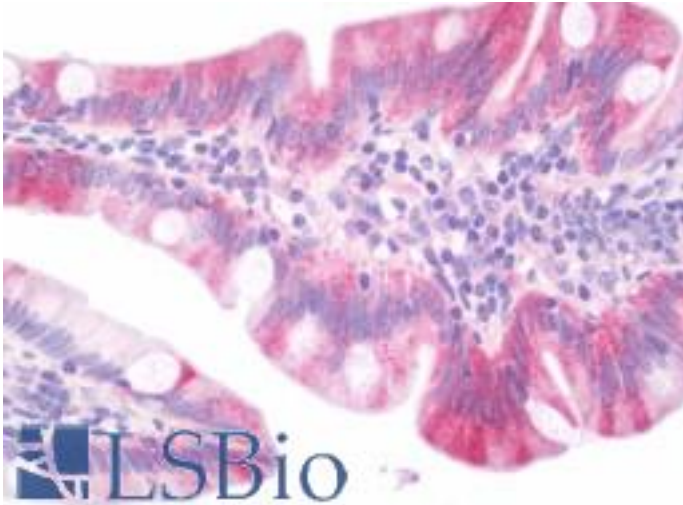


DAB1 Rabbit anti-Human Polyclonal (aa191-240) Antibody - LS-B10915 - LSBio

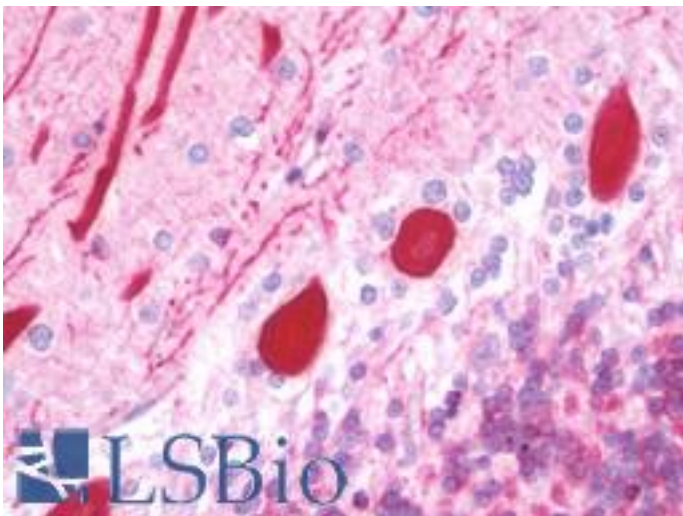
CatalogID:	LS-B10915
Validation:	This antibody replaces catalog number LS-C177689. It has been validated for use in the following assays: IHC-P.
Target:	Dab, reelin signal transducer, homolog 1 (Drosophila) (DAB1)
Synonyms:	DAB1 Antibody, Disabled homolog 1 Antibody
Host	DAB1 antibody was produced in Rabbit
Clonality:	Polyclonal
Immunogen Species:	DAB1 antibody was raised against Human
Antigen Type:	Synthetic peptide
Immunogen:	DAB1 antibody was raised against synthetic peptide around Glu214 of human DAB1
Specificity:	Human DAB1
Epitope:	aa191-240
Reactivity:	Human, Mouse, Rat
Purification:	Immunoaffinity purified
Presentation:	PBS, pH 7.2, 0.05% sodium azide
Recommended Storage:	Store at 4°C short term. Aliquot and store at -20°C long term. Avoid freeze-thaw cycles.
Uses:	IHC - Paraffin (10 µg/ml), Immunofluorescence (1:50 - 1:200), Western blot (1:500 - 1:1000) (Optimal dilution to be determined by the researcher)
Size:	50 µl
Concentration:	1 mg/ml

Immunohistochemistry Image:



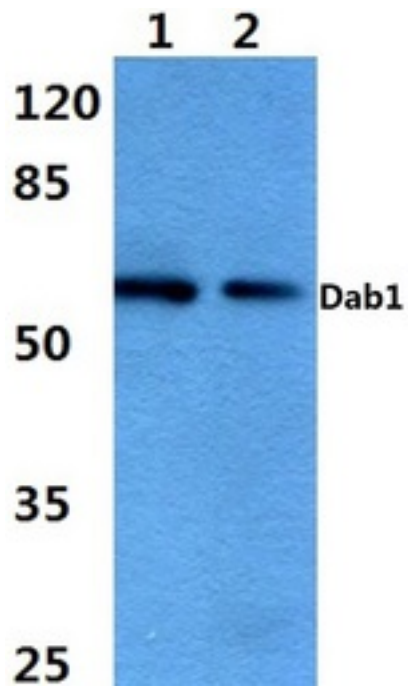
Human Small Intestine: Formalin-Fixed, Paraffin-Embedded (FFPE)

Immunohistochemistry Image:



Human Brain, Cerebellum: Formalin-Fixed, Paraffin-Embedded (FFPE)

Western Blot Image:



Western blot analysis of DAB1 pAb at a dilution of 1:500. Lane 1: HeLa cell lysate. Lane 2: H9C2 cell lysate.

Requested From:

Japan

Laboratory Reagent For In Vitro Research Use Only

Not for resale without prior written consent from LifeSpan BioSciences, Inc.

Created on 9/23/2014

© 2014 LifeSpan BioSciences