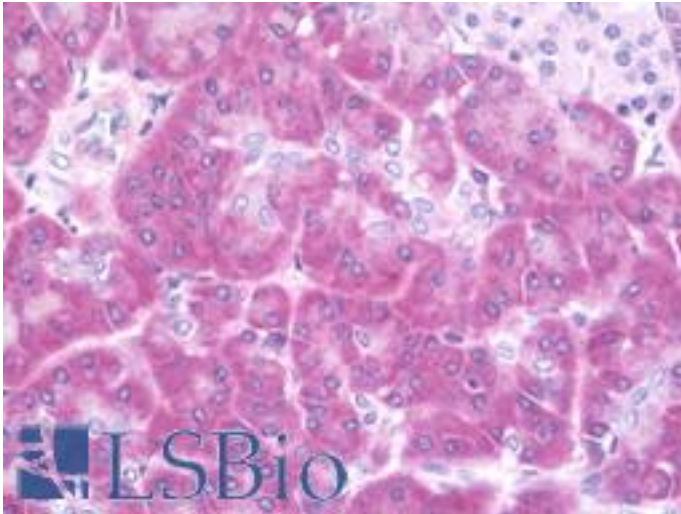


GNRH Rabbit anti-Human Polyclonal (aa11-60) Antibody - LS-B10909 - LSBio	
CatalogID:	LS-B10909
Validation:	This antibody replaces catalog number LS-C177250. It has been validated for use in the following assays: IHC-P.
Target:	gonadotropin-releasing hormone 1 (luteinizing-releasing hormone) (GNRH1)
Synonyms:	GNRH1 Antibody, Gonadoliberin Antibody, LHRH Antibody, LNRH Antibody, GnRH-associated peptide 1 Antibody, Progonadoliberin-1 Antibody, Progonadoliberin I Antibody, Luliberin I Antibody, GNRH Antibody, GRH Antibody, HH12 Antibody
Family / Subfamily:	Hormone / not assigned-Hormone
Host	GNRH1 antibody was produced in Rabbit
Clonality:	Polyclonal
Immunogen Species:	GNRH antibody was raised against Human
Antigen Type:	Synthetic peptide
Immunogen:	GNRH antibody was raised against synthetic peptide around Asp43 of human GNRH
Specificity:	Human GNRH
Epitope:	aa11-60
Reactivity:	Human
Purification:	Immunoaffinity purified
Presentation:	PBS, pH 7.2, 0.05% sodium azide
Recommended Storage:	Store at 4°C short term. Aliquot and store at -20°C long term. Avoid freeze-thaw cycles.
Uses:	IHC - Paraffin (15 µg/ml) (Optimal dilution to be determined by the researcher)
Size:	50 µl
Concentration:	1 mg/ml

Immunohistochemistry Image:



Human Pancreas: Formalin-Fixed, Paraffin-Embedded (FFPE)

Requested From:

Japan

Laboratory Reagent For In Vitro Research Use Only

Not for resale without prior written consent from LifeSpan BioSciences, Inc.

Created on 9/23/2014

© 2014 LifeSpan BioSciences